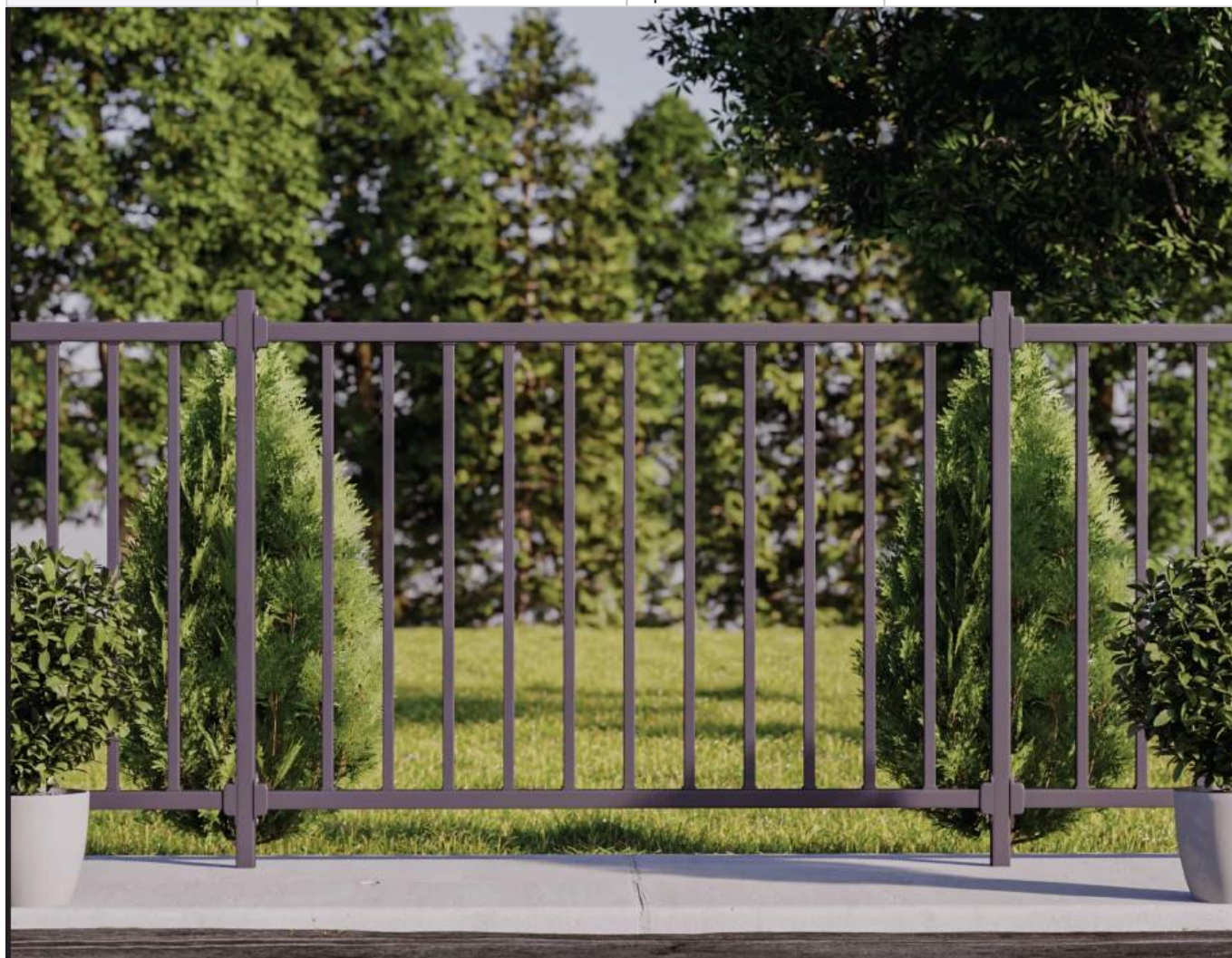
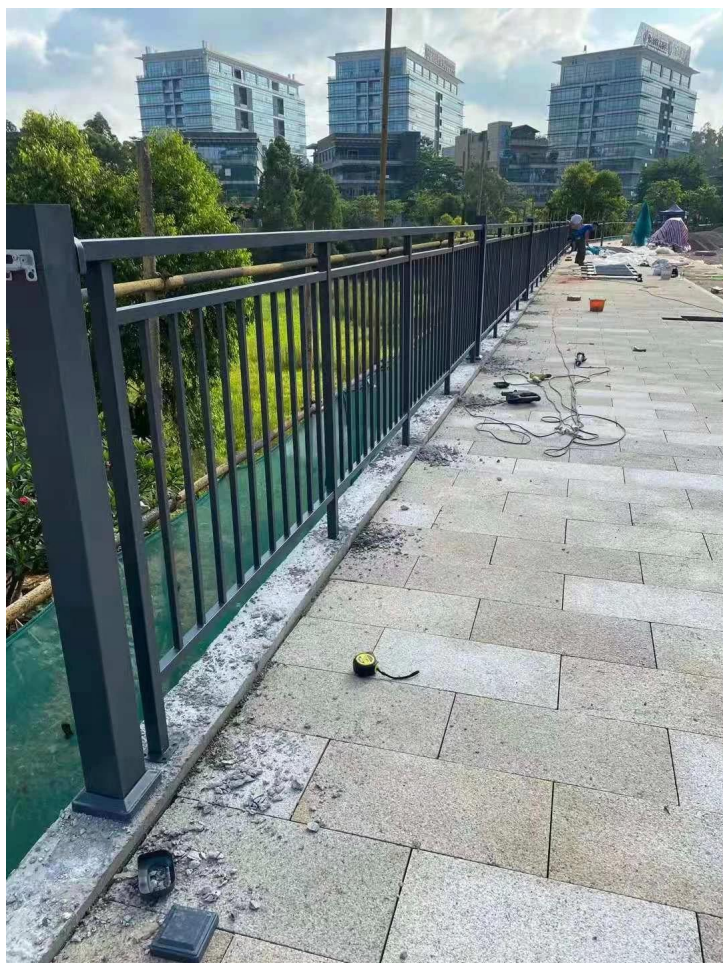


Hot-Dip Galvanizado Forjado Balcón Balcón Cerca de Seguridad Seguridad Balcón Balcón Balografía

nombre del producto	Barandilla de acero galvanizado	Tamaño regular	H 1.1 m * w 1.2 m
Límite alto	2 m	Espesor del tubo	1.2-2.5 mm
Lote de inicio	20 m o 20□	Lugar de producto	Provincia de Guangdong, China
Material	Acero	Método de cálculo de precio unitario	Altura por debajo de 1,2 m en metros, altura superior a 1,2 m en cuadrado.
Artesanía	ensamblado y soldado	Tratamiento de superficies	Polvo recubierto







Montaje:



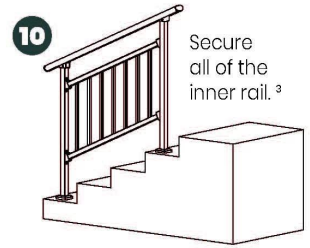
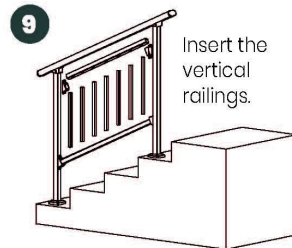
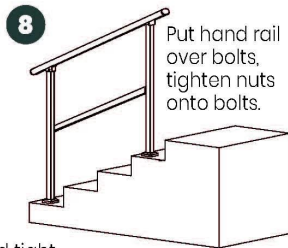
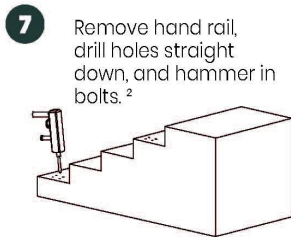
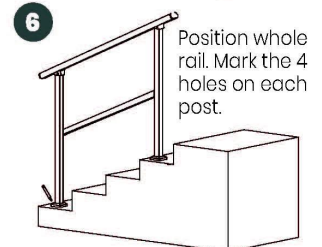
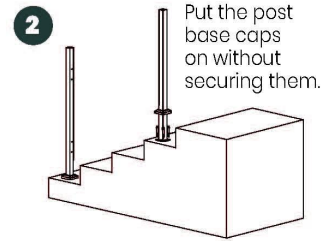
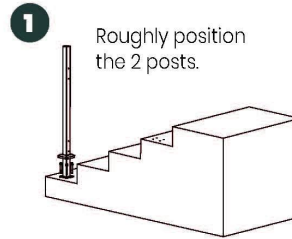
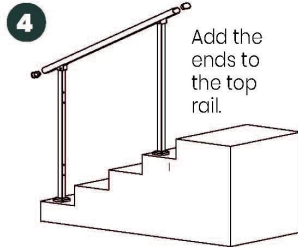
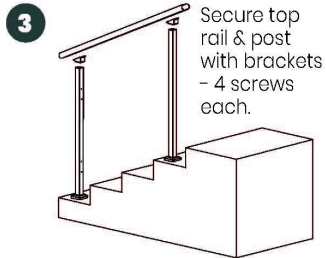


Guías de instalación:

Guard Rail Assembly Instructions

Tools Required: Electrical Power Drill
(Impact Drill Preferred)

Overview: Assemble the rail and position it before marking holes for drilling. Improper installation can lead to failure of rail system or injury.



² Double check posts are parallel and tight against inside rail before marking holes for drilling.

¹ Inside rail will be loose until each post is secured to the ground.

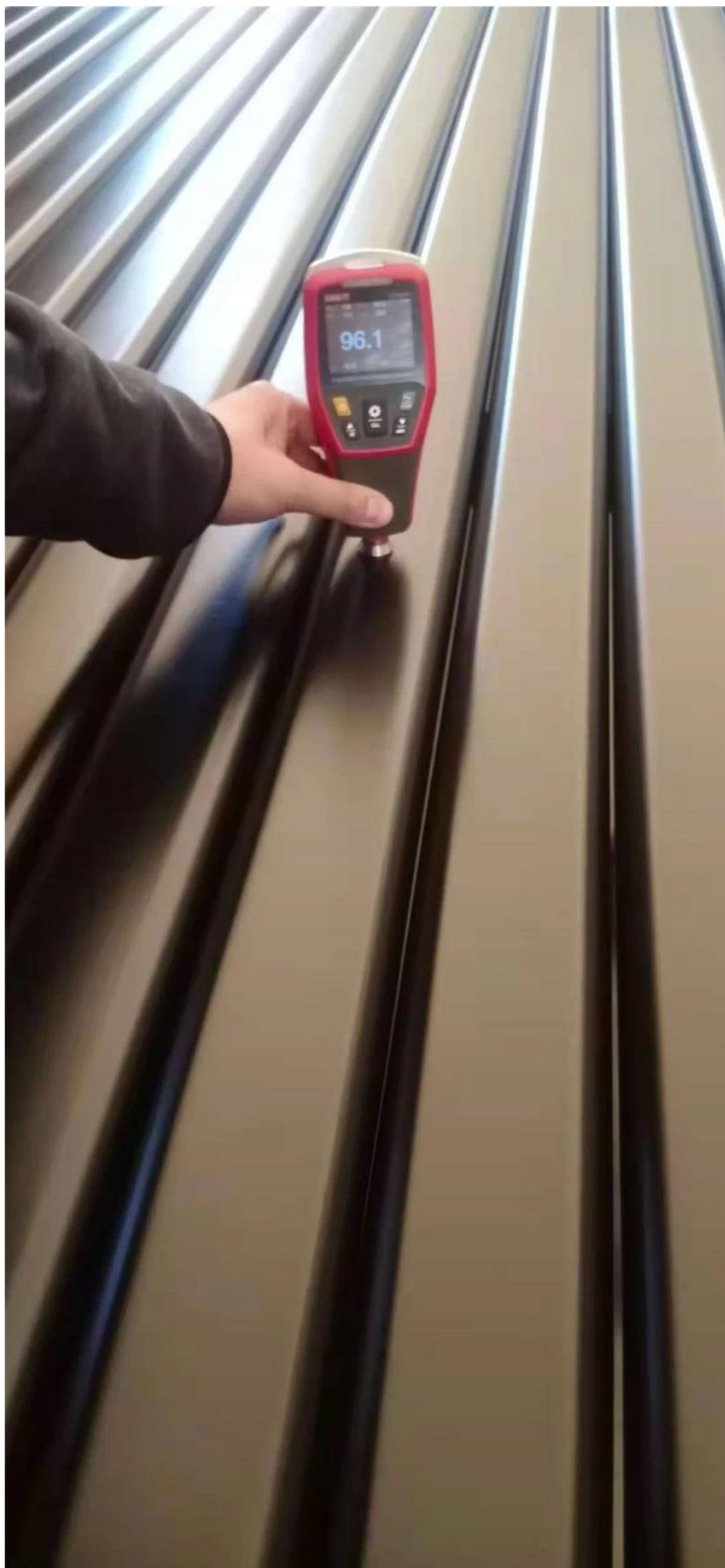
³ Push and pull top rail & inside rail to ensure all is secure.

Producción Y embalaje de escalera a ceras para manos en nuestro taller:



KEBIL®

SHENZHEN LAUNCH CO., LTD







Por favor sentir gratis para contactarnos para más detalles:

Contacto: víspera

Correo electrónico:sales03@launch-china.cn

Hp / whatsapp:+8613686807796