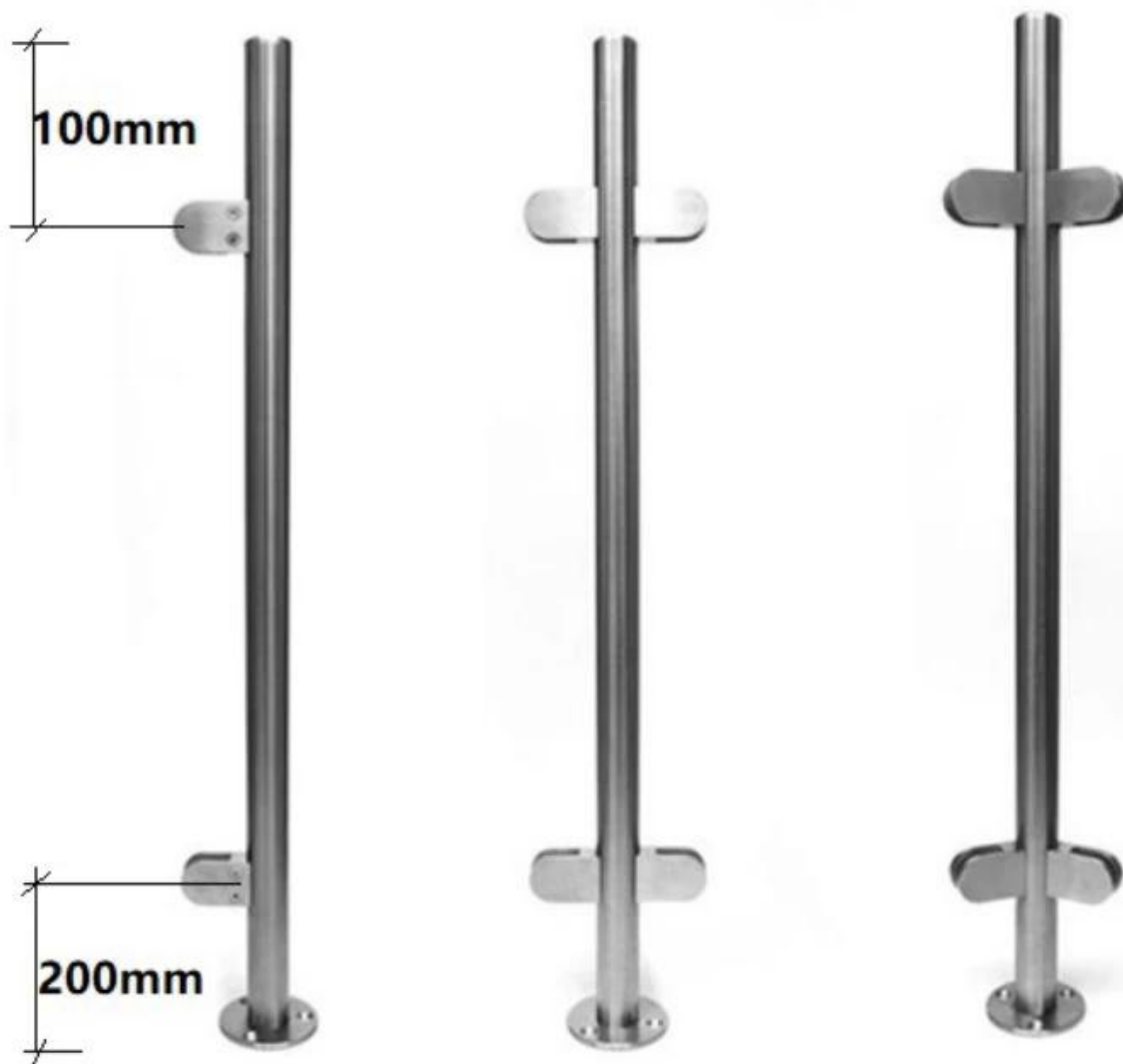


Especificaciones de Product.

| | |
|---------------------------|--|
| Productonombre | Inoxidableacero vasobalaustradaenviar |
| Material | 304SS / 316SS / 316LSS |
| Acabado de superficie | Espejo pulido, satinado cepillado, negro mate, efecto madera |
| Poste redondo y pasamanos | Diámetro 42,4 / 50,8 mm x 1,5 mm de espesor de pared |
| Vasogrosor | 10/12 mm |
| Solicitud | Escalera barandilla, balcón barandilla, cubierta barandilla para oficina edificio, villa, supermercado, etc. |

Base Montado Redondo Vidrio de acero inoxidable Balaustrada Publicación:

KEBIL 科比奥®





1-way post



2-way 180° post



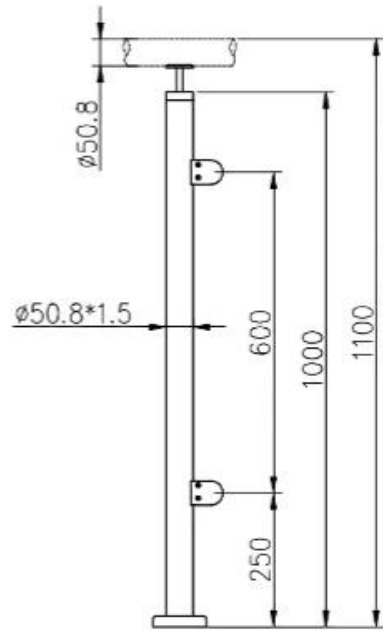
2-way 90° post

Efecto madera

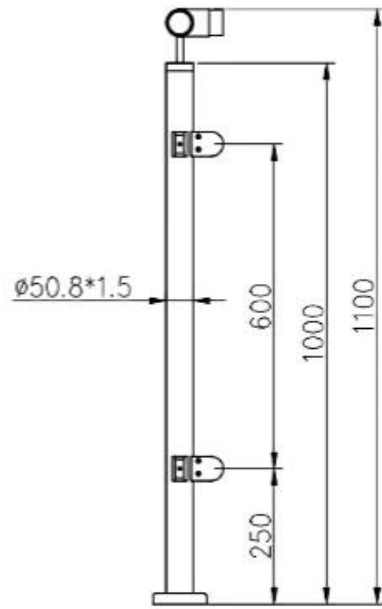


Enviardibujoparareferencia:

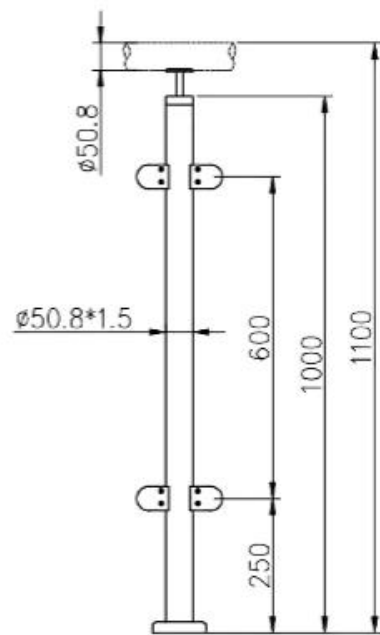
KEBIL 科比奥®



KEBIL 科比奥®



KEBIL 科比奥®



1). BaseMontado Diseño de barandilla de vidrio de poste redondo y pasamanos:

KEBIL 科比奥®



2). Poste redondo de montaje lateral y diseño de barandilla de vidrio para pasamanos:

KEBIL 科比奥®



Instalación

Glass Clamp Installation Guide



Mark and centre punch desired location of blind rivet nut location.



Drill centre punched hole in tube to suit blind rivet nut.



Insert blind rivet nut into tube and fasten with blind rivet tool.



Check installed blind rivet nut is secure and ready for install.



Align half glass clamp with blind rivet nut inline position. Screw in button head cap screw into thread and tighten with hex key.



Select appropriate rubber gasket to suit glass panel thickness. Install rubber gasket into both sides of glass clamp. (Note rubber gasket marked with sizes).



If heavier clamping load is required please use supplied glass clamp pin, during the install process. Note glass panels will require drilling in order to fit glass clamp pins.



Fit glass panel into position, install second half of glass clamp secure with provided hex screws.



Tighten glass clamps with hex key, and check glass panel are secure with no movement.





Foto de embalaje

Cada publicación con bolsa de plástico, una caja de cartón. O como requisitos del cliente.

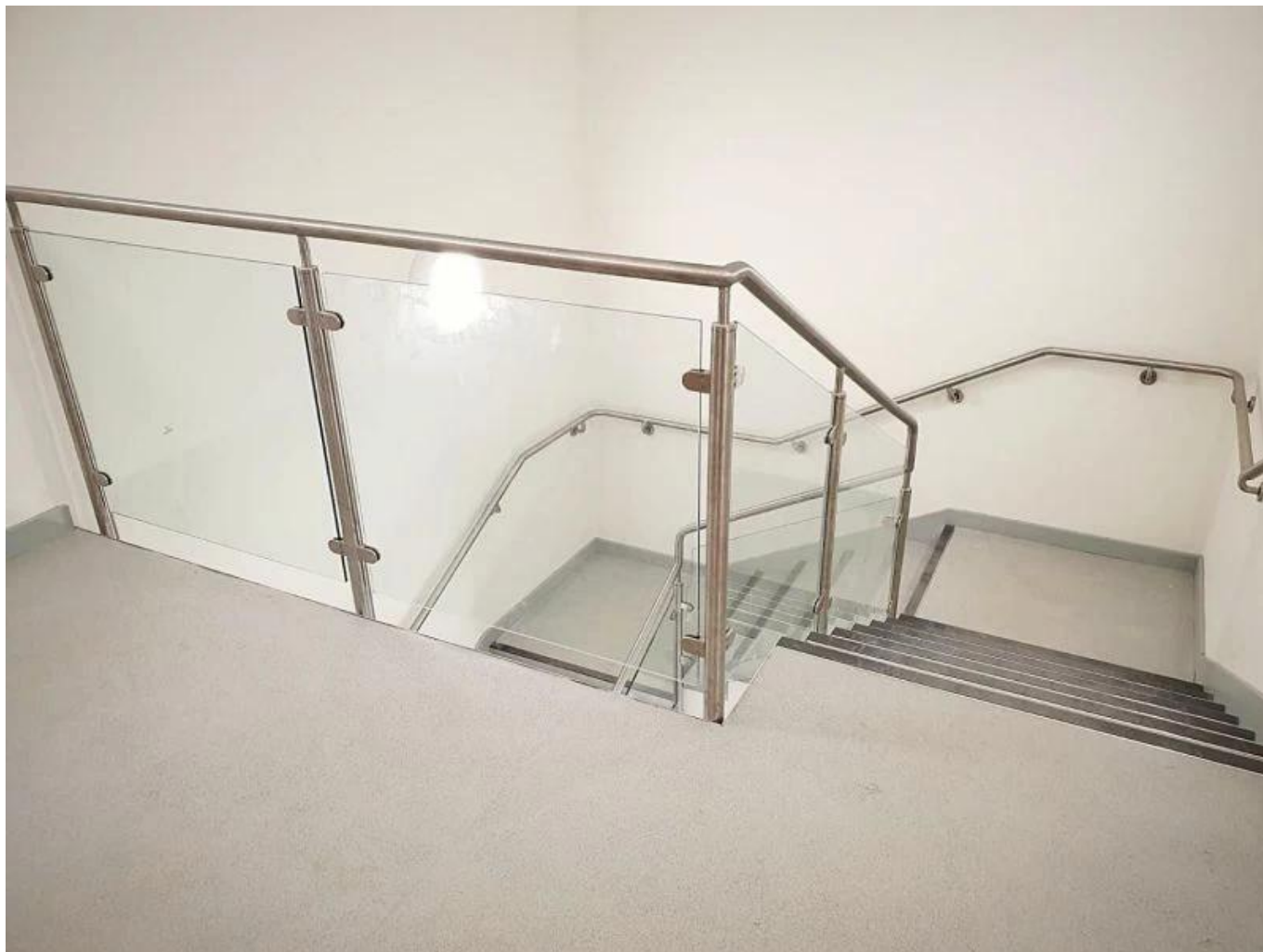




Foto del proyecto







Si tiene algún proyecto que los necesite, no dude en ponerse en contacto conmigo.

Frank Fang

Correo electrónico: sales02@launch-china.cn

Teléfono / WhatsApp / Wechat: +8615906261741