

Jauhepinnoitepuute värit käsin kiskot portaikkoonulkonataisä-käyttää.Kaikki tarvittavat kiinnikkeet / ruuvit toimitetaan.

Teräksen käden kiskot -

Portaiden kädensija keskimäinen kiskot Post Bracket -



Portaat Kaiteet Middle Bar, 32 * 32mm -



Portaat Kaiteet 40 * 40 mm-



Portaat Top HandRail Tube-



Asennuksen jälkeen



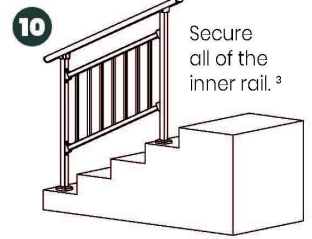
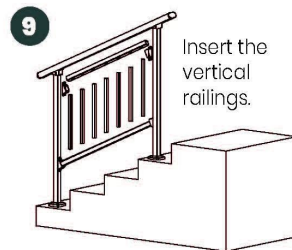
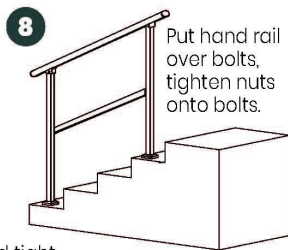
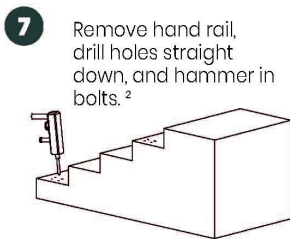
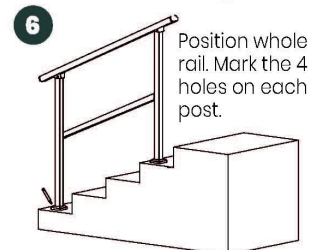
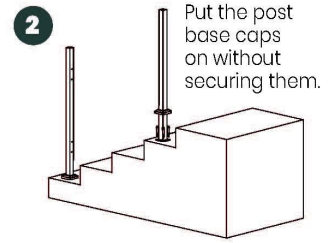
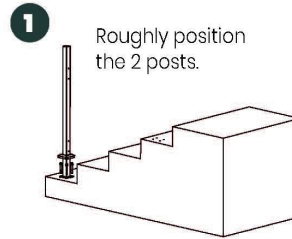
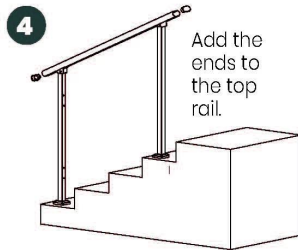
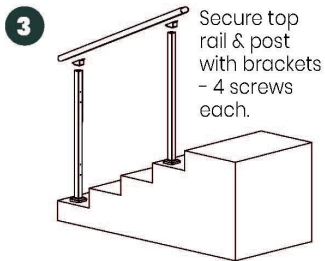


Asennusohjeet-

Guard Rail Assembly Instructions

Tools Required: Electrical Power Drill
(Impact Drill Preferred)

Overview: Assemble the rail and position it before marking holes for drilling. Improper installation can lead to failure of rail system or injury.



² Double check posts are parallel and tight against inside rail before marking holes for drilling.

¹ Inside rail will be loose until each post is secured to the ground.

³ Push and pull top rail & inside rail to ensure all is secure.



