

**Shenzhen Launch Co, Ltd on erikoistunut kehittämään ja valmistukseen korkealaatuisia metallirakennusmateriaaleja, työstökomponentteja ja metallilevyjä tuotteita vuodesta 2004. Olemme luotettavia valmistaja ja toimittaja asiakkaille ympäri maailmaa.**

## WHY CHOOSE US



### 15 YEARS EXPERIENCE

We have been manufacturing railing hardwares since 2004.



### ONE STOP SERVICE

We provide integrated railing solutions. We manufacture. We deliver.



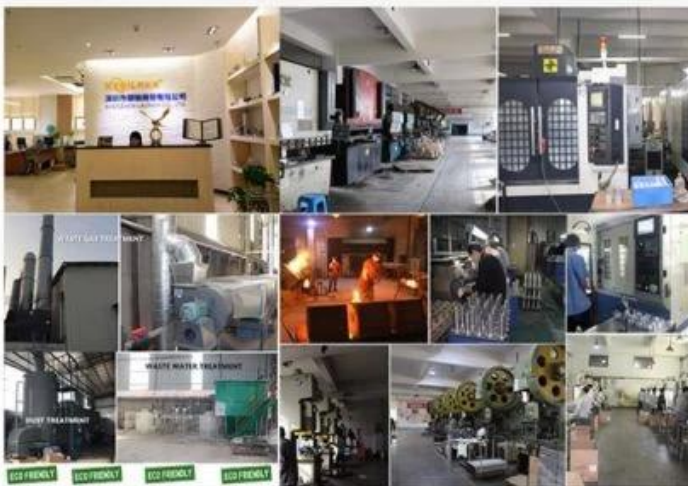
### PROFESSIONAL R&D TEAM

We have engineering experts for developing new products.



### TOP QUALITY & GOOD PRICE

We are strict on quality control as well as cost evaluation.



## ABOUT US

Shenzhen Launch Co., Ltd was established in 2004, located at Nanshan District, Shenzhen, and one hour by car from Hongkong International Airport. Our main products are high-grade building materials including stainless steel balustrade post, staircase handrail, balcony guardrail, swimming pool fence and other high-grade building materials. All the products are designed strictly according to the high-end market requirements. We have our own factory in Tangxia Town, Dongguan, with more than 50 sets of various precision equipments, such as CNC lathe, milling machine, punching machine, pipe cutter, argon welder, drilling machine, polisher, etc. which can provide customers with complete product processing services.

## COMPANY INTRODUCTION

Verification Type: Supplier Assessment Onsite Check

**Country / Region:**  
Guangdong, China ✓

**Year Established:**  
2004 ✓

**Main Products:**  
CNC Machining Parts, Stamping Pa... ✓

**Main Markets:**  
North America, Oceania, Mid East... ✓

**Total Annual Revenue:**  
confidential ✓

**Total Employees:**  
11 - 50 People ✓

Alibaba.com Gold Plus Supplier

Alibaba.com Gold Plus Supplier

**Verified**

Main Product Lines Verification Report

Assessment Report

Presented to

Presented to

**Shenzhen Launch Co., Ltd.**

**Cooperation Company of Shenzhen Launch Co., Ltd.**

深圳市朗驰商贸有限公司

深圳市朗驰商贸有限公司合作工厂

Company Address	B5003, Building 3, Yilida Building, No. 1092 Nanshan Avenue, Dengliang Community, Nanshan Street, Nanshan District, Shenzhen City, Guangdong Province, China
Consigner of Assessment:	Alibaba
Gold Supplier Member ID:	launch168
Gold Supplier Company Name:	Shenzhen Launch Co., Ltd.
Contact Person:	Mr. Binfeng Gao
Phone Number:	0086-13802569770
Fax Number:	0086-755-86372611
Email:	gbf999@china.com
Website Address (URL):	http://launch-china.en.alibaba.com

Gold Supplier & Assessed Company Relationship:	<input type="checkbox"/> Self-owned <input type="checkbox"/> Wholly Owned <input type="checkbox"/> Shareholder/Partner <input type="checkbox"/> Kindred between Owners <input checked="" type="checkbox"/> Cooperation Partner
Company Address	Confidential
City / Country:	Huzhou / China
Consigner of Assessment:	Alibaba & Shenzhen Launch Co., Ltd.
Gold Supplier Member ID:	launch168
Gold Supplier Company Name:	Shenzhen Launch Co., Ltd.
Contact Person:	Confidential
Phone Number:	Confidential
Fax Number:	Confidential
Email:	Confidential
Website Address (URL):	http://launch-china.en.alibaba.com

Service Provided by SGS  
Report No.: 19536352\_P+T

Service Provided by SGS  
Report No.: 19552720\_P



## Tuote

Tuotteen nimi	Square Base Glass Scigot
Malli nro.	Sbm
Materiaali	Marine Grade Duplex 2205
Pinnan viimeistely	Satin harjattu Peili kiillotettu Jauhe päällystetty musta Galvanoitu musta Galvanoitu kultaa
Lasipaksuus	8-13,52mm
Moq	10kpl
Sovellus	Kehyksetön uima-allas lasikaiut Kehyksetön parveke kaide

## Tuotteet Näytä

1, satiini harjattu pinta



**SBM**

2, Mirro kiillotettu pinta



---

**3, jauhemaalattu musta pinta**



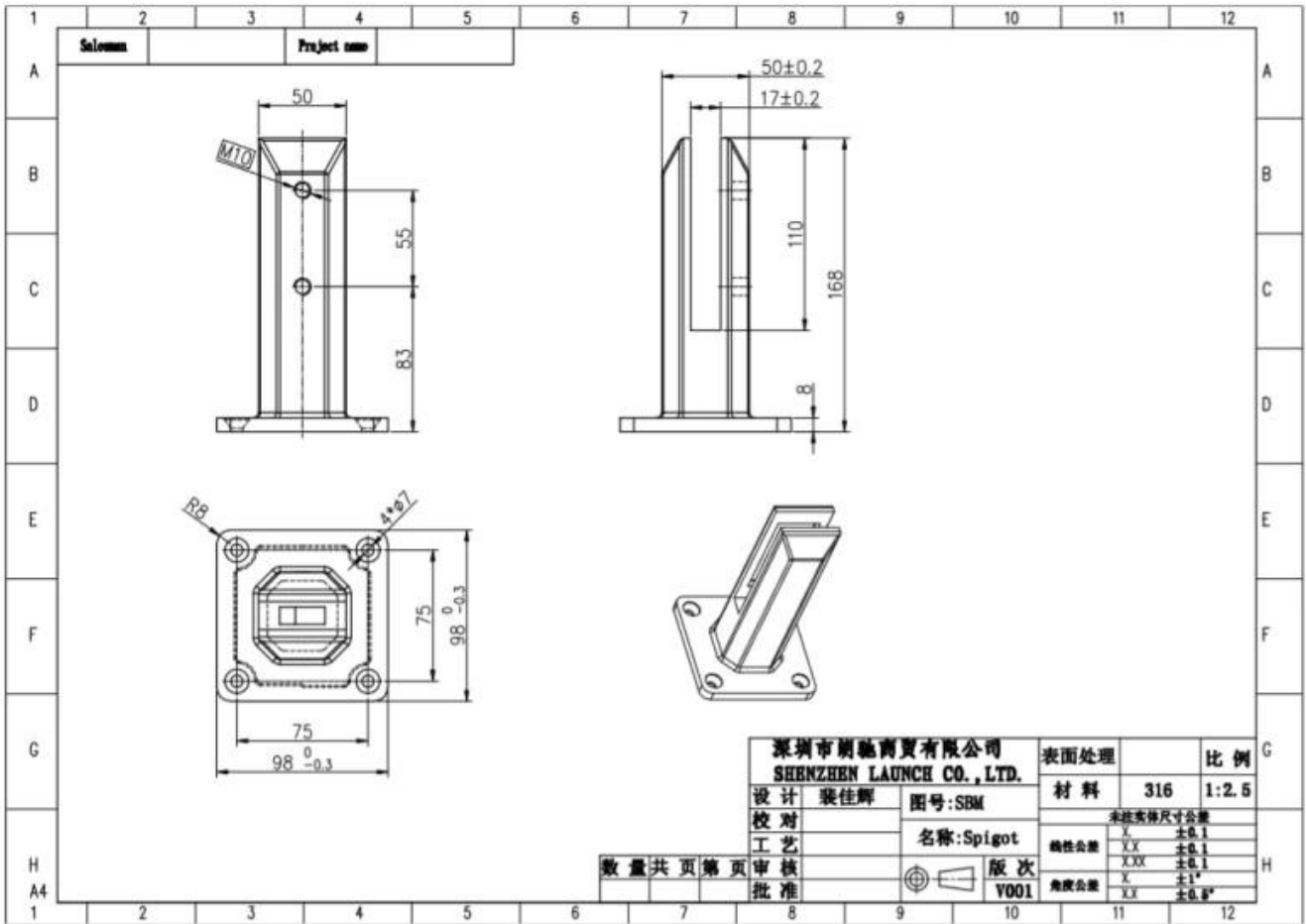
**4, elektrolmoitu musta pinta**



5, galvanoitu kulta pinta



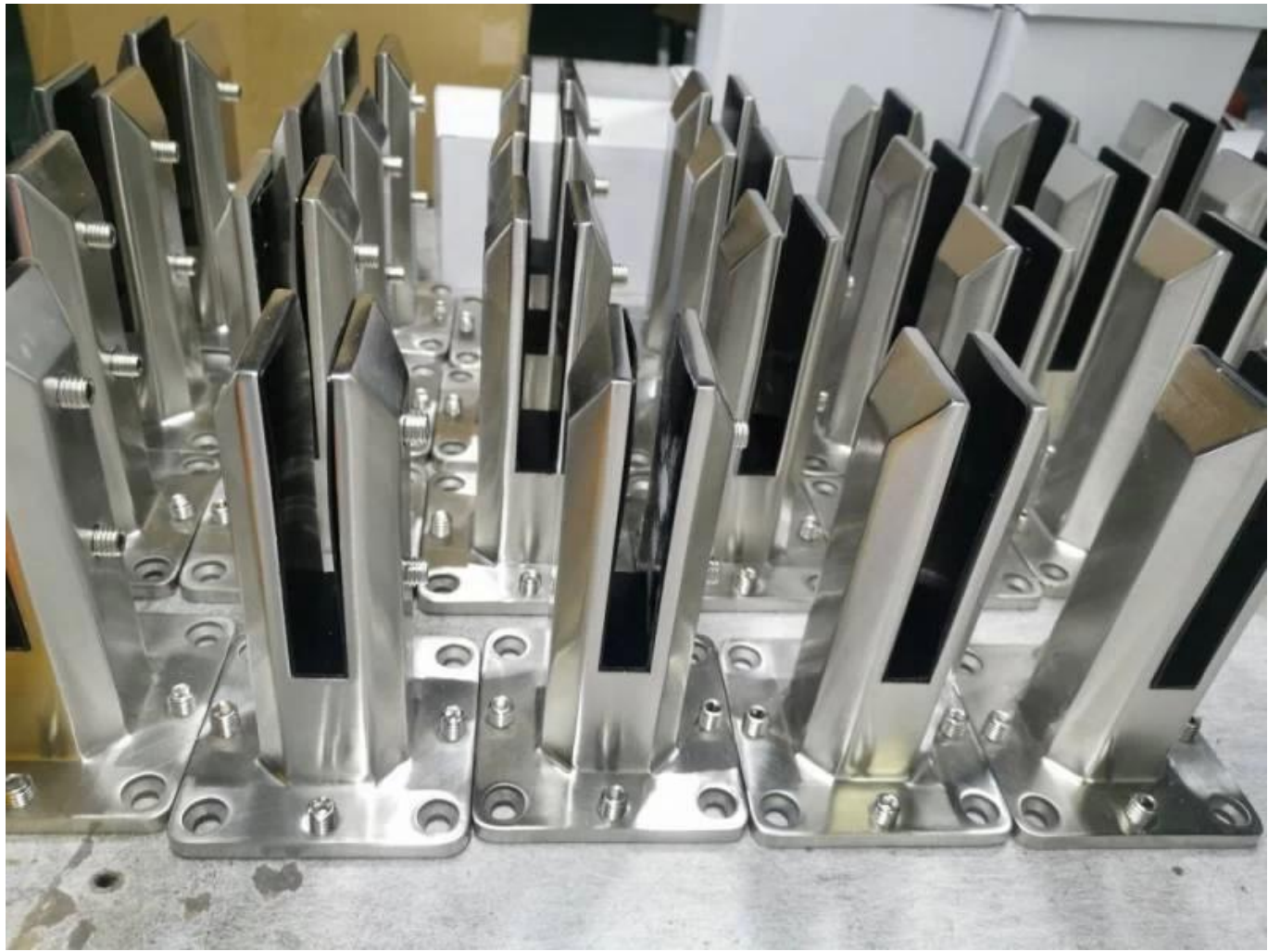
Tekninen piirustus



Massatuotanto ja pakkaus









### Sovelluspiirustukset

Framels Uima-allas aidat











Kehyksetön parveke lasikaiut



Ota rohkeasti yhteyttä, kun sinulla on kysely.

Attn: Frank Fang

Puhelin: +8615906261741

Sähköposti: [sales02@launch-china.cn](mailto:sales02@launch-china.cn)