

ruostumaton teräs hana lasikaide allaskäyttöön

GLASS SPIGOT



Model No. : SBM

Square base plate spigot

Material	Stainless steel 316 , 316L , duplex 2205
Finish	Mirror or satin polished
For glass thickness	10mm – 13.52 mm



Model No. : SCM

Square core drill spigot

Material	Stainless steel 316 , 316L , duplex 2205
Finish	Mirror or satin polished
For glass thickness	10mm – 13.52 mm



Model No. : RBM

Round base plate spigot

Material	Stainless steel 316 , 316L , duplex 2205
Finish	Mirror or satin polished
For glass thickness	10mm – 13.52 mm



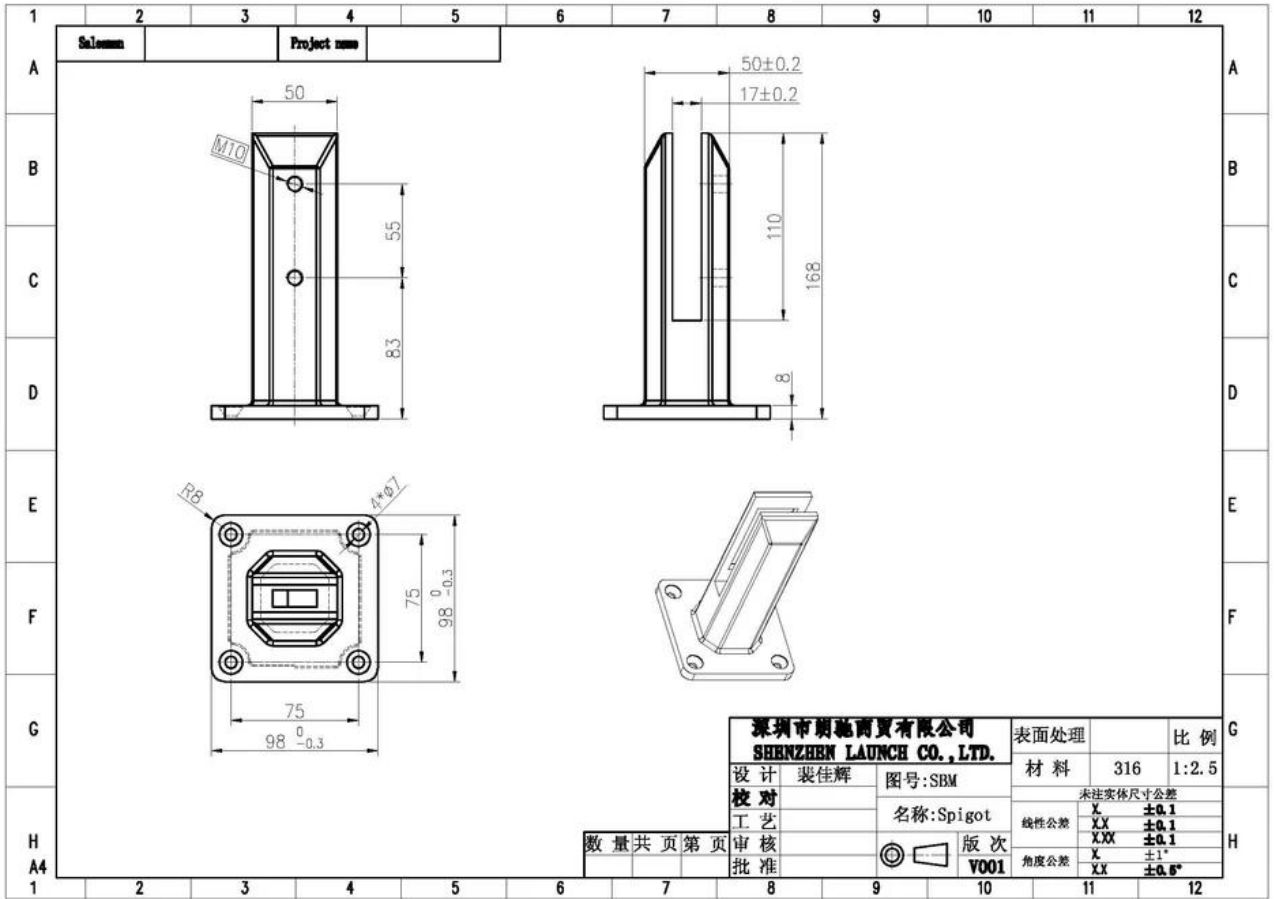
Model No. : RCM

Round core drill spigot

Material	Stainless steel 316 , 316L , duplex 2205
Finish	Mirror or satin polished
For glass thickness	10mm – 13.52 mm



piirustus



pakkaus



asennus valokuva



[Rohkeasti yhteyttä jos olet kiinnostunut.](#)

Email: sales03@launch-china.cn

Skype: [launch_03](#)
