

Poudre enrobage manque de rails de main en acier pour escalier Extérieur ou alors intérieur utiliser. Tous les crochets / vis nécessaires seront fournis.

Accès aux rails de la main en acier-

Staircase Handrail Middle Rail à poster Support -



Barre de milieu de la main courante de l'escalier, 32 \* 32mm -



Poste de handrail d'escalier 40 \* 40mm-



Tubre courante supérieure d'escalier -



Après assemblage-



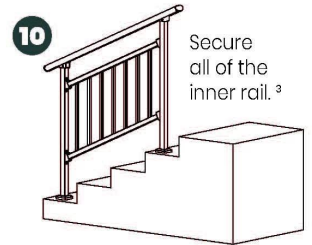
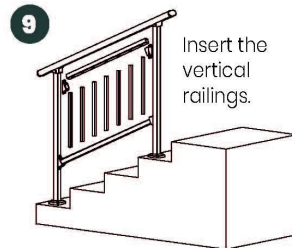
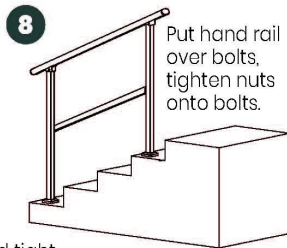
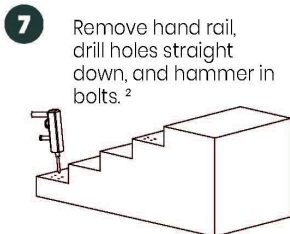
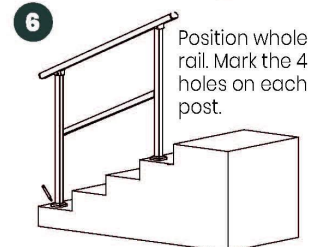
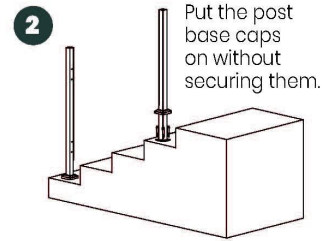
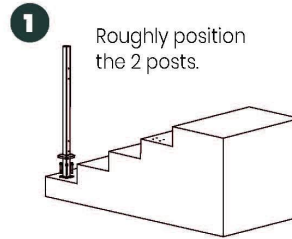
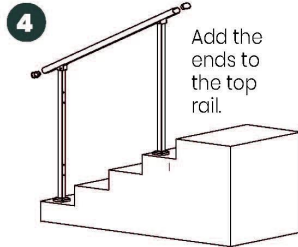
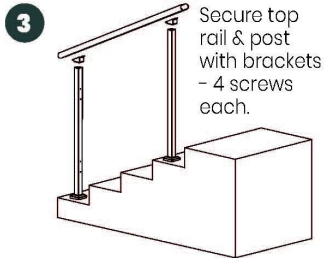


Guides d'installation -

# Guard Rail Assembly Instructions

**Tools Required:** Electrical Power Drill  
(Impact Drill Preferred)

**Overview:** Assemble the rail and position it before marking holes for drilling. Improper installation can lead to failure of rail system or injury.



<sup>2</sup> Double check posts are parallel and tight against inside rail before marking holes for drilling.

<sup>1</sup> Inside rail will be loose until each post is secured to the ground.

<sup>3</sup> Push and pull top rail & inside rail to ensure all is secure.



