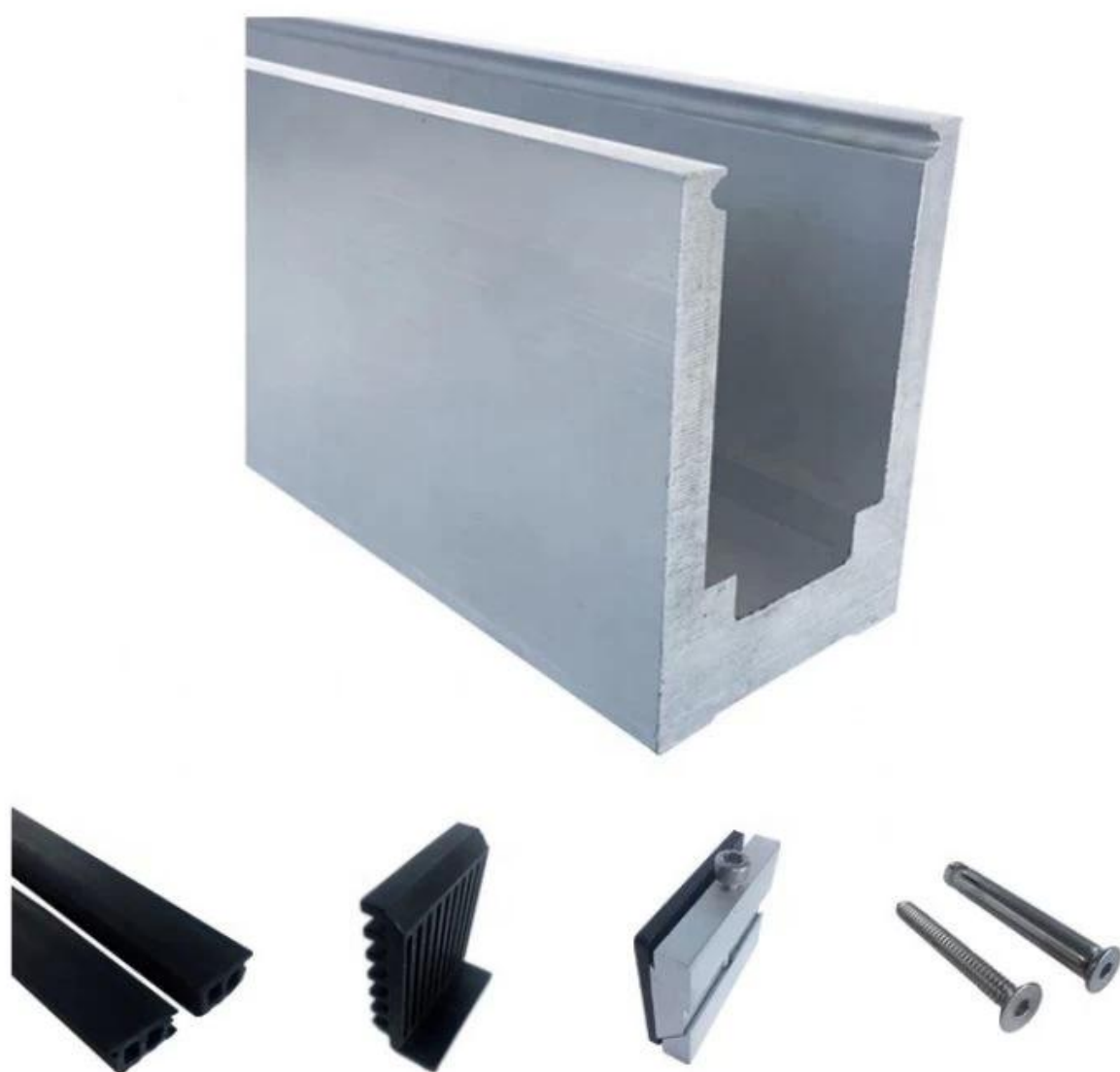


Canal de base en aluminium en U généralement fixé au sol, placé dans le bas des systèmes de garde-corps en verre pour supporter le verre. Les systèmes de garde-corps de balcon sont l'une des applications les plus courantes qui en ont besoin, car ils peuvent donner une vision large pour profiter de beaux paysages lorsque vous buvez un café ou lisez un livre sur le balcon.

Spectacle de produit

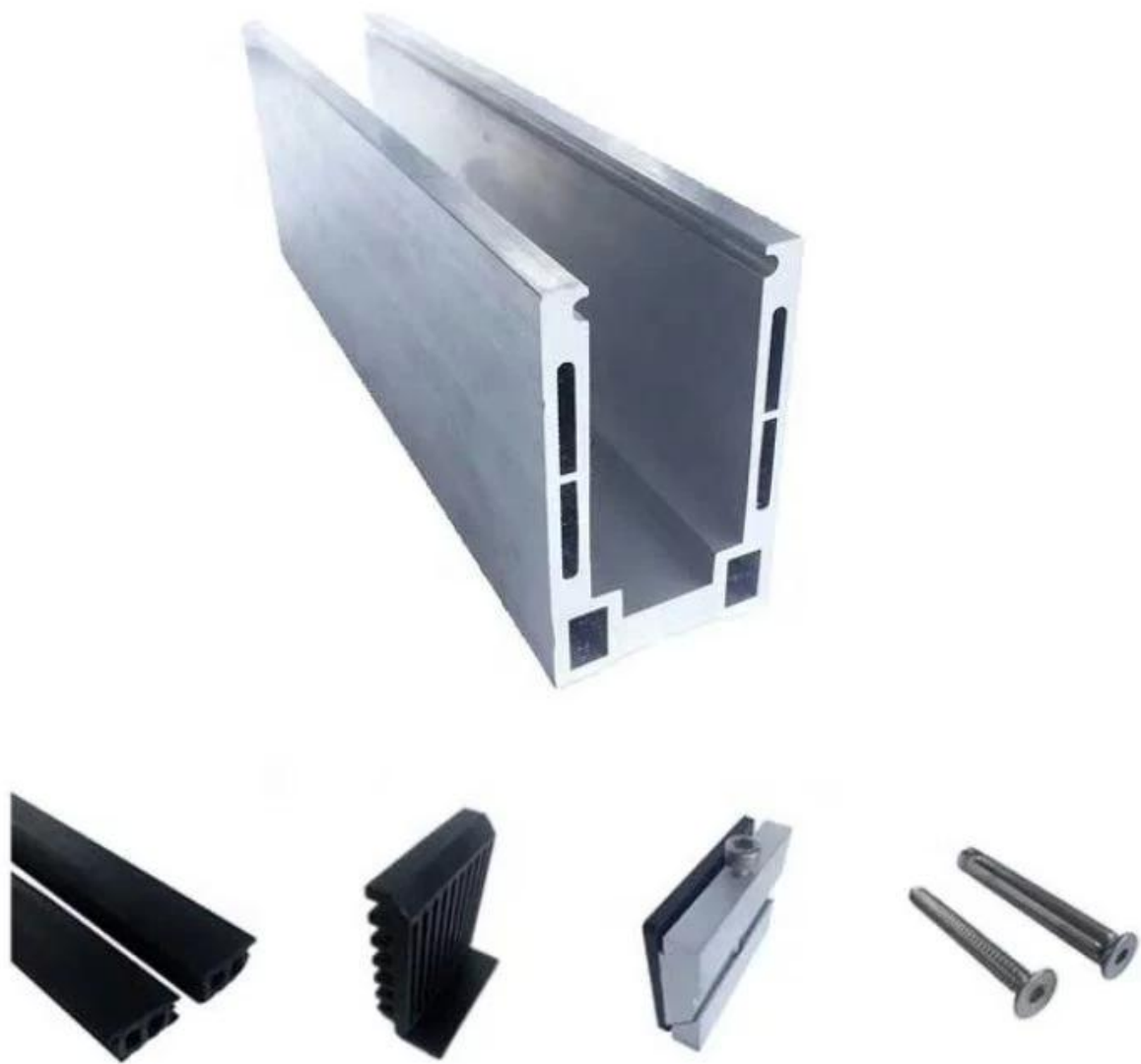
Profilé de base en aluminium de conception solide

Raccords: ruban étanche, raccords en plastique et en aluminium, boulons à expansion



Profilé de base en aluminium creux

Raccords: ruban étanche, raccords en plastique et en aluminium, boulons à expansion



Types de canaux de base en aluminium en U

LCH-A01 / A02

LCH-A01



20 mm to 21.52 mm tempered glass

1 m aluminium groove contains the following accessories (excluding glass)



LCH-A02



20 mm to 21.52 mm tempered glass

1 m aluminium groove contains the following accessories (excluding glass)



LCH-B01 / B02

LCH-B01



16 mm to 17.52 mm tempered glass

1 m aluminium groove contains the following accessories (excluding glass)



LCH-B02



16 mm to 17.52 mm tempered glass

1 m aluminium groove contains the following accessories (excluding glass)



LCH-C01 / C02

LCH-C01



12 mm to 13.14 mm tempered glass

1 m aluminium groove contains the following accessories (excluding glass)



Aluminum trough 1 m Waterproof tape 2 meters



Aluminum plastic fittings 3 sets



Expansion screws 3 pieces

LCH-C02



12 mm to 13.14 mm tempered glass

1 m aluminium groove contains the following accessories (excluding glass)



Aluminum trough 1 m Decorative cover 2 meters



Aluminum plastic fittings 3 sets



Expansion screws 3 pieces

LCH-D01 / D02

LCH-D01



12 mm to 13.14 mm tempered glass

1 m aluminium groove contains the following accessories (excluding glass)



Aluminum trough 1 m Waterproof tape 2 meters



Aluminum plastic fittings 3 sets



Expansion screws 3 pieces

LCH-D02



12 mm to 13.14 mm tempered glass

1 m aluminium groove contains the following accessories (excluding glass)



Aluminum trough 1 m Decorative cover 2 meters



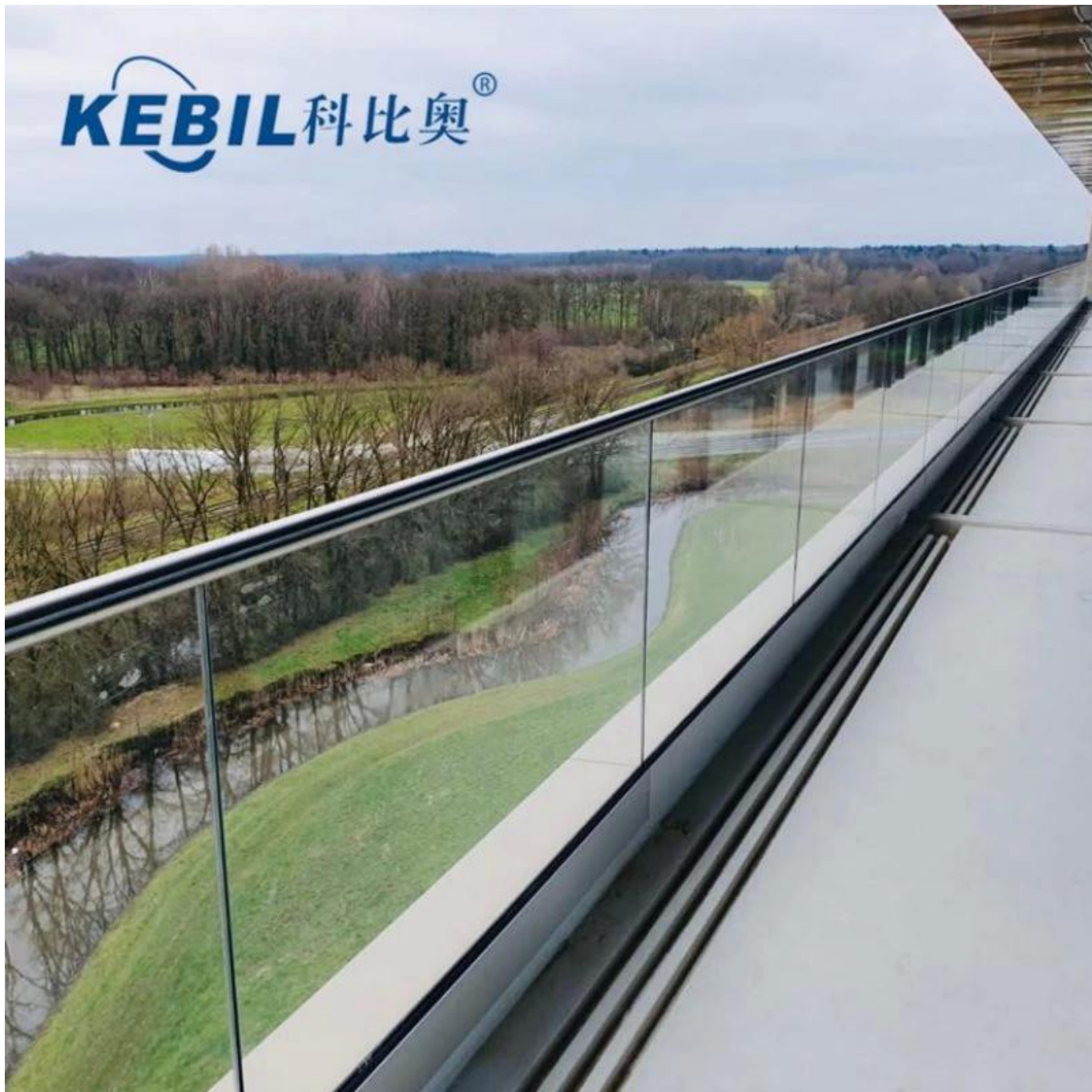
Aluminum plastic fittings 3 sets



Expansion screws 3 pieces

Dessins de projet

KEBIL 科比奥®





Tous les systèmes de canal U

U-Channel System



U-BASE CHANNEL

- Made of aluminum 6063 T5
- For use with 10-12mm glass
- 80x35mm
- 5.8m per length or as per your requirement



U-BASE CHANNEL

- Made of aluminum 6063 T5
- For use with 15-19mm glass
- 65.3x104mm
- 5.8m per length or as per your requirement



U-TOP CHANNEL

- Made of stainless steel 316L
- For use with 10-12mm glass
- ϕ 25.4mm
- 5.8m per length , or as per your requirement



U-TOP CHANNEL

- Made of stainless steel 316L
- For use with 10-12mm glass
- 25x20mm,
- 5.8m per length , or as per your requirement

Si vous avez des questions, n'hésitez pas à nous contacter.

Frank Fang

Téléphone / WhatsApp / Wechat: +8615906261741

Skype: lancement-02

Courriel: sales02@launch-china.cn