

## Prix d'usine vente directe en plein air 2-3 étapes pour Kit de main courante en fer forgé noir balustrades et mains courantes de garde-corps d'escalier

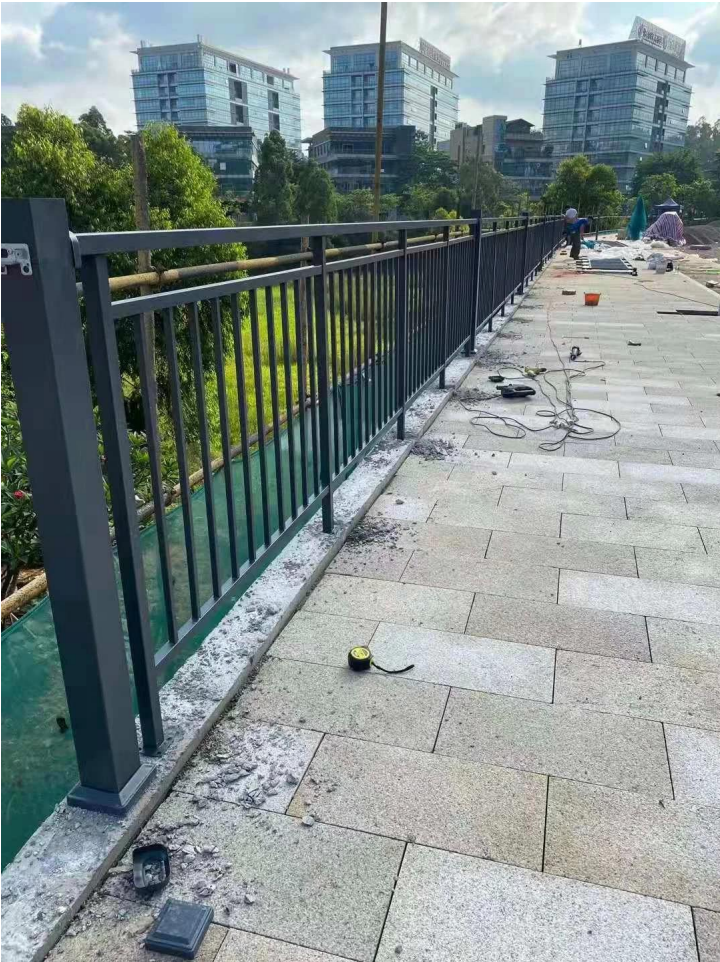
Nom du produit	Garde-corps en acier galvanisé	Taille régulière	H 1,1 M*L 1,2 M
Limite haute	2 M	Épaisseur du tube	1,2-2,5 mm
Lot de départ	20 m ou 20□	Lieu de produit	Province du Guangdong, Chine
Matériel	Acier	Méthode de calcul du prix unitaire	Hauteur inférieure à 1,2 m en mètres, Hauteur supérieure à 1,2 m en carré
Artisanat	assemblé et soudé	Traitement de surface	Couvert de poudre











## Assemblée:



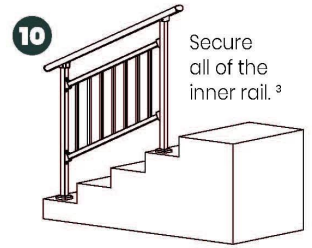
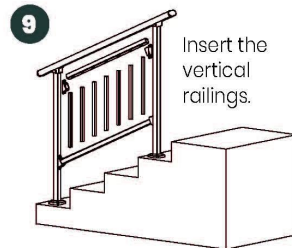
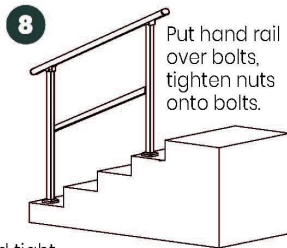
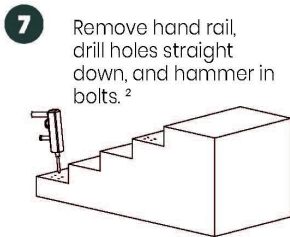
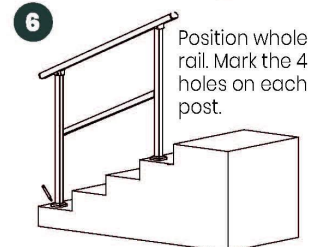
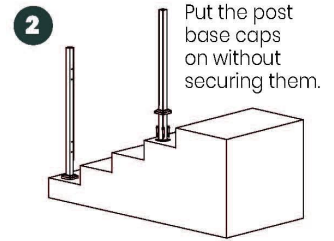
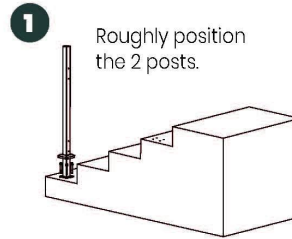
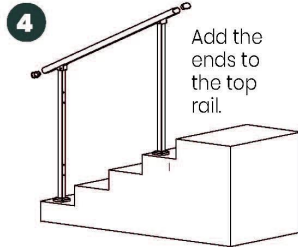
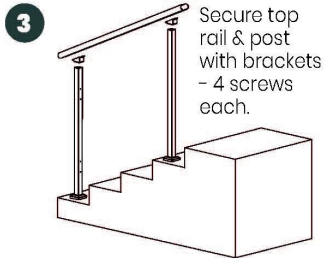


**Guides d'installation :**

# Guard Rail Assembly Instructions

**Tools Required:** Electrical Power Drill  
(Impact Drill Preferred)

**Overview:** Assemble the rail and position it before marking holes for drilling. Improper installation can lead to failure of rail system or injury.



<sup>2</sup> Double check posts are parallel and tight against inside rail before marking holes for drilling.

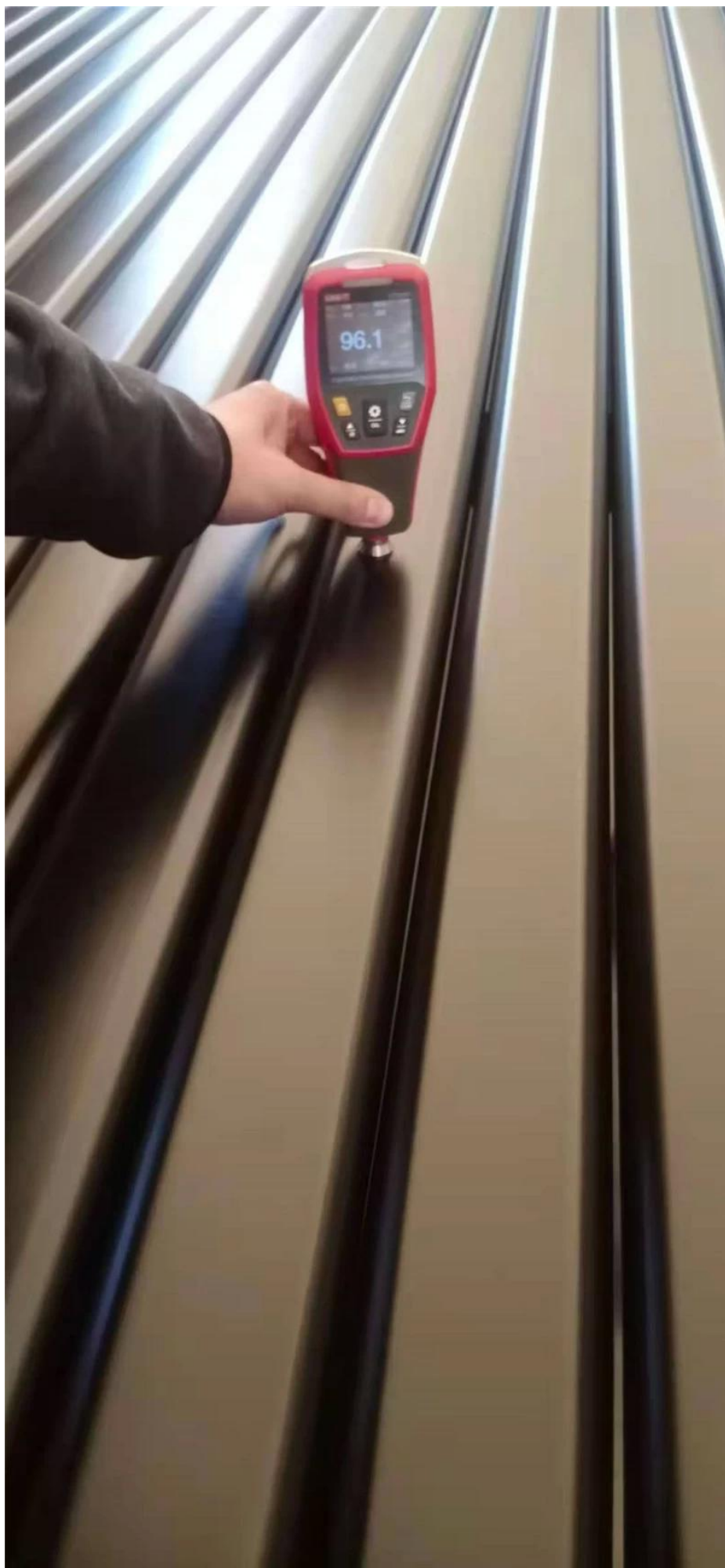
<sup>1</sup> Inside rail will be loose until each post is secured to the ground.

<sup>3</sup> Push and pull top rail & inside rail to ensure all is secure.

**Production & emballage de escalier acier mains courantes à notre atelier:**











**S'il te plaît sentir gratuit à contact nous pour plus détails:**

**Contact: Wendy**

**E-mail: [sales04@launch-china.cn](mailto:sales04@launch-china.cn)**

**HP/WhatsApp : 86159 8933 9827**