

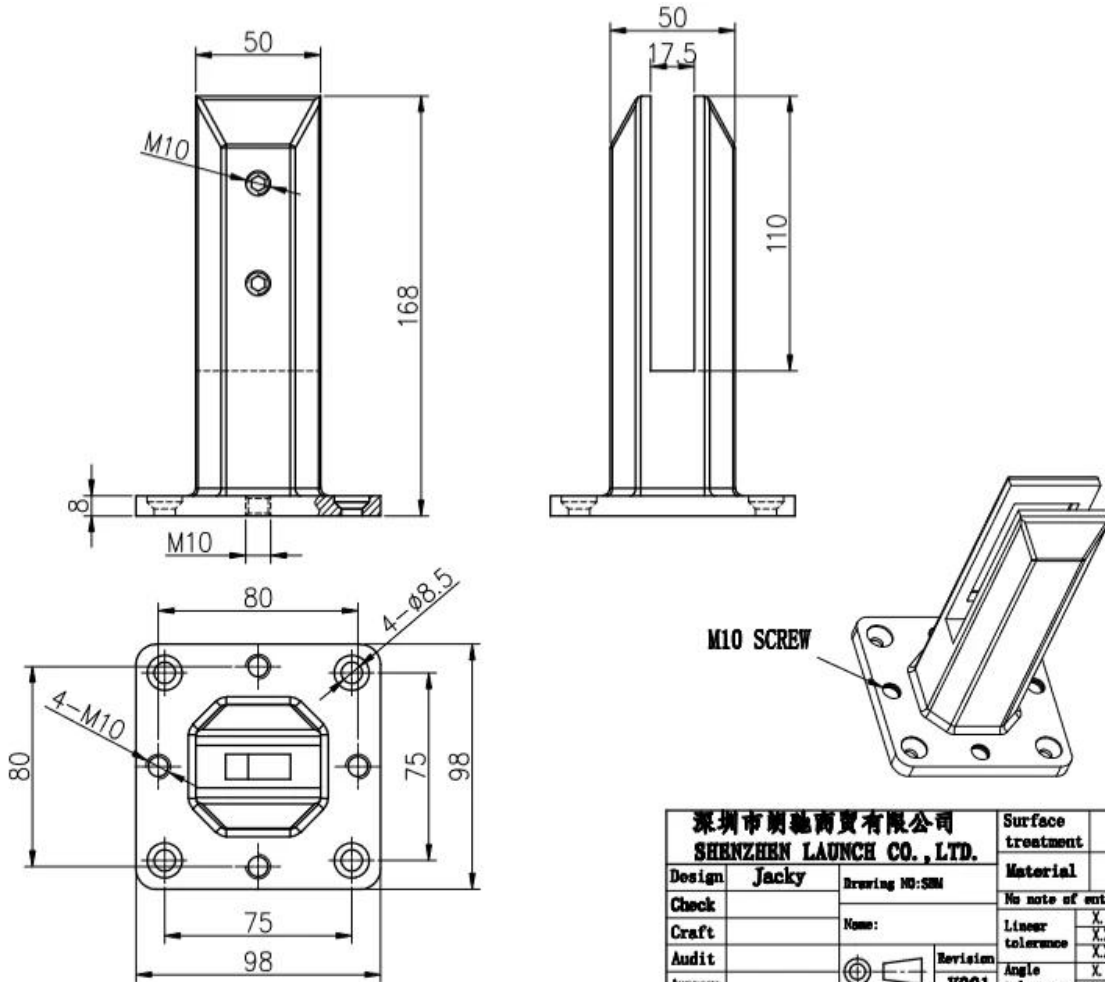
Ramffes en verre sans cadre avec des robinets en verre Duplex 2205 pour panneaux de verre de 10 mm à 13,52 mm.

Notre robinet de verre Duplex 2205 réglable est avec 4 trous supplémentaires et des vis sur la plaque de base et une plaque de nivellement PC à utiliser au bas de l'épineuse pour régler le niveau lorsque le sol n'est même pas.

### 1. Caractéristiques de la balustrade en verre avec des spigots en verre Duplex 2205

Matérielderobinetprincipalecorps	Duplex 2205
Matériau pour vis, couvercle de base, plaque de nivellement	Acier inoxydable 316
Finir	Revêtement en poudre noir mat ou électroplacage; satin; miroir
Épaisseur du verre	10-13.52mm verre d'épaisseur
Hauteur	168mm; ou peut être personnalisé
Joint en plastique	Fabriqué en nylon, il peut durer du temps tout au long de la vie
Boulon en béton pour convenir	M8 * 100
Poids unitaire par pc	1,45 kg
En stock	Oui
Moq	2 pcs

### 2. Dimensions de Sbmverrerobinet-



深圳市朗馳商貿有限公司 SHENZHEN LAUNCH CO., LTD.		Surface treatment	Proportion
Design	Jacky	Material	1:2
Check		No note of entity size tolerance	
Craft		Linear tolerance	X ±0.1
Audit		XX	±0.1
Approve		XXX	±0.1
		Angle tolerance	X ±1°
		XX	±0.5°
		Revision	V001

**3.Chargementtest&MatérieltestpourSBM Duplex 2205verrerobinet-**

# LOADING TEST FOR SBM

## Introduction

MTS Metallurgical Testing Services was engaged to witness the installation of a sample pool fence spigot and to subsequently conduct load tests on the spigot to the requirements of Australian Standard AS1926.1 - 2012.

Standard/Specification AS 1926.1 - 2012, Section 3.2 and Appendix B

## Results Summary

(For details of individual tests, refer to the tables on the following pages.)

ID	Item/Heat No.	Dimensions/Type/Details	Finish	Overall Assessment
14117/01	SSRM316	70mm Square, Base Plate 316 Stainless steel	316l	COMPLIES

## Remarks

After completion of the testing, the spigot was found to be in sound condition with no breakage, tearing or signs of fracture and no looseness of the fixings.



Colin Cousins  
Metallurgical Testing Manager



Accreditation No: 15624  
Accredited for compliance  
with ISO/IEC 17025

## Strength Test

Test Specification AS 1926.1 - 2012, Appendix B Test Procedure MTS-TP3.1 Compression Tests - Products

Specimen ID	Observations	Assessment
14117/01	Test Equipment: Hydraulic ram and 10,000 N load cell Test Load: 330N Load Duration: 45 Secs Deflection under load: 1 mm Permanent Deflection after removal of test load: 0 mm	COMPLIES

Requirements No permanent damage or loosening of fixings.



12/16/2020 5:54:18 PM

Method: Fe-30  
 Comment: Cr-, Cr/Ni-steel  
 Type Standard 18--8

12/16/2020 5:54:09 PM  
 Type corr.concentr.

Sample Name: Sample ID:

	C	Si	Mn	P	S	Cr	Mo	Ni
	%	%	%	%	%	%	%	%
< x > (1)	0.0224	0.8873	1.1010	0.0263	0.0032	21.6796	3.0718	5.5691

	Al	Co	Cu	Nb	Ti	V	W	Pb
	%	%	%	%	%	%	%	%
< x > (1)	< 0.0005	0.0797	0.1603	< 0.0002	0.0044	0.0893	0.0305	< 0.0002

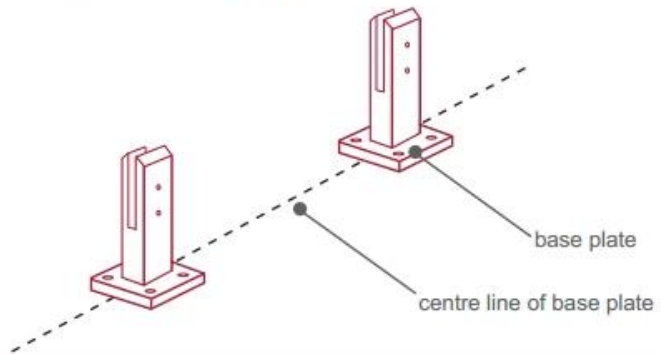
	Sn	Sb	B	N	Fe			
	%	%	%	%	%			
< x > (1)	0.0092	< 0.0004	0.0024	0.1024	67.1600			



## fixing method: base plate spigots

Mark out the centre line of proposed glass fence with a chalk line. Determine clamp location based on a sheet size (recommendation on pages 1 & 2). Use base plate as a template to mark out the hole positions and drill holes to suit.

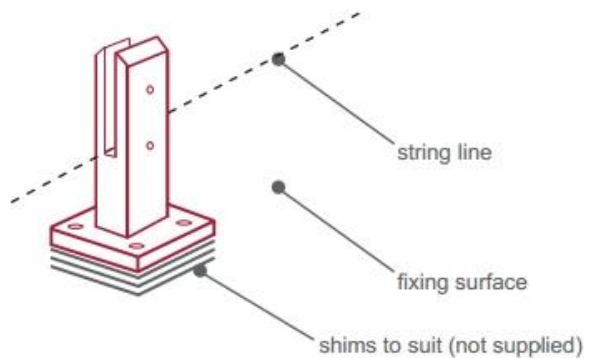
**Note:** Do not exceed 100mm gaps between glass panels. Optimum gap is 40mm to 60mm



Now the base plated spigots can be fitted to the floor and plumbed via shims (not supplied) under the base plates. Be sure to tighten firmly as the smallest of movement at the base plate will result in noticeable movement at the bottom of the glass fence.

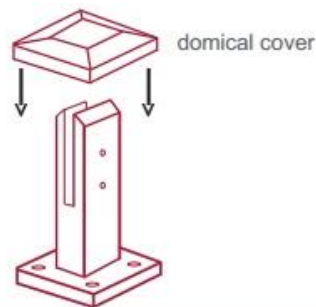
**Tip:** By setting the two outer spigots of your total span, a string line can be run in the 'throat' of the spigots, giving correct height for all spigots in between

**Note:** Do not exceed 100mm gap from the fixing surface to the bottom of the glass



When all spigots are installed, slip domical cover the top of the spigot to hide fixings. It will be necessary to turn the adjustment screws on the spigot face all the way in to allow cover to pass over

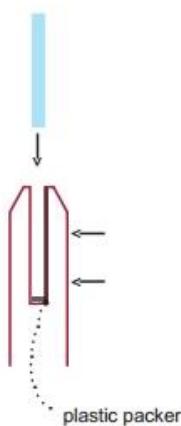
**Note:** Same installation method applies to round base plate spigot



The glass is then installed to the spigots. Place plastic packers between glass & spigot, at no stage should glass touch the metal

### How adjustability works:

1. Place glass in spigot
2. Fix/ tension glass both sides with allen key

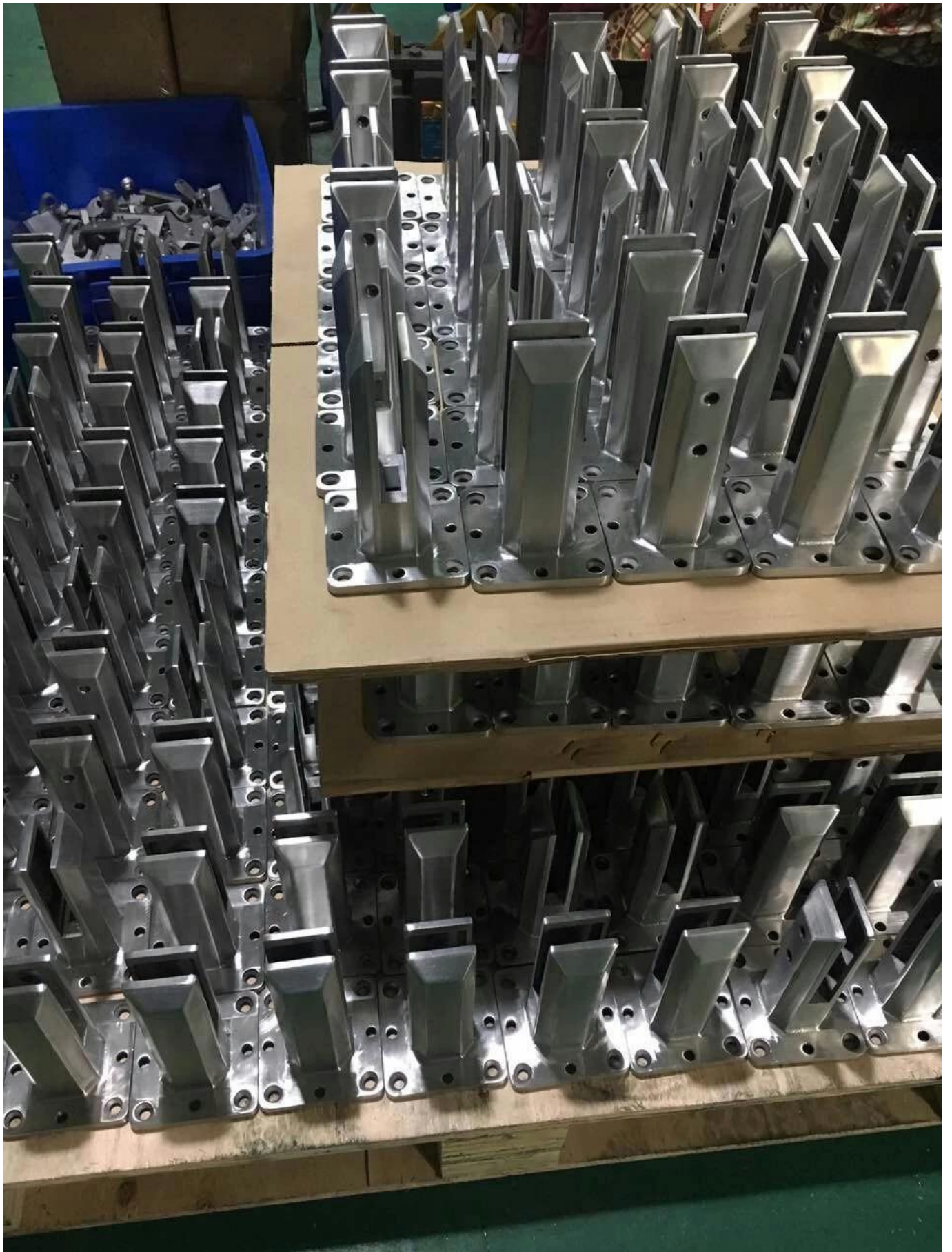


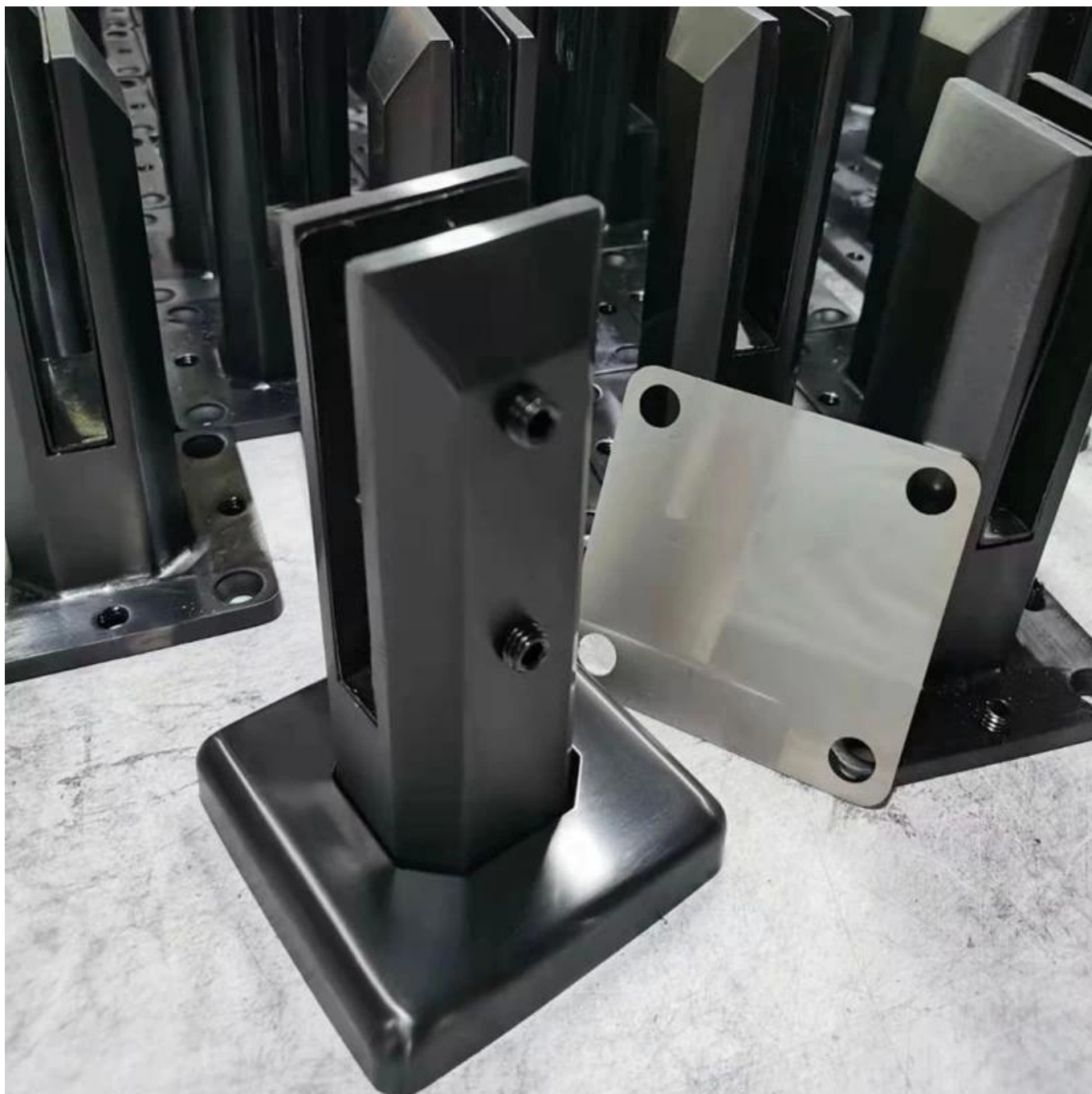
## 5 Emballages des détails pour Sbm Duplex 2205 Spigots en verre -

1 pc dans une boîte blanche; 12 pcs dans un carton-



6MasseProductionTraiterpourSbmverrerobinet-





**7.Suites des modèles de verrerobinet pourvotresélection-**





Glass spigot



MODEL # SBM



MODEL # SCM



MODEL # RBM



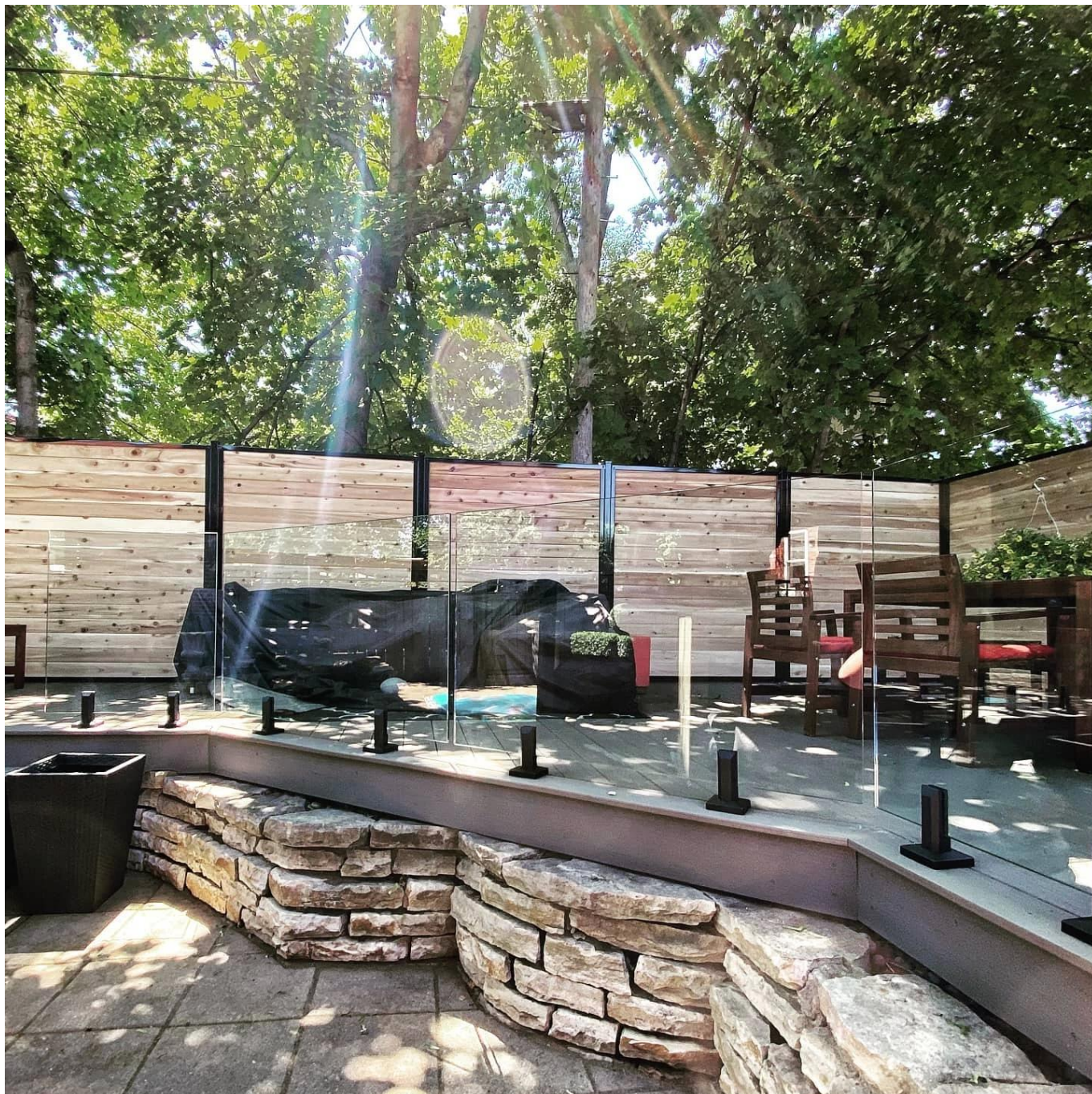
MODEL # RCM

8ProjetPhotosdeSans cadreVerreBalustradeavecverrecrampons-









**Nous avons également des charnières en verre et des loquets magnétiques et des pinces de verre et du verre trempé pour aller avec l'ensemble du système de garde-corps en verre sans cadre.**

N'hésitez pas à nous contacter maintenant pour obtenir des devis!

**Shenzhen lance Co., Ltd**

*Vérfié par SGS, rapport N ° 19536352\_P + T*

Office Ajouter:

B5-003, 5 / F-Block 3, Yilida Building, N ° 1092 Nanshan Road, District de Nanshan, Shenzhen, Chine, Code Postal 518054

Tél: 86-755-86037559 Fax: 86-755-86372611

MOB (WhatsApp, Wechat, Viber) +86 135 9027 3543

Contact: Celia Chen