

T
O
N
O
m
h
h
o
y
d
e
e
m
e
r
e
A
c
i
e
r
i
n
o
x
y
d
M
b
t
e
r
B
e
B
o
u
d
u
p
l
e
x
2
2
5

P
o
l
i
,
s
a
t
i
n
é
o
u
q
u
e
l
l
i
n
v
l
a
n
i
s
é
e
n
n
o
i
r
/
o
r

E
m
b
a
l
l
a
g
e
s
t
a
n
d
a
r
d
s
a
n
s
l
o
g
o
p
p
q
u
e
s
t
i
o
n
s
a
n
d
e
s
c
l
i
e
n
t
s

T
/
T
3
%
d
é
p
ô
t
a
v
M
n
d
é
l
é
t
á
s
h
è
p
a
é
a
m
a
n
t
l
'
e
x
p
é
d
i
t
i
o
n

1
-
2
s
e
m
H
è
n
e
e
d
ø
r
è
v
r
a
n
s
b
n
m
a
t
i
o
n
l
p
c
p
a
M
ø
Q
t
i
c
l
e

Produits Spectacle:

**Noir mat Clôture en verre pour clôture de piscine en acier inoxydable
avec pince SBM-3:**

KEBIL 科比奥®



KEBIL 科比奥®



Photo du projet:



Satin brossé Clôture en verre en acier inoxydable de pince de piscine de pince de clôture en acier inoxydable SBM-3:





SBM



Mirror



Satin

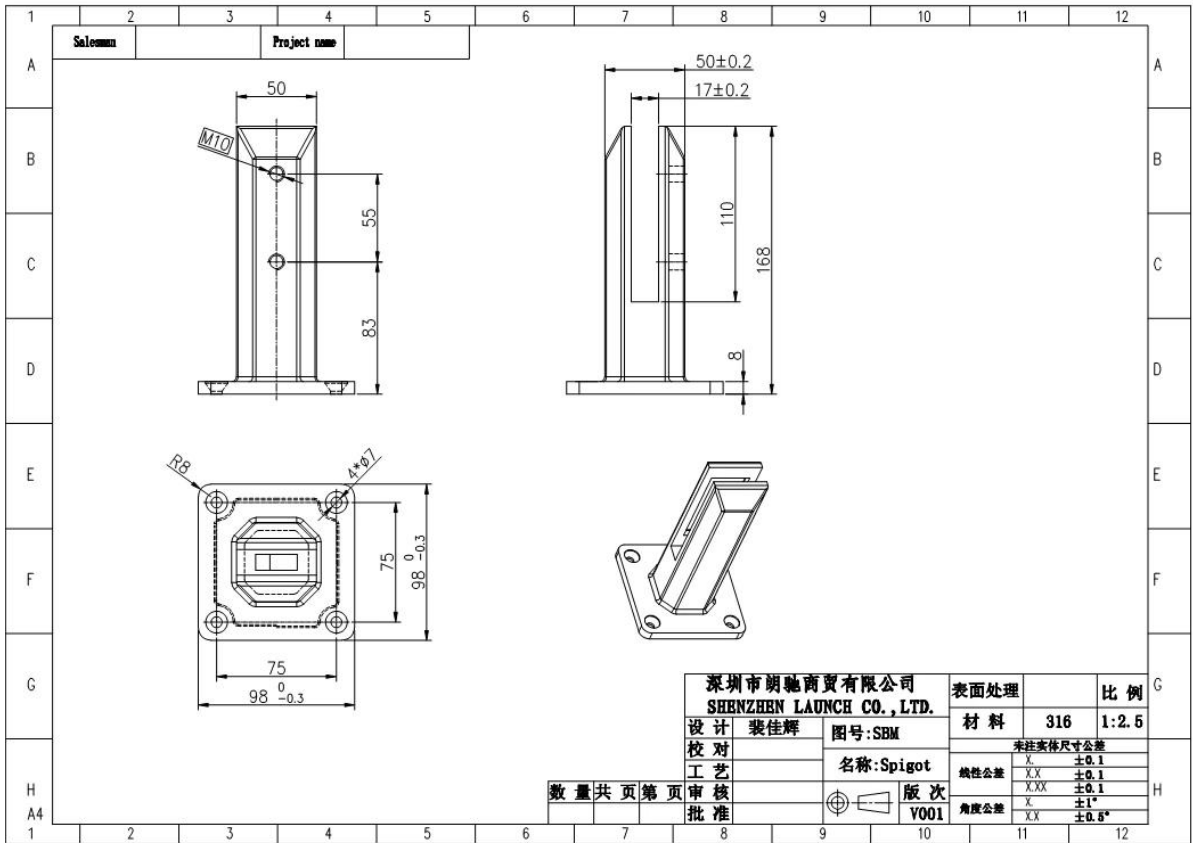
Or poli Clôture en verre en acier inoxydable de pince de piscine de pince de clôture en acier inoxydable SBM-3:



Noir poli Clôture en verre de clôture de piscine en verre de pince de clôture d'acier inoxydable:

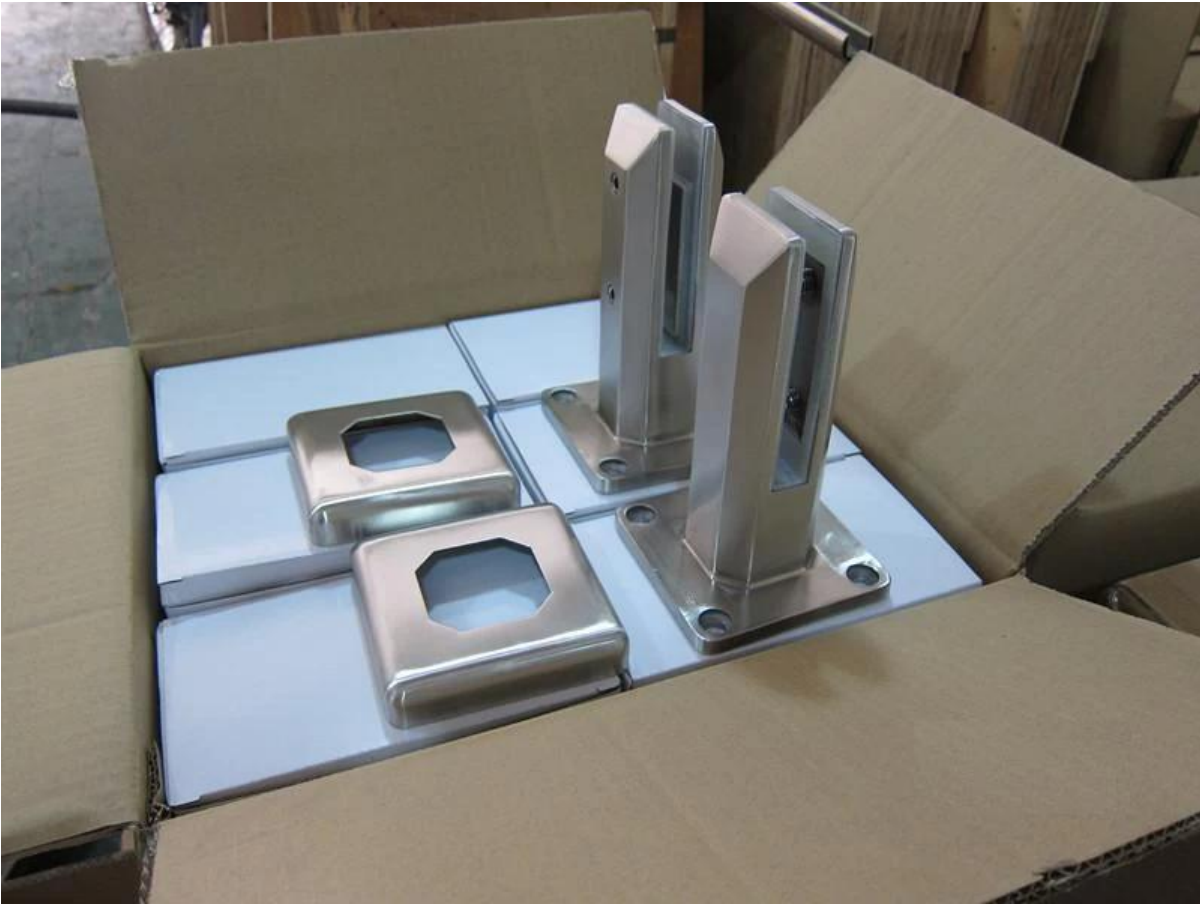


Dessin technique:



Emballage:





Photos du projet:

SBM en finition miroir:



SBM en finition satinée:



Shenzhen Launch Co., Ltd est une fabrication professionnelle avec conception, production et vente de quincaillerie en acier inoxydable, de raccords de garde-corps en verre, d'accessoires

pour mains courantes et d'autres produits.

POURQUOI NOUS CHOISIR

Prix concurrentiel: fabrication de la Chine continentale

Bonne qualité: 14 ans d'expérience technique

Excellent service: 14 ans d'expérience à l'exportation dans le monde entier

Différents modèles sont disponibles selon les demandes du client

Shenzhen Launch Co., Ltd was established in 2004, located at Nanshan District, Shenzhen, and one hour by car from Hongkong International Airport. Our main product is high-grade building materials includes stainless steel balustrade post, staircase handrail, balcony guardrail, swimming pool fence and other high-grade building materials. All the products are designed strictly according to the high-end market requirements. We have our own factory in Tangxia Town, Dongguan, has a variety of precision equipment more than 50 sets: CNC lathe, milling machine, punching machine, pipe cutter, argon welder, drilling machine, polisher, etc. which can provide customers with complete product processing services. With the German SPECTRO Spectrometer, we insist on testing every batch of materials to ensure that the material is highly qualified. We also have hardness gauge, secondary element and other test equipment to ensure the products meets customers' requirements.

ABOUT US

Our Team



OUR ADVANTAGE

Please do not hesitate to contact us if you have any requirement regarding our production lines, you can expect a timely reply with professional solutions!



Own factory, shortest lead time.



Can help customers design product drawings based on customer ideas and design engineering installation drawing according to the customer site sketch.



Sample order, trial order acceptable.



Provide material test report to ensure that the material is qualified.



13 years of industry experience, we can help customers recommend the best solution to help customers save cost.

OUR FACTORY

More than 13 years experience in hardware industry design and processing, we can provide customized services from design to the sample and small batch trial production.



OUR CERTIFICATE

With premium quality, competitive price and superior service, we won a lot of customers' favor.
Our products are popular in North America, European and Australia.



PRODUCTION PROCESS



Casting



CNC lathe



CNC Milling



Stamping



Drilling & Tapping



Polishing



PAYMENT & TRANSPORTATION

Welcome Alibaba Trade Assurance Order!



1 Start an order

2 Negotiate terms with our sales service & confirm order

3 Make payment

4 Alibaba provide full assurance



Emballage & Livraison

Détails d'emballage:

1. Chaque embout est emballé avec un film plastique et un airbag, puis placé dans un carton.
2. 100 embouts sont emballés dans une caisse en contreplaqué.
3. Peut également être emballé comme exigences de clients.

Détails de livraison: 10-15 jours ouvrables après le paiement.

Contactez-nous maintenant pour plus d'informations!

Email: sales03@launch-china.cn

Mobile: +8615907334556