

POURQUOI NOUS:

WHY CHOOSE US



15 YEARS EXPERIENCE

We have been manufacturing railing hardware since 2004.



ONE STOP SERVICE

We provide integrated railing solutions.
We manufacture.
We deliver.



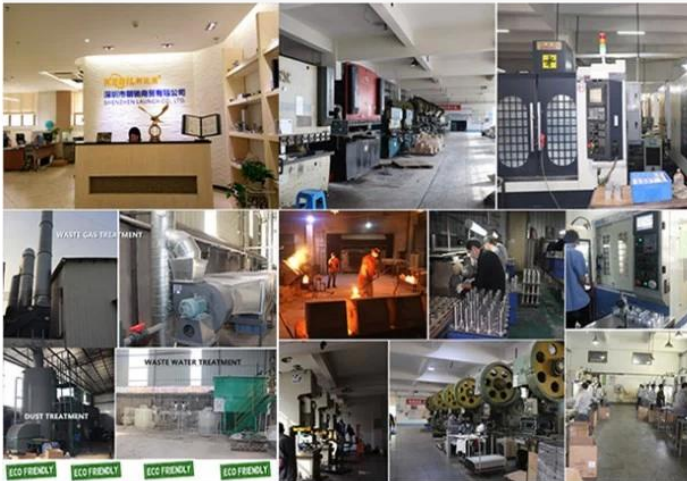
PROFESSIONAL R&D TEAM

We have engineering experts for developing new products.



TOP QUALITY & GOOD PRICE

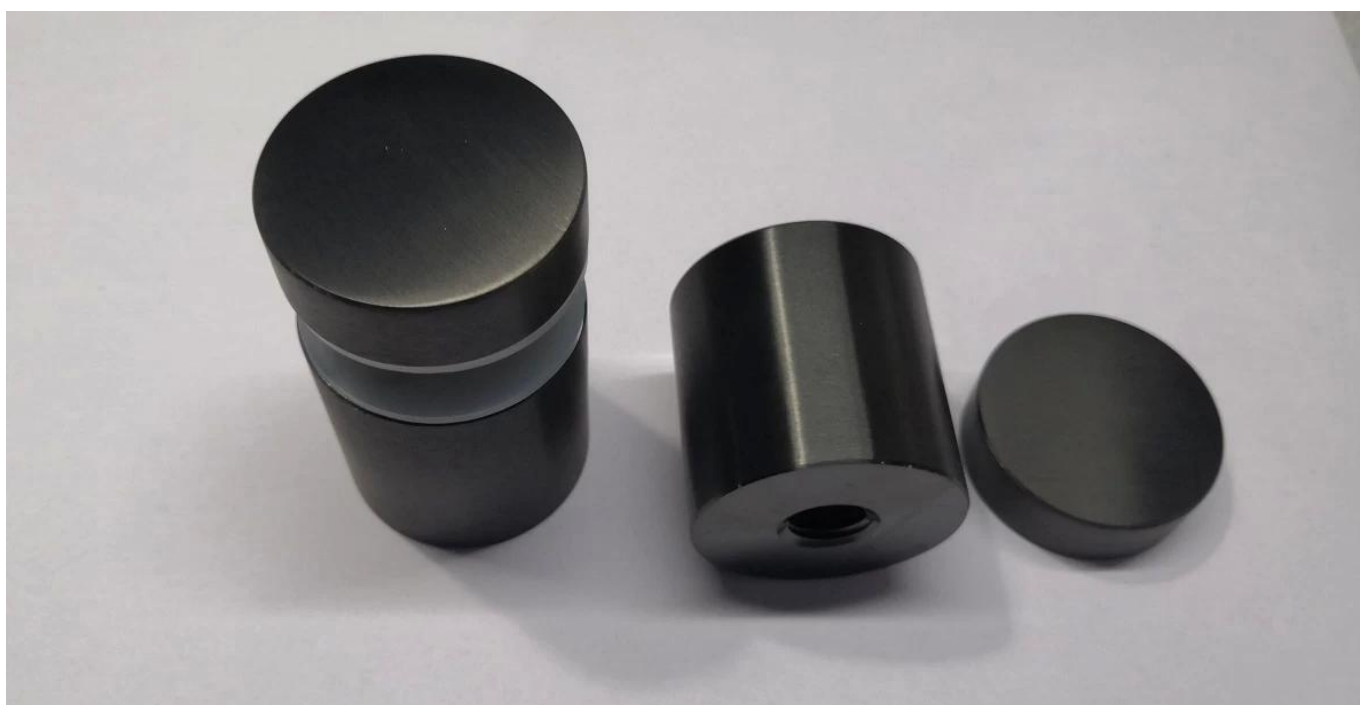
We are strict on quality control as well as cost evaluation.



ABOUT US

Shenzhen Launch Co., Ltd was established in 2004, located at Nanshan District, Shenzhen, and one hour by car from Hongkong International Airport. Our main products are high-grade building materials including stainless steel balustrade post, staircase handrail, balcony guardrail, swimming pool fence and other high-grade building materials. All the products are designed strictly according to the high-end market requirements. We have our own factory in Tangxia Town, Dongguan, with more than 50 sets of various precision equipments, such as CNC lathe, milling machine, punching machine, pipe cutter, argon welder, drilling machine, polisher, etc. which can provide customers with complete product processing services.





Nom du produit

Épingle de garde-corps de balustrade en verre en acier inoxydable garde-corps
garde-corps en verre noir

Modèle	SF-50
Matériel	Acier inoxydable 201/304/316
Un service	OEM depuis 16 ans
technique	Usinage CNC
Surface	Satin ou miroir ou noir mat
Pour épaisseur de verre	12-19 mm
MOQ	10 pièces
ODM et OEM	J'accepte
Délai d'exécution d'échantillon	3-15 jours
Paquet	Sac en plastique + cartons ou selon la demande des clients

Nous proposons d'autres conceptions d'écartement en verre, des dimensions personnalisées pour tout type sont disponibles.

Épingle de garde-corps de balustrade en verre en acier inoxydable garde-corps garde-corps en verre noir



SF-50T



SF-50A



SF-50



SF-38



SF-38Z



SF-30

Dimensions standard:



Part No.	Material	Finish	Body	Bolt size
<ul style="list-style-type: none"> ▪ SF-30 ▪ SF-40 ▪ SF-50 ▪ SF-50A 	<ul style="list-style-type: none"> ▪ AISI 304 ▪ AISI 316 	<ul style="list-style-type: none"> ▪ Satin ▪ Mirror 	<ul style="list-style-type: none"> ▪ 30x10; 30x25mm ▪ 40x10; 40x30mm ▪ 50x12; 50x30mm ▪ 50x12; 50x50mm ▪ silicon rubber gasket included 	<ul style="list-style-type: none"> ▪ M10x120 bolt ▪ M10x72 wood screw ▪ M8x100 bolt ▪ M8 x72 wood screw



Part No.	Material	Finish	Body	Bolt size
<ul style="list-style-type: none"> ▪ SF-38Z 	<ul style="list-style-type: none"> ▪ AISI 304 ▪ AISI 316 	<ul style="list-style-type: none"> ▪ Satin ▪ Mirror 	<ul style="list-style-type: none"> ▪ hollow type ▪ 38x7.5;38x38mm ▪ silicon rubber gasket included 	<ul style="list-style-type: none"> ▪ M8x70 hexagonal screw



Part No.	Material	Finish	Body	Mounting plate size
<ul style="list-style-type: none"> ▪ SF-50T 	<ul style="list-style-type: none"> ▪ AISI 304 ▪ AISI 316 	<ul style="list-style-type: none"> ▪ Satin ▪ Mirror 	<ul style="list-style-type: none"> ▪ 50x10;50x30mm ▪ silicon rubber gasket included 	<ul style="list-style-type: none"> ▪ 200x100x10mm

Photos du projet pour les goupilles de maintien de balustrade en verre en acier inoxydable



Photos du projet d'entretoise en verre





Contact

Merci pour votre visite!

Pour toute demande ou question, veuillez laisser un message. Je vous répondrai dans les 24 heures.

-Contact: Eve

-Email: sales03@launch-china.cn

-Mob / ce qui est APP: +8613686807796