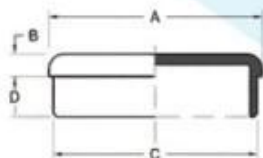


Embout en acier inoxydable pour tube

Présentez ici 4 types de nos embouts usagés courants, d'autres formes et tailles personnalisées nécessitent une évaluation plus approfondie. Bienvenue votre demande !!!

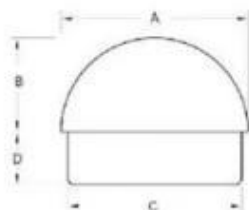
Type rond

[LCH-209 / 50.8](#)



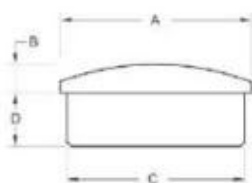
Part No.	size				Material	Finish
	A	B	C	D		
LCH-209/25.8	25	6	22	10	▪ AISI 304 ▪ AISI 316	▪ Satin ▪ Mirror
LCH-209/30	30	5	27	12		
LCH-209/33	33	5	30	12		
LCH-209/38	38	5	35	12		
LCH-209/40	40	5	37	12		
LCH-209/43	43	5	40	12		
LCH-209/50.8	50.8	5	47.8	12		
LCH-209/63.5	63.5	6	60.5	12		
LCH-209/43	43	3	40	12		
LCH-209/50.8	50.8	3	47.8	12		

[LCH-213 / 50.8](#)



Part No.	size				Material	Finish
	A	B	C	D		
LCH-213/43	43	22	40	12	▪ AISI 304	▪ Satin
LCH-213/50.8	50.8	25	47.8	12	▪ AISI 316	▪ Mirror

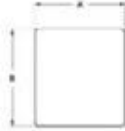
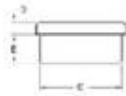
[LCH-214 / 50,8](#)



Part No.	size				Material	Finish
	A	B	C	D		
LCH-214/43	43	6	40	12	▪ AISI 304	▪ Satin
LCH-214/50.8	50.8	10	47.8	12	▪ AISI 316	▪ Mirror

Type carré

[LCH-211/50](#)



Part No.	size					Material	Finish
	A	B	C	D	E		
LCH-211/20	20	20	17	5	12	▪ AISI 304 ▪ AISI 316	▪ Satin ▪ Mirror
LCH-211/25	25	25	22	5	12		
LCH-211/30	30	30	27	5	12		
LCH-211/40	40	40	37	5	12		
LCH-211/50	50	50	47	5	12		
LCH-212	40	20	37x17	5	12		