

WHY CHOOSE US



15 YEARS EXPERIENCE

We have been manufacturing railing hardware since 2004.



ONE STOP SERVICE

We provide integrated railing solutions. We manufacture. We deliver.



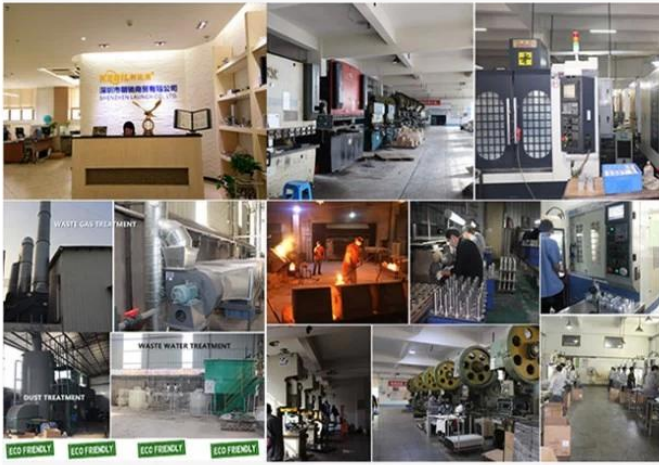
PROFESSIONAL R&D TEAM

We have engineering experts for developing new products.



TOP QUALITY & GOOD PRICE

We are strict on quality control as well as cost evaluation.



ABOUT US

Shenzhen Launch Co., Ltd was established in 2004, located at Nanshan District, Shenzhen, and one hour by car from Hongkong International Airport. Our main products are high-grade building materials including stainless steel balustrade post, staircase handrail, balcony guardrail, swimming pool fence and other high-grade building materials. All the products are designed strictly according to the high-end market requirements. We have our own factory in Tangxia Town, Dongguan, with more than 50 sets of various precision equipments, such as CNC lathe, milling machine, punching machine, pipe cutter, argon welder, drilling machine, polisher, etc. which can provide customers with complete product processing services.

Σύστημα κιγκλιδώματος γυαλιού

Αλουμίνιο U Κανάλι κιγκλίδωμα Προφίλ Προδιαγραφές

- Υλικό: Αλουμίνιο 6063 T5
- Φινίρισμα: Ανοδίωση
- Μήκος: 4m ανά μήκος ή έθιμο μήκος
- Για πάχος γυαλιού: 12-21,52mm γυαλί
- Πωλείται ως κιτ: συμπεριλαμβανομένων των βιδών, του καουτσούκ και των εξαρτημάτων

Αλουμίνιο U κανάλι για γυαλί 12mm

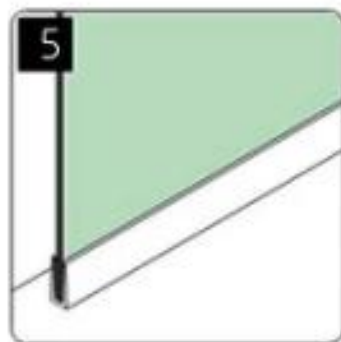
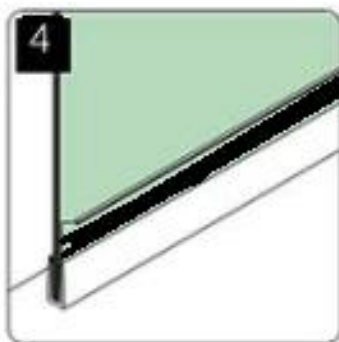
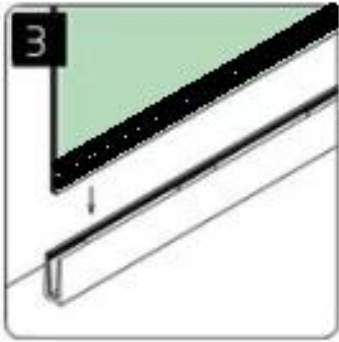
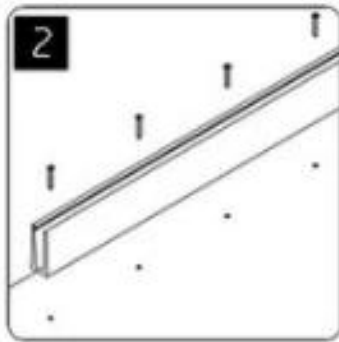
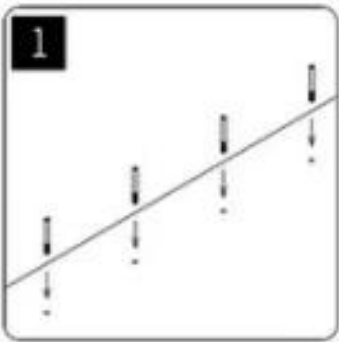
KEBIL 科比奥®





Εγκατάσταση καναλιού U αλουμινίου

installation



Άλλα μοντέλα αλουμινίου η κανάλι μπορεί να ενδιαφέρει

LCH-C01



12 mm to 13.14 mm tempered glass

1 m aluminium groove contains the following accessories (excluding glass)



Waterproof tape 2 meters



Aluminum plastic fittings 3 sets



Expansion screws 3 pieces

LCH-C02



12 mm to 13.14 mm tempered glass

1 m aluminium groove contains the following accessories (excluding glass)



Decorative cover 2 meters



Aluminum plastic fittings 3 sets



Expansion screws 3 pieces

LCH-D01



12 mm to 13.14 mm tempered glass

1 m aluminium groove contains the following accessories (excluding glass)



Aluminum trough 1 m



Waterproof tape 2 meters



Aluminum plastic fittings 3 sets



Expansion screws 3 pieces

LCH-D02



12 mm to 13.14 mm tempered glass

1 m aluminium groove contains the following accessories (excluding glass)



Aluminum trough 1 m



Decorative cover 2 meters



Aluminum plastic fittings 3 sets



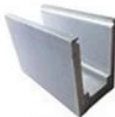
Expansion screws 3 pieces

LCH-B01



16 mm to 17.52 mm tempered glass

1 m aluminium groove contains the following accessories (excluding glass)



Aluminum trough 1 m



Waterproof tape 2 meters



Aluminum plastic fittings 3 sets



Expansion screws 3 pieces

LCH-B02



16 mm to 17.52 mm tempered glass

1 m aluminium groove contains the following accessories (excluding glass)



Aluminum trough 1 m



Decorative cover 2 meters



Aluminum plastic fittings 3 sets



Expansion screws 3 pieces

LCH-A01



20 mm to 21.52 mm tempered glass

1 m aluminium groove contains the following accessories (excluding glass)



Aluminum trough 1 m



Waterproof tape 2 meters



Aluminum plastic fittings 3 sets



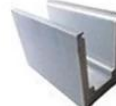
Expansion screws 3 pieces

LCH-A02



20 mm to 21.52 mm tempered glass

1 m aluminium groove contains the following accessories (excluding glass)



Aluminum trough 1 m



Decorative cover 2 meters



Aluminum plastic fittings 3 sets



Expansion screws 3 pieces

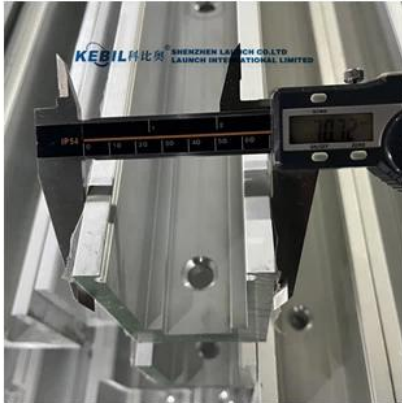
Aluminum u καναλιού κινκλιδώματος Φωτογραφίες έργου







Αλουμίνιο U κανάλι καναλιού

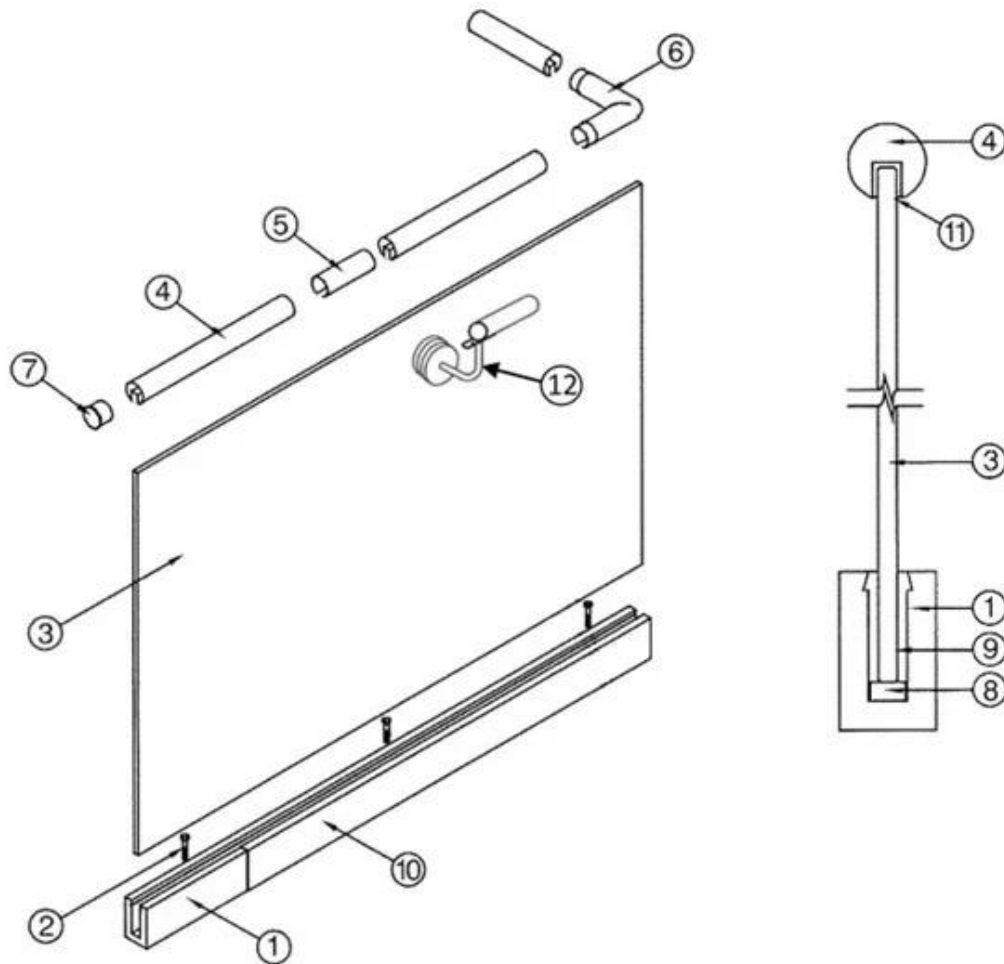




Σχετίζεται με προϊόντα- ανοξείδωτο χάλυβα C καναλιού

KEBIL 科比奧® SHENZHEN LAUNCH CO.LTD
LAUNCH INTERNATIONAL LIMITED





- | | |
|--|--|
| 1. Aluminum Railing Base | 7. End Cap |
| 2. Stainless Cap Screw | 8. Setting Block |
| 3. 1/2" Tempered Float Glass | 9. Expansive Cement |
| 4. Top Rail | 10. Cladding |
| 5. Splice | 11. Protective Insert |
| 6. Corner fitting
(Horizontal Shown Vertical
Also Available) | 12. Handrail Brackets and Fittings
Also Available |

Επικοινωνία

Ευχαριστούμε για την επίσκεψη ! Οποιαδήποτε ερώτηση ή έρευνα, αφήστε ένα μήνυμα. Θα σας επιστρέψει μέσα σε 24 ώρες.

Οποιαδήποτε επείγουσα έρευνα, παρακαλούμε επικοινωνήστε μαζί μας παρακάτω:

-Προστάτης: Wendy

-ΗΛΕΚΤΡΟΝΙΚΗ ΔΙΕΥΘΥΝΣΗ: sales04@launch-china.cn

-Καταστήματα: (86-755) 86037559

-MOB / WHERS APP: 0086-15989339827

-Skype: Launch_04