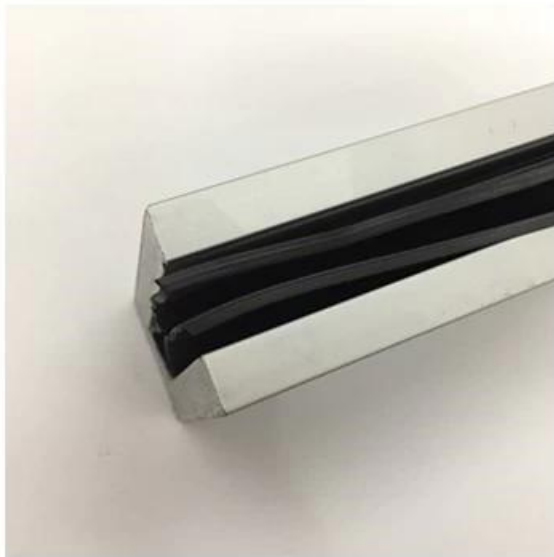
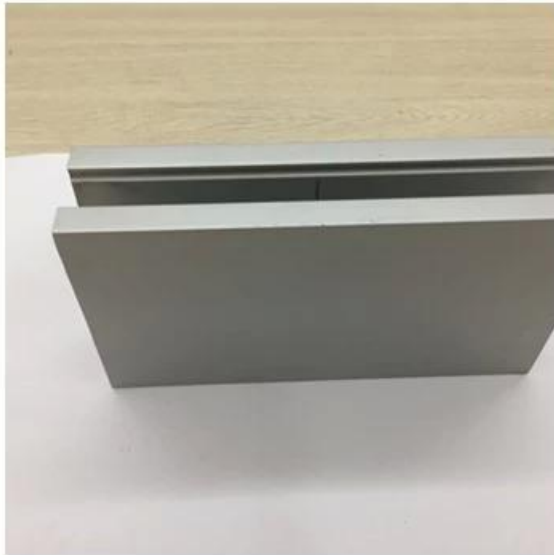
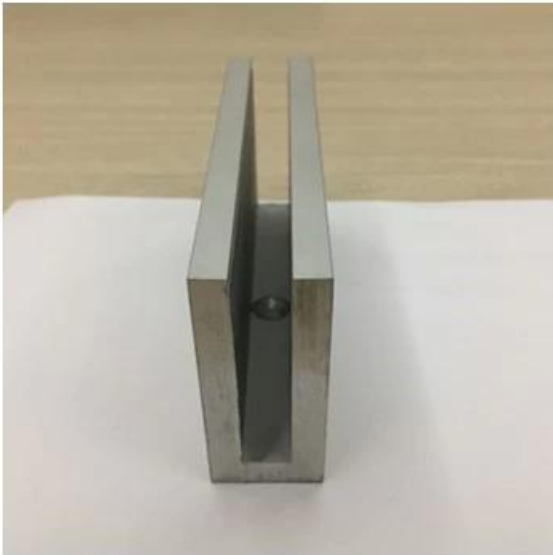


## **Inferriata di alluminio di Decking / balastra di vetro / inferriate di vetro di Manica U per il balcone**

### **Specifiche del profilo del canale a U in alluminio:**

Articolo	Ringhiera in vetro canale U, ringhiera in vetro canale U in alluminio, balastra in vetro con scarpa in alluminio
Materiale	Alluminio 6063 T3
finire	Anodizzato / verniciato a polvere
Dimensione	35 * 80mm / 63,5 * 104mm ecc
Spessore del vetro	12mm a 25mm
Tipi di slot	Rotondo o quadrato
Installazione	Viti autofilettanti / esplosive / Viti
Montaggio	Montaggio a pavimento / a parete
Applicazione	Balcone, terrazza, veranda, scale, terrazzo, hall, centro commerciale
Consegna	15-30 giorni

Per entrambe le applicazioni commerciali e residenziali  
Sia per il commercio all'ingrosso che al dettaglio (siamo produttori)





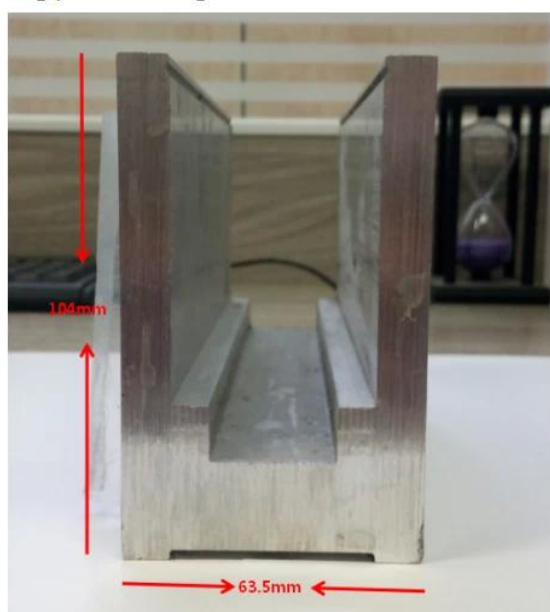
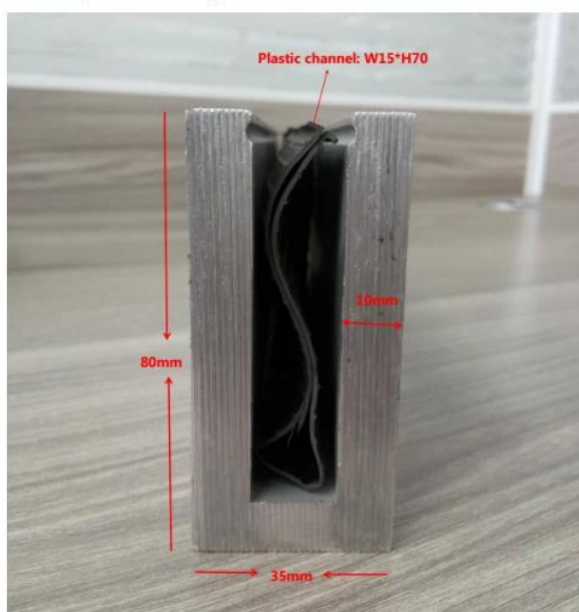




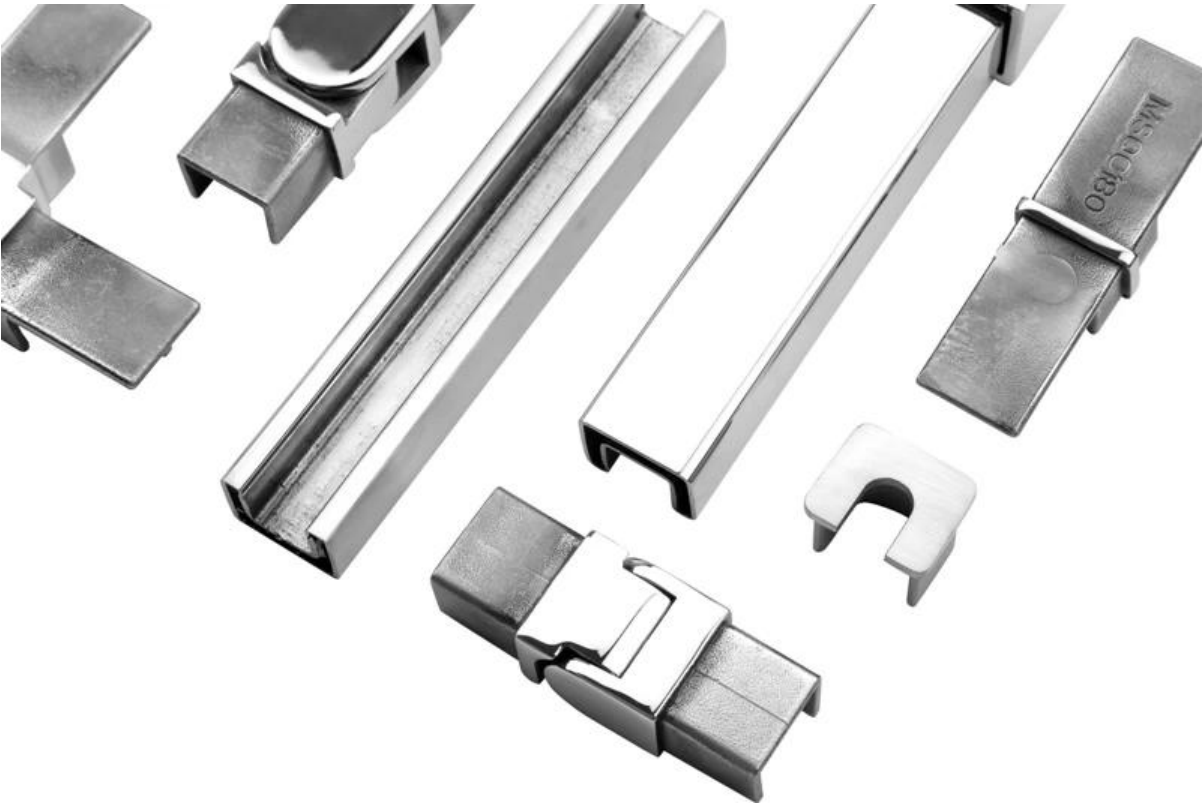
**PICCOLO & GRANDE TIPO IN ALLUMINIO U CANALE PER RINGHIATURA IN VETRO:**

Small profile: for glass thickness 10-12.76mm

Big profile: for glass thickness 20-30mm



**CORRIMANO TUBO SLOT:**







Shenzhen Launch Co., Ltd was established in 2004, located at Nanshan District, Shenzhen, and one hour by car from Hongkong International Airport. Our main product is high-grade building materials includes stainless steel balustrade post, staircase handrail, balcony guardrail, swimming pool fence and other high-grade building materials. All the products are designed strictly according to the high-end market requirements. We have our own factory in Tangxia Town, Dongguan, has a variety of precision equipment more than 50 sets: CNC lathe, milling machine, punching machine, pipe cutter, argon welder, drilling machine, polisher, etc. which can provide customers with complete product processing services. With the German SPECTRO Spectrometer, we insist on testing every batch of materials to ensure that the material is highly qualified. We also have hardness gauge, secondary element and other test equipment to ensure the products meets customers' requirements.

## ABOUT US



# OUR ADVANTAGE

Please do not hesitate to contact us if you have any requirement regarding our production lines, you can expect a timely reply with professional solutions!



Own factory, shortest lead time.



Can help customers design product drawings based on customer ideas and design engineering installation drawing according to the customer site sketch.



Sample order, trial order acceptable.



Provide material test report to ensure that the material is qualified.



13 years of industry experience, we can help customers recommend the best solution to help customers save cost.

# OUR FACTORY

More than 13 years experience in hardware industry design and processing, we can provide customized services from design to the sample and small batch trial production.





# OUR CERTIFICATE

With premium quality, competitive price and superior service, we won a lot of customers' favor.  
Our products are popular in North America, European and Australia.



# PRODUCTION PROCESS



Casting



CNC lathe



CNC Milling



Stamping



Drilling & Tapping

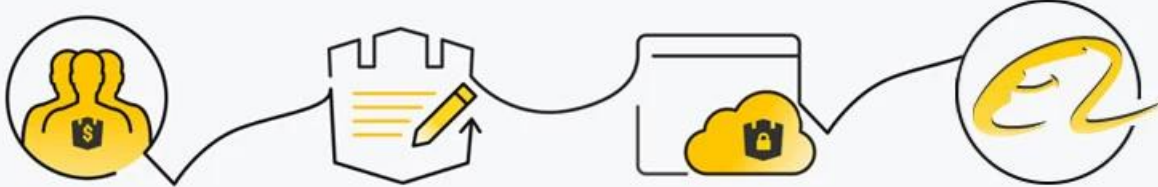


Polishing



# PAYMENT & TRANSPORTATION

Welcome Alibaba Trade Assurance Order!



1 Start an order

2 Negotiate terms with our sales service & confirm order

3 Make payment

4 Alibaba provide full assurance



PayPal



VISA

HSBC



XPL FedEx Express

EMS

DHL

TNT



## FAQ

1. sei fabbrica?

Sì, siamo fabbrica

2. Offrite campioni gratuiti?

Sì, offriamo campioni gratuiti, ma i clienti devono pagare spese espresse.

3. Che materiali hai?

Abbiamo il materiale di acciaio inossidabile 304, 316, 316L e Duplex 2205.



**4. Qual è il tuo MOQ?**

**MOQ di ordine richiesto è 1 pz.**

**5. Che tipo di pagamento accetti?**

**Accettiamo il pagamento di T / T, LC, PayPal, West Union, ecc.**

**6. Qual è il tuo termine di pagamento?**

**Il nostro termine di pagamento è T / T (100% o 30/70) o LC a vista.**

**7. Qual è il tuo tempo di consegna?**

**Il nostro tempo di consegna è da 5 giorni a 30 giorni base sulla vostra quantità.**

**8. Offrite OEM & Servizio ODM?**

**Sì, offriamo il servizio OEM e ODM.**

**9. Offrite un servizio post-vendita?**

**Sì, offriamo un servizio post-vendita. Qualsiasi reclamo per gli ordini sarà trattato in tempo entro 12 ore.**

**Contattaci ora per maggiori informazioni:**

**vigilia**

**Email: [sales03@launch-china.cn](mailto:sales03@launch-china.cn)**

**Cellulare / Whatsapp: +8615907334556**