

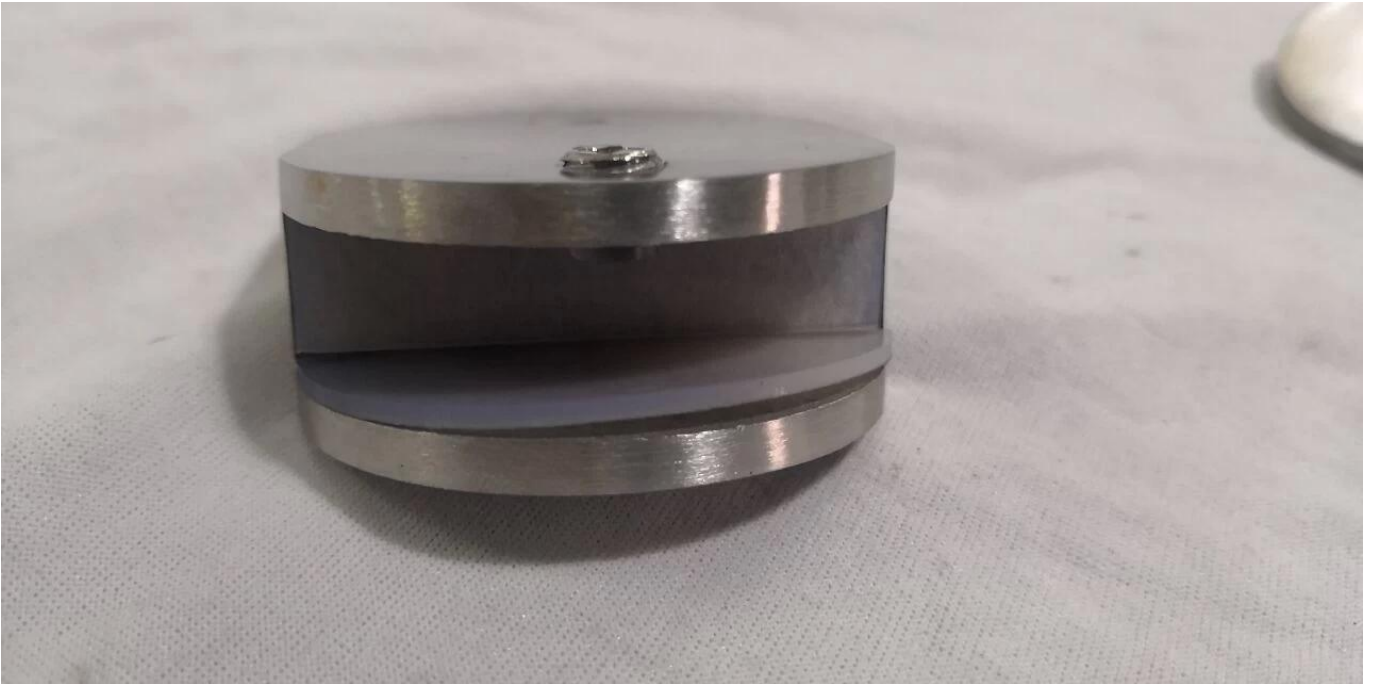
Ringhiera in vetro per balcone Morsetto a muro in acciaio inossidabile da 180 gradi

- Principale Caratteristiche di CB-180 morsetto da vetro a parete come segue:

- Materiale: acciaio inossidabile 304/316
- Realizzato con microfusione
- Finitura: satinato / specchio / nero
- Per vetri di spessore 8-12 mm
- MOQ 10 pezzi

- Foto del morsetto da vetro a parete CB-180







- Foto del progetto del vetro a 180 gradi al morsetto a parete CB-180

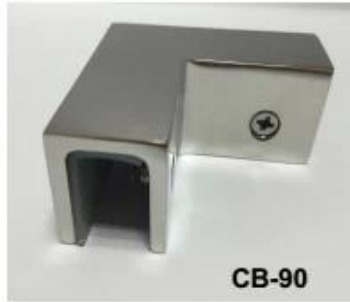


Altrobicchieremorsettia disposizione:-



BC-80x35

- Square 80x35mm clamps
- To hold **180°** glass panels
- For 8-12mm glass



CB-90

- Corner glass clamp
- To hold **90°** glass panels
- For 8-12mm glass



BC-60

- Round $\phi 60$ mm clamps
- To hold **180°** glass panels
- For 8-12mm glass



PV-90

- Corner glass clamp
- To hold **90°** glass panels
- For 12-15mm glass



CB-180

- **Glass to wall** clamps
- For 8-12mm glass



PV-135

- Corner glass clamp
- To hold **135°** glass panels
- For 8-12mm glass

Drawing	Picture	Ref.	A	B	C	D	E
		G108	55	55	30	11	0
		G108R	58	55	30	11	R25.4
		G101	51	41	25	11	0
		G101R	55	41	25	11	R21.5/R25.4
		G102	44	44	25	11	0
		G102R	48	44	25	11	R21.5/R25.4
		G103	50	40	22	8	0
		G104	50	40	26	12	0
		G105	54	45	28	14	0
		G107	63	45	28	14	0
		G103R	52	40	22	8	R21.5
		G104R	52	40	26	12	R21.5
		G105R	58	45	28	14	R21.5/R25.4
		G107R	66	45	28	14	R21.5/R25.4
		G106	50	40	25	12	0
		G106R	52	40	25	12	R21.5/R25.4

Non esitare a contattarmi per ulteriori informazioni:

Wendy: sales04@launch-china.cn;

Telefono / WhatsApp / Wechat: +86 15989339827