

Polvere Rivestimento B. Mancano rotaie a mano in acciaio a colori per scala all'aperto o interno. Verranno fornite tutte le staffe / viti necessarie.

Accessori per guide a mano in acciaio-

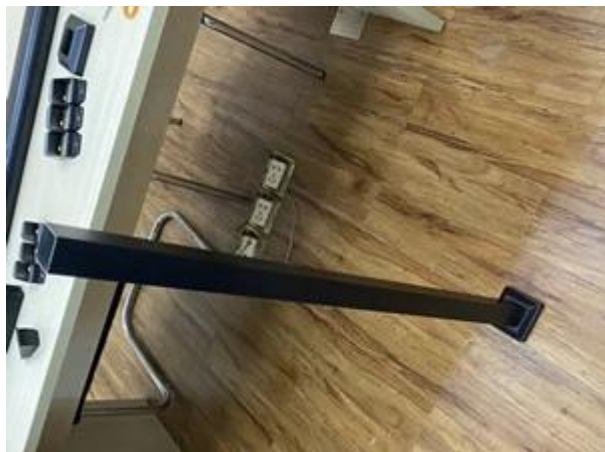
Rotaia medio corrimano scala per postare la staffa -



Barra centrale del corrimano scala, 32 * 32mm -



Corrimano per scale Post 40 * 40mm-



Tubo del corrimano superiore della scala-



Dopo il montaggio



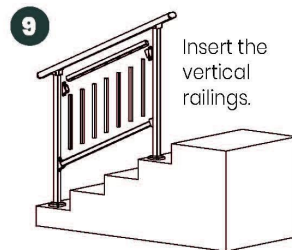
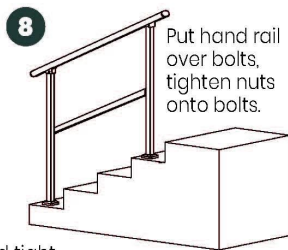
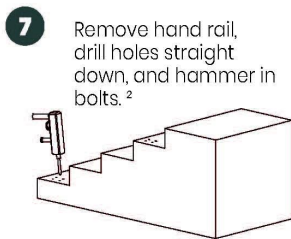
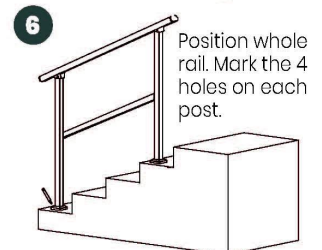
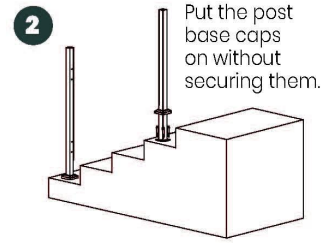
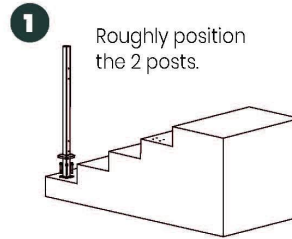
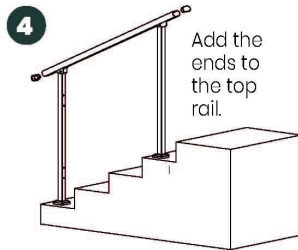
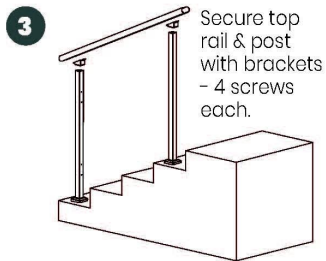


Guide di installazione-

Guard Rail Assembly Instructions

Tools Required: Electrical Power Drill
(Impact Drill Preferred)

Overview: Assemble the rail and position it before marking holes for drilling. Improper installation can lead to failure of rail system or injury.



² Double check posts are parallel and tight against inside rail before marking holes for drilling.

¹ Inside rail will be loose until each post is secured to the ground.

³ Push and pull top rail & inside rail to ensure all is secure.



