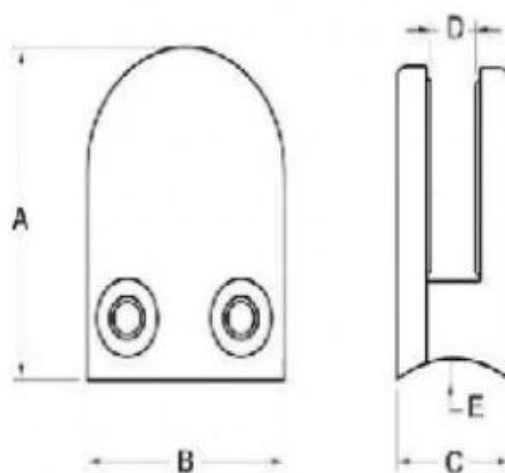


Specifiche del prodotto.

Nome del prodotto	Morsetto di vetro sagomato D
Materiale	AISI 304, AISI 316
Superficie	Raso, specchio, nero, bianco, altri
Spessore di vetro	6-12mm.
Applicazione	BALASTRADE POST, RINGOLO DI GLASSO

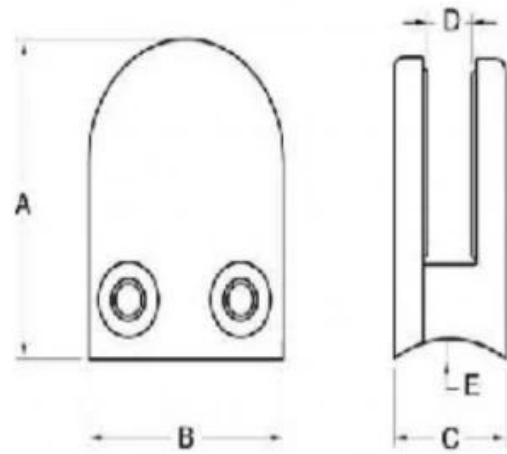
Prodottomostrare

G103 / G103R.6-8mm.bicchiere



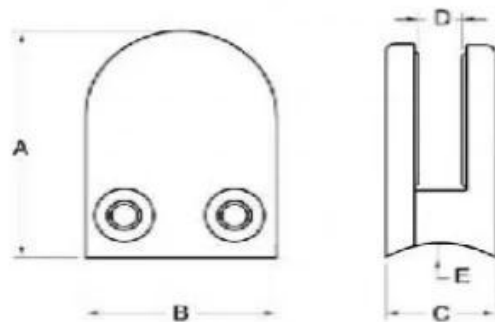
Model No.	A	B	C	D	E
G103	50	40	22	8	0
G103R	52	40	22	8	R-21.5

G104 / G104R.8-10mm.bicchiere



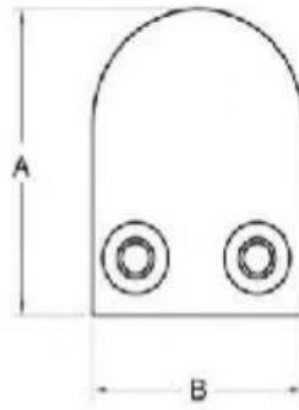
Model No.	A	B	C	D	E
G104	50	40	26	12	0
G104R	52	40	26	12	R-21.5

G105 / G105R.10-12mm.bicchiera



Model No.	A	B	C	D	E
G103	50	40	22	8	0
G104	50	40	26	12	0
G105	55	45	28	14	0
G103R	52	40	22	8	R-21.5
G104R	52	40	26	12	R-21.5
G105R	58	45	28	14	R-25.4

G106 / G106R.Vetro 6-8mm utilizzato all'angolo



Model No.	A	B	C	D	E
G106	50	40	25	11	0
G106R	52	40	25	11	R-21.5

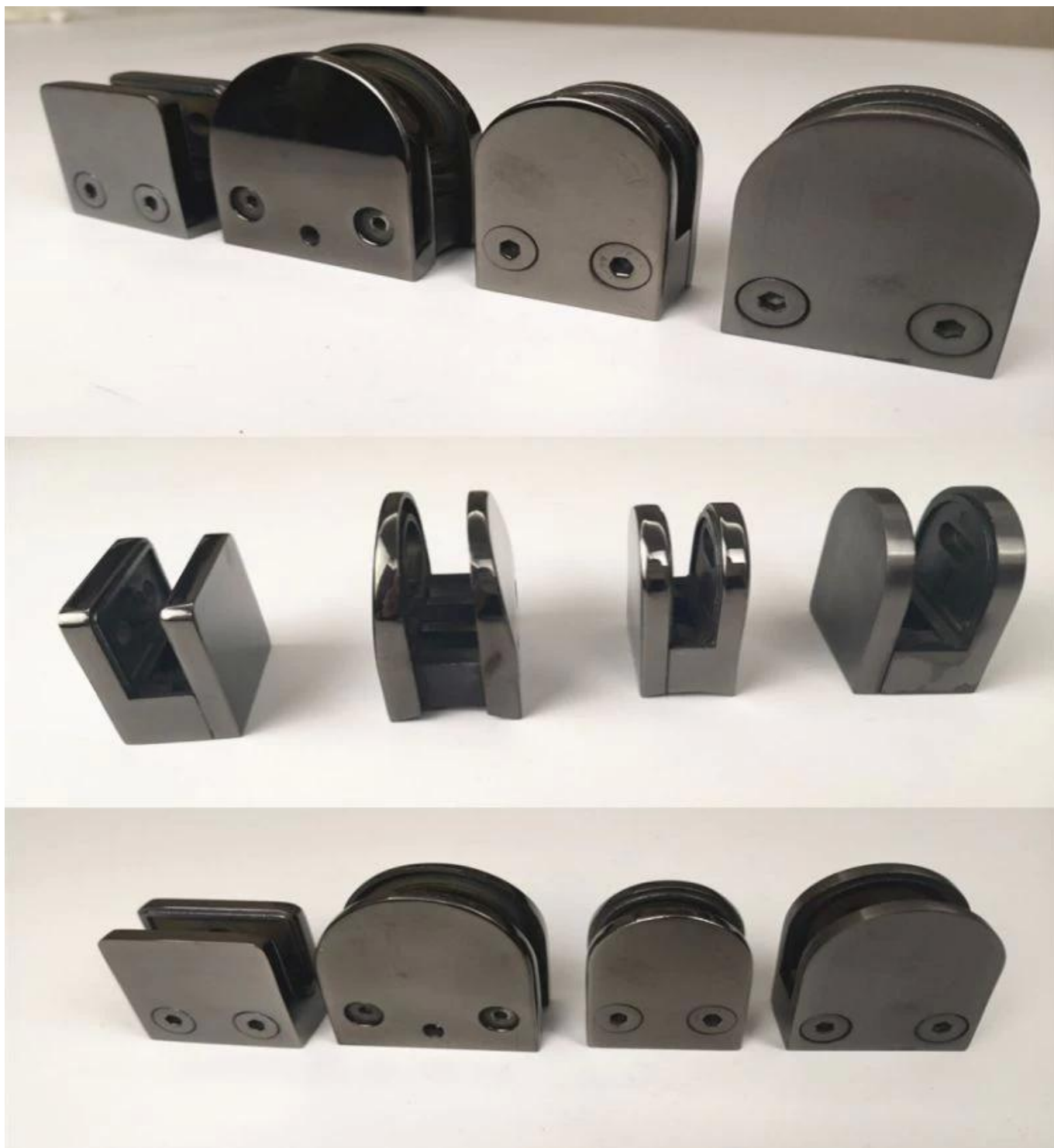
Superficie spazzolata satinata



Specchio lucido superficie



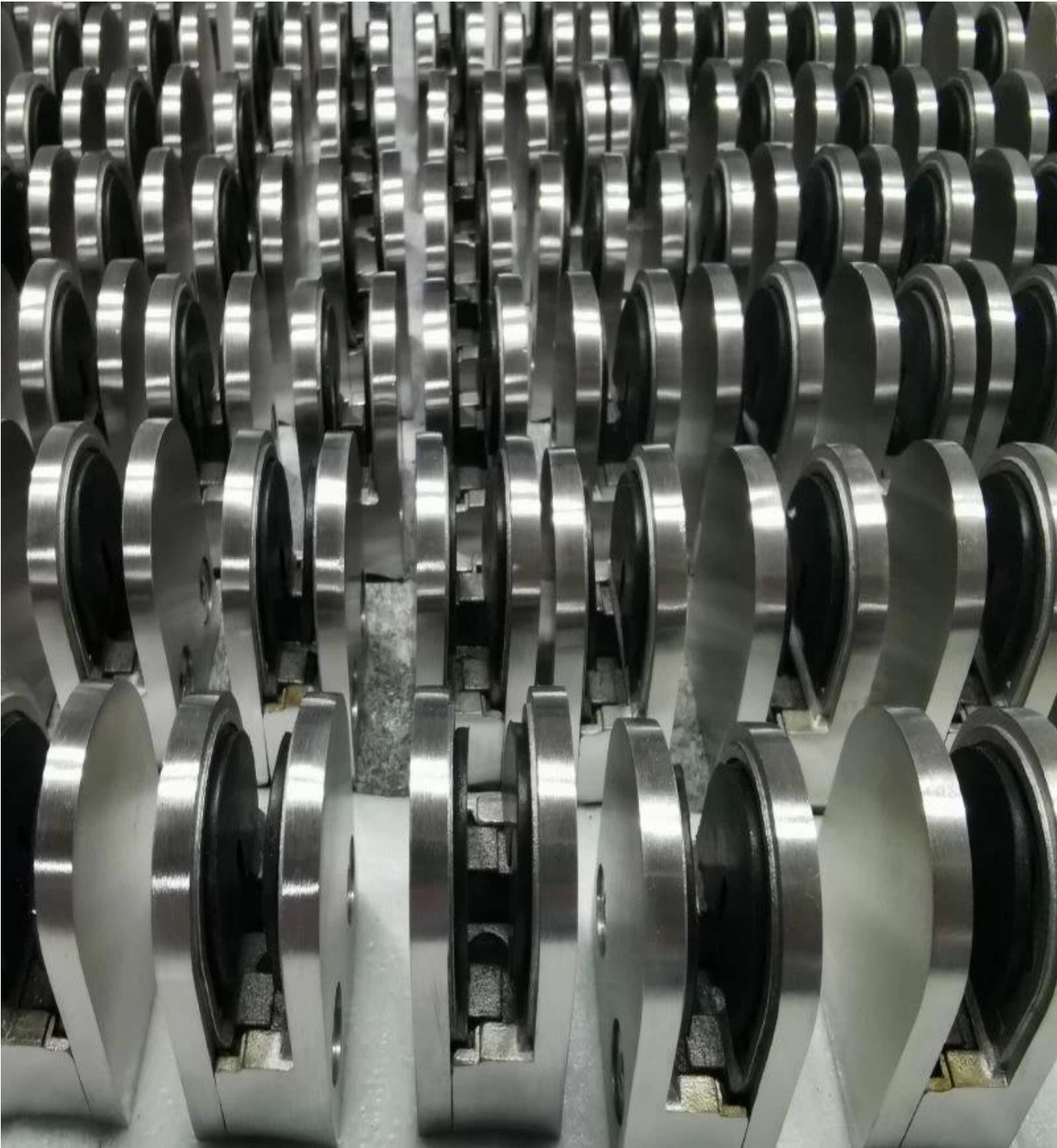
Superficie di colore nero.



Superficie di colore bianco.



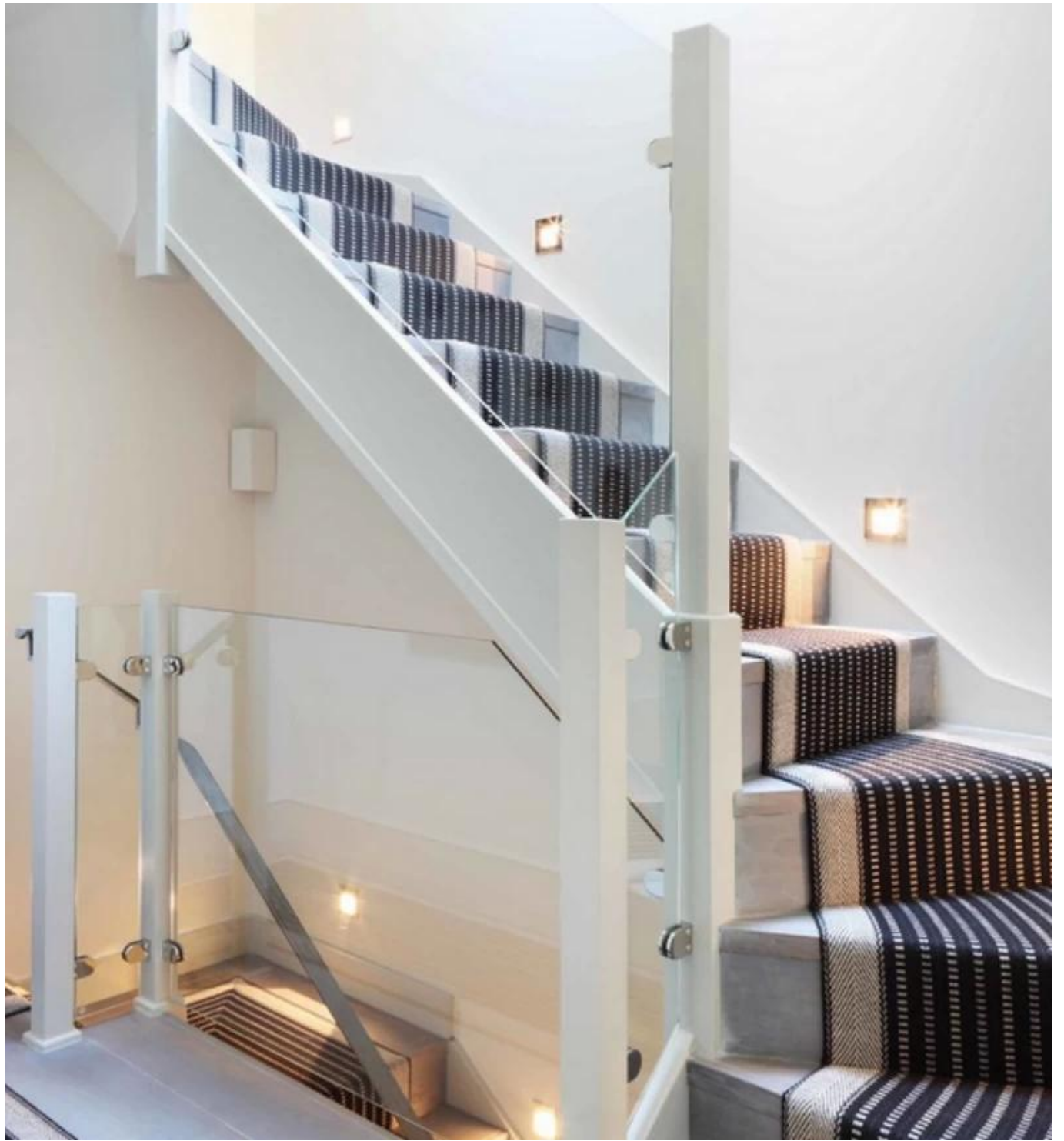
Massaproduzione

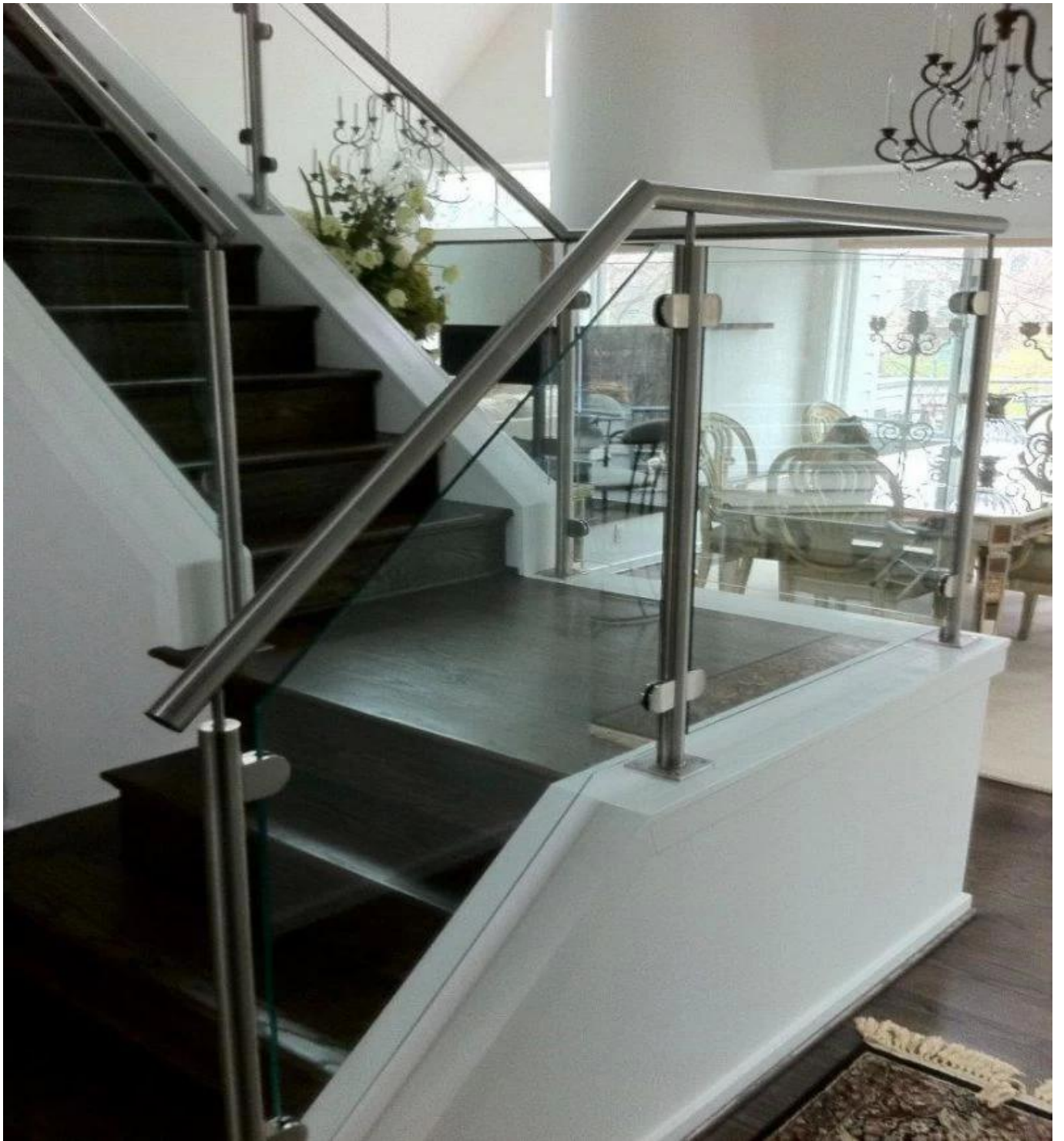






Applicazione







Qualsiasi domanda, non esitate a contattare.

Franco

Email: sales02@launch-china.cn.

Whatsapp / WeChat / Telefono: +8615906261741