

Shenzhen Lanciare Co., Ltd specializzato in sviluppo e produzione Alto Grado Metallo Edificio Materiali da 2004, noi averenostro proprio fabbricatovain Dongguan. Sottoio volutopiace per introdurre Di Più dettagli di illatomontatobicchiererubinetto per il tuorevisione.

Specifiche del prodotto

Nome del prodotto	Rubinetto in vetro montato lateralmente
Materiale	304SS / 316SS / 316LSS / Duplex 2205
Finitura superficiale	Specchio / Satinato / Nero opaco
Per lo spessore del vetro	10-13,52 mm
Applicazione	Recinzione per piscina, recinzione per balcone
Altri tipi di montaggio verticale	SBM / SCM RBM / RCM

Prodotto Spettacolo



Side Mounted Glass Spigot



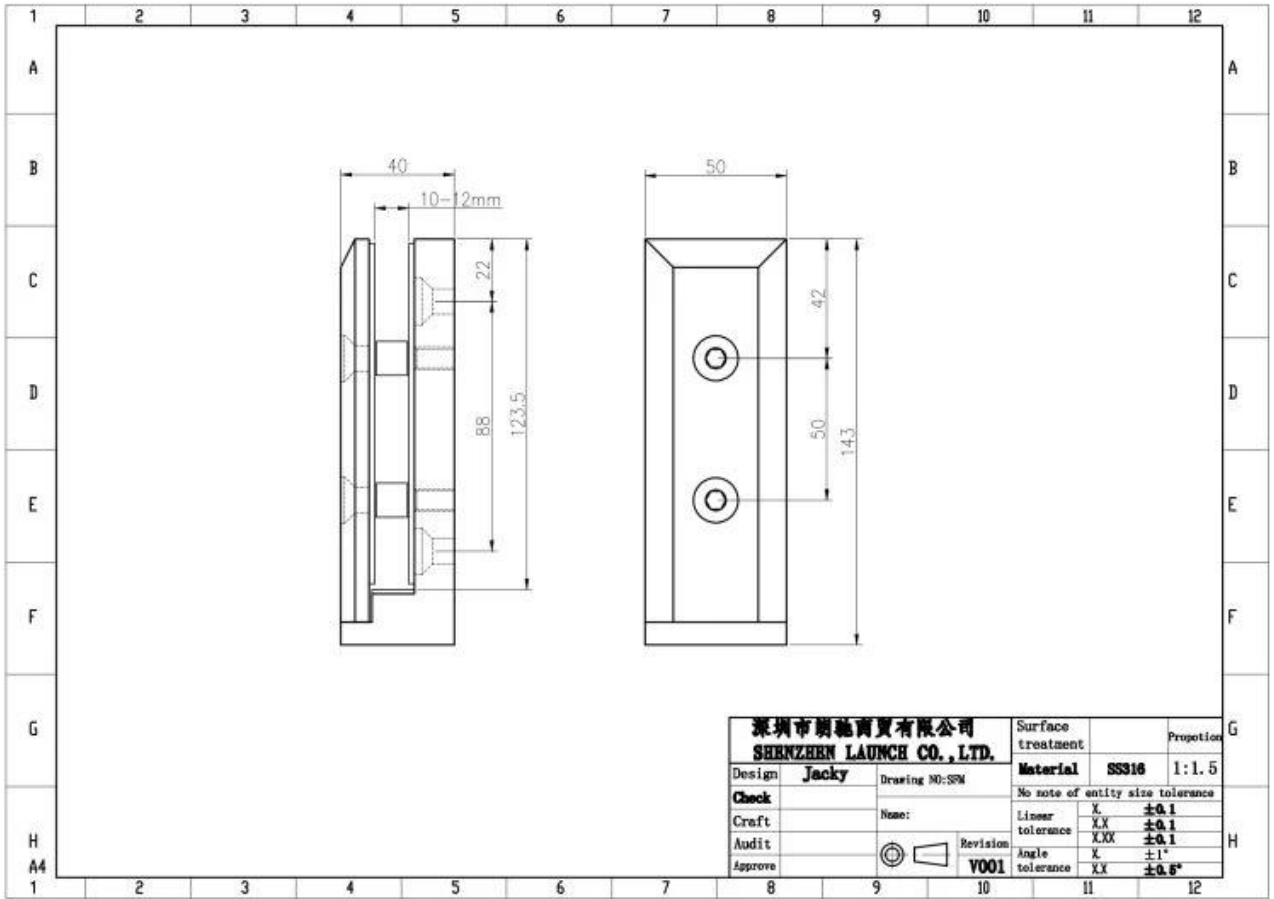
Esploro Visualizza



MassaProduzione



TecnicoDisegno



ComePerAssemblare



With the front face plate removed, level or align the Clamps to your design plan, taking into account the spacing recommendations and weight limitations shown on the back of this page. Be sure to secure the Clamps to an engineered and approved substrate with appropriate fasteners. You can fabricate the glass ahead of time, however, we recommend calculating hole locations after the Clamps are installed to account for any clamp movement.



Check the layout of the Clamps for alignment, then do a layout for fabricating holes in the glass to meet the installed measurements and spacing between glass panels.



Place the gaskets against the base fitting, both back and bottom lip, then set the glass panel on the base fitting. Next place the front gasket against the glass panel along with the front plate and secure to the base fitting by tightening the two screws. Don't tighten all the way, leave enough play to adjust the glass panel.



After you have achieved the proper alignment tightly secure the front plate screws to finish the installation. Clean the glass and view from a distance to determine if everything matches up and looks good. Adjust if necessary.

ProgettoFoto







Altrotipiverticalemontatobicchiererubinetto

Finitura superficiale a specchio



Finitura superficiale satinata



Finitura superficiale nera opaca



Non esitate a contattarci quando avete domande per loro.

All'attenzione di: Frank Fang

Telefono: +8615906261741

E-mail: sales02@launch-china.cn