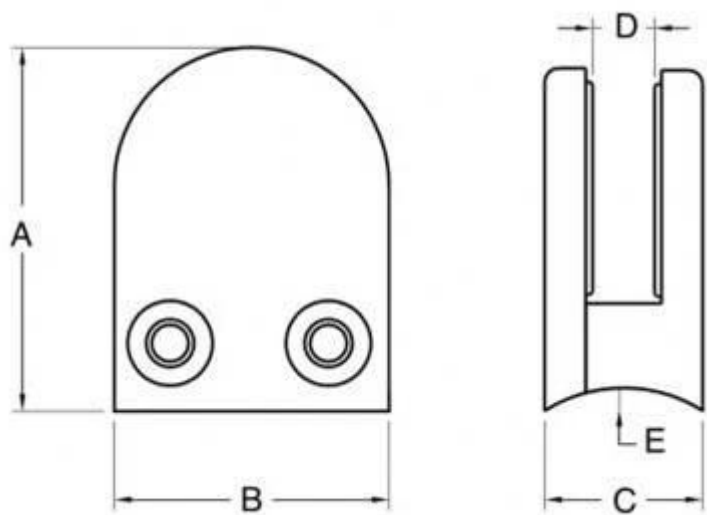


morsetto di vetro SS316 per ringhiera in vetro



**G106**

Materiale: acciaio inossidabile 304/316  
finitura: raso o MirroR lucido  
per spessore del vetro: 8-12mm

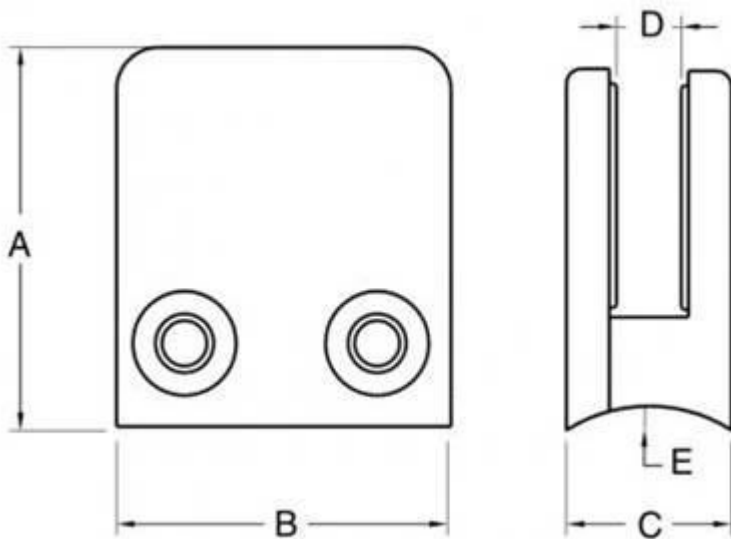


| Modello numero: | UN | B  | C  | D  | E      |
|-----------------|----|----|----|----|--------|
| G106            | 50 | 40 | 25 | 11 | 0      |
| G106R           | 52 | 40 | 25 | 11 | R-21.5 |



**G102**

materiale: Acciaio inossidabile 304/316  
finire: Raso o lucidato a specchio



| Modello numero: | UN | B  | C  | D  | E      |
|-----------------|----|----|----|----|--------|
| G102            | 44 | 44 | 25 | 11 | 0      |
| G102R           | 48 | 44 | 25 | 11 | R-21.5 |



