

Descrizione

- Per 10-12mm di vetro temperato
- Dimensioni corrimano: 25x20mm, groove 14x14mm, 5,8 metri per lunghezza o secondo il vostro requisito, spessore 1,2 mm
- Peso netto: 6kg/5,8 m
- Plastica canale: 2.9 m per lunghezza o secondo il vostro requisito
- Finitura: 8K polacco /satin
- Per sia commercial che il design per la casa casa moderna
- Per il commercio all'ingrosso e al dettaglio (siamo fabbrica)
- Applicazione: balcone ringhiera ringhiera vetro, ringhiera della scala, corrimano, balaustra in vetro, ringhiera di vetro frameless
- Campione: sempre disponibile

Un insieme di corrimano tubo e raccordo

20*25mm slot handrail

5.8 m per length



180 degree joiner



90 degree joiner



Vertical adjustable joiner



Horizontal I adjustable joiner



Wall to handrail joiner



End cap



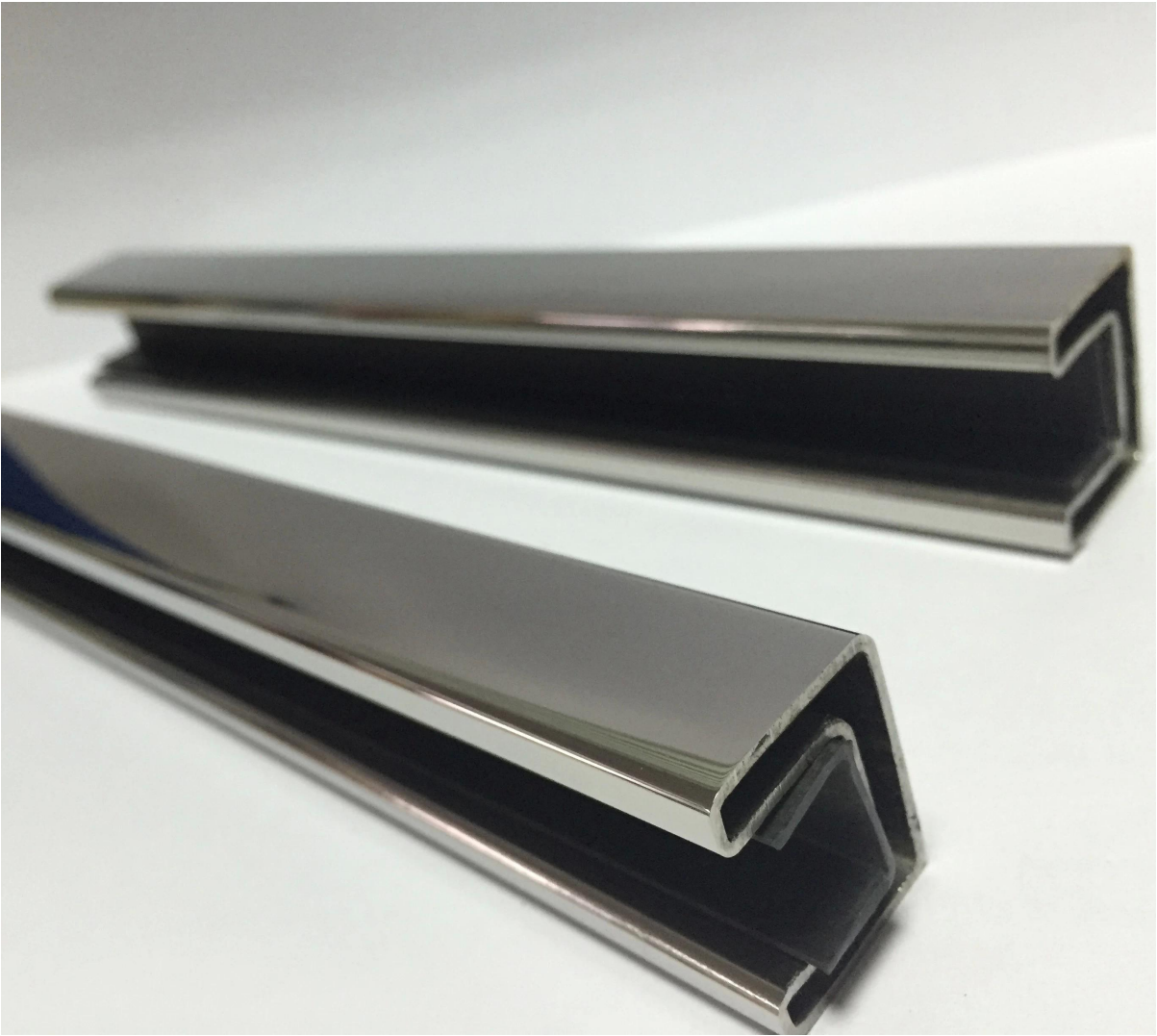
Dettagli













Progetto

[Spina di vetro](#)+ slot corrimano design



Per le foto di progetto più beautiful, andare [QUI](#)









Imballaggio & consegna

Pacchetto di manica di sicuro cardbord







packing	plastic bag+box+carton
production lead time	30-45 days ; also depending on your qty.
Shippment	 
	 
	 
payment	 

Fabbrica & certificazione









ISO
9001:2008
REGISTERED



Shenzhen Launch Co.,Ltd



www.launch-china.cn

Clienti



Why choose Launch--advantages
1. Various ranges of items for your selection
2. Provide professional services (3D & AUTOCAD)
3. Special designs by customer can be made
4. Competitive price with good discount
5. Superb quality control, production inspected one by one
6. Timely delivery, usually within a month
7. Good service before, during and after sales
8. OEM, ODM available

Grazie per la visita!

Bisogno di un preventivo o qualsiasi domanda, si prega di lasciare un messaggio, risponderemo al più presto!

O contattarmi come sotto le info.

KEBIL 科比奥®

深圳市朗驰商贸有限公司
SHENZHEN LAUNCH CO., LTD.

朗驰国际有限公司
LAUNCH INTERNATIONAL LIMITED.

董 萍 Doris Dong

Senior Sales Representative

☎ (86) 135 3050 6265

深圳市南山区南山大道1092号亿利达大厦B区3栋5003

Room 5003, Building 3, Yilida Building, No.1092
Nanshan Road, Nanshan District, Shenzhen, China
postal code 518054

☎ (86-755) 8603 7559

☎ (86-755) 8637 2611

✉ sales04@launch-china.cn

🌐 www.launch-china.com

www.chinabalustrade.com