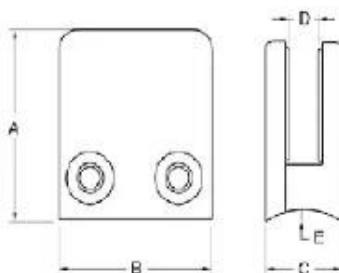


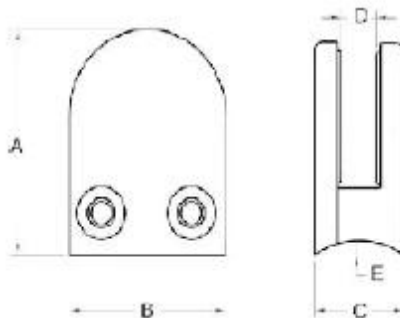
In acciaio inox morsetto di vetro D per balaustra di vetro

Material	Stainless steel 304/ 316
Finish	satin / mirror polished



Model No.	A	B	C	D	E
G102	44	44	25	11	0
G102R	48	44	25	11	R-21.5

Material	Stainless steel 304/ 316
Finish	Satin / mirror polished
For glass thickness	6mm -13.52mm



Model No.	A	B	C	D	E
G103	50	40	22	8	0
G104	50	40	26	12	0
G105	55	45	28	14	0
G103R	52	40	22	8	R-21.5
G104R	52	40	26	12	R-21.5
G105R	58	45	28	14	R-25.4

Morsetto quadrato di vetro per 8-10 mm (5/16 " - 3/8 "), lo spessore del vetro



G102



Raggio indietro (per palo tondo)



Lato Retention morsetto di vetro piatto di vetro pendenza



G106