

balaustre in acciaio inox top rotaie per il vetro 8-13.52mm

1. stainless balaustre in acciaio rotaie top descrizione,

Materiale: acciaio inox 304/316 / 316L

Finire: Spazzolato o lucidato a specchio

Per lo spessore del vetro : spessore 8-13.52mm

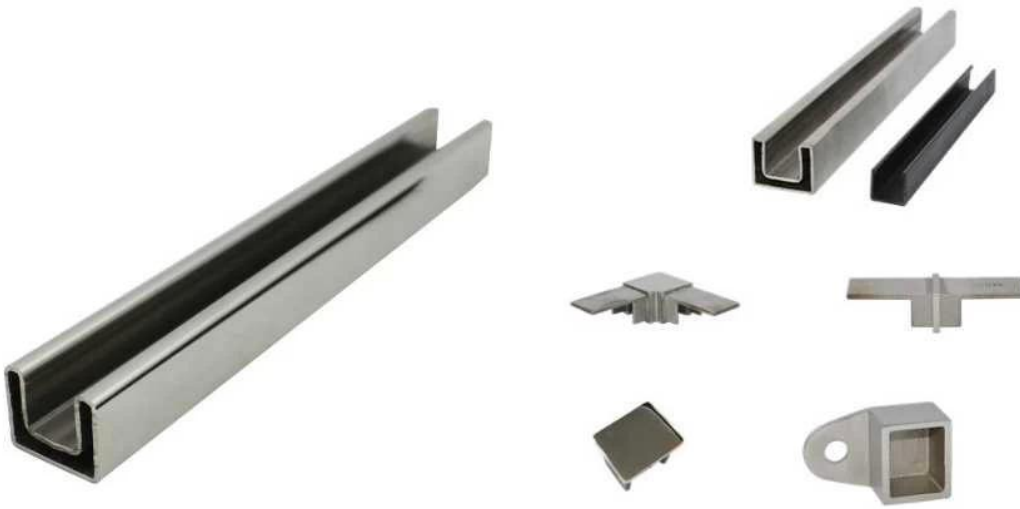
Dimensione: forma quadrata, 25 * 20mm, scanalatura 14 * 14mm,

5,8 metro per lunghezza, o secondo il vostro taglio requisito in sezioni



2. balaustre in acciaio inox barre superiori e raccordi dettagli:

Slot handrail and fittings



Square slot handrail series

balaustre in acciaio inox barre superiori raccordi foto,

90 degree Corner connector



180 degree middle connector



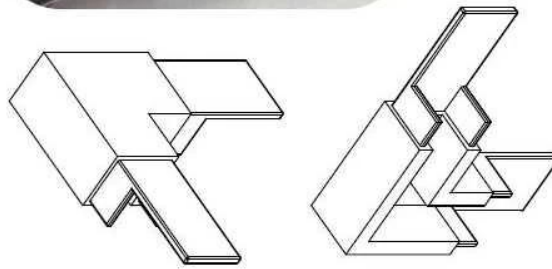
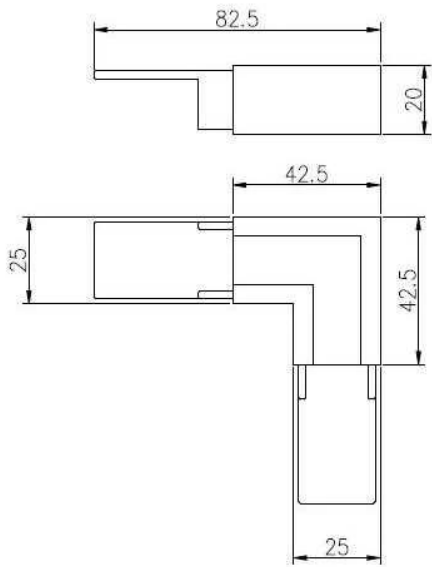
End Cap



Wall Bracket

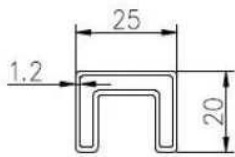


90 degree connector drawings

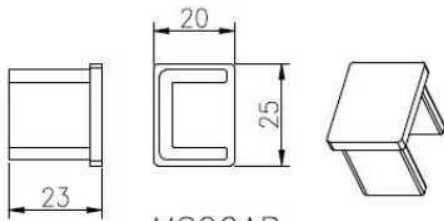
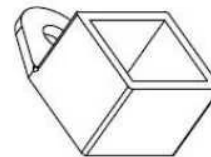
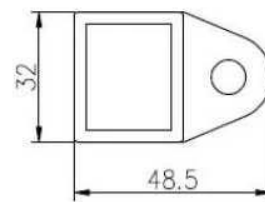
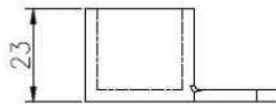


MSQC90

Slot tube handrail + end cap + wall bracket connector drawings



25*20 tube



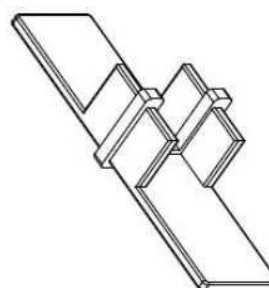
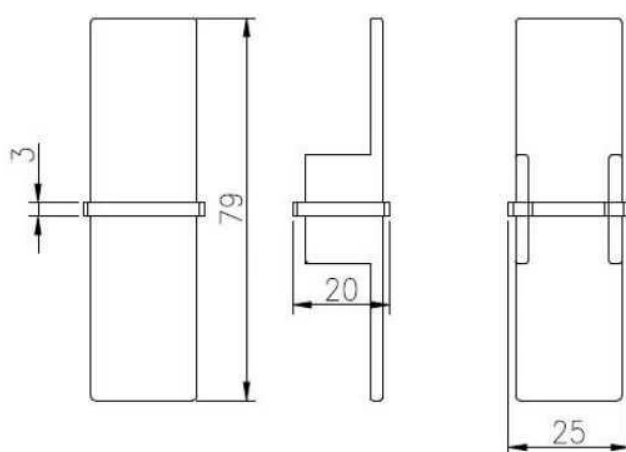
MSQCAP



MSQCW



180 degree connector drawings



MSQC180

3. balaustre in acciaio inox top rotaie progetto:







4. rotonda di diametro 25,4 mm forma balaustre in acciaio inox top rotaie.



KEBIL 科比奥™

ISO
9001:2008
REGISTERED

Factory Audit



mini top rail



square top raip fittings



www.launch-china.cn

Grazie per la vostra visita, qualsiasi interesse o necessità, si prega di contattare con me liberamente:

Joey Lan

Shenzhen lancio Co., Ltd

www.launch-china.com www.launch-china.en.alibaba.com www.chinabalustrade.com

E-mail: sales02@launch-china.cn.

Skype: lancio-02. Ufficio: 86-755-86037559.