

316L roestvrijstalen kegellijst rail leuningen voor raamloos glazen railsysteem (zwembad, balkon trap glazen rails)

1. Specs voor 316L roestvrij stalen kappende rail leuning buizen

- vierkante capping rail 21x25mm, met 14x14mm sleuf, met kunststof kanalen voor 10-12mm dikte glazen panelen
- ronde capping rail 25,4mm diameter, met 14x14mm sleuf, met kunststof kanalen voor 10-12mm dikte glazen panelen
- 5,8 meter per lengte
- verpakt in kartonnen buizen
- spiegel of satijnafwerking

2. Foto's voor 316L roestvrijstalen capping rail handrail buis

KEBIL 科比奥®



20*25mm slot handrail

5.8 m per length



180 degree joiner



90 degree joiner



Vertical adjustable joiner



Horizontal adjustable joiner



Wall to handrail joiner



End cap



KEBIL 科比奥®





3. Foto's verpakken voor 316L roestvrijstalen capping rail handrail buis



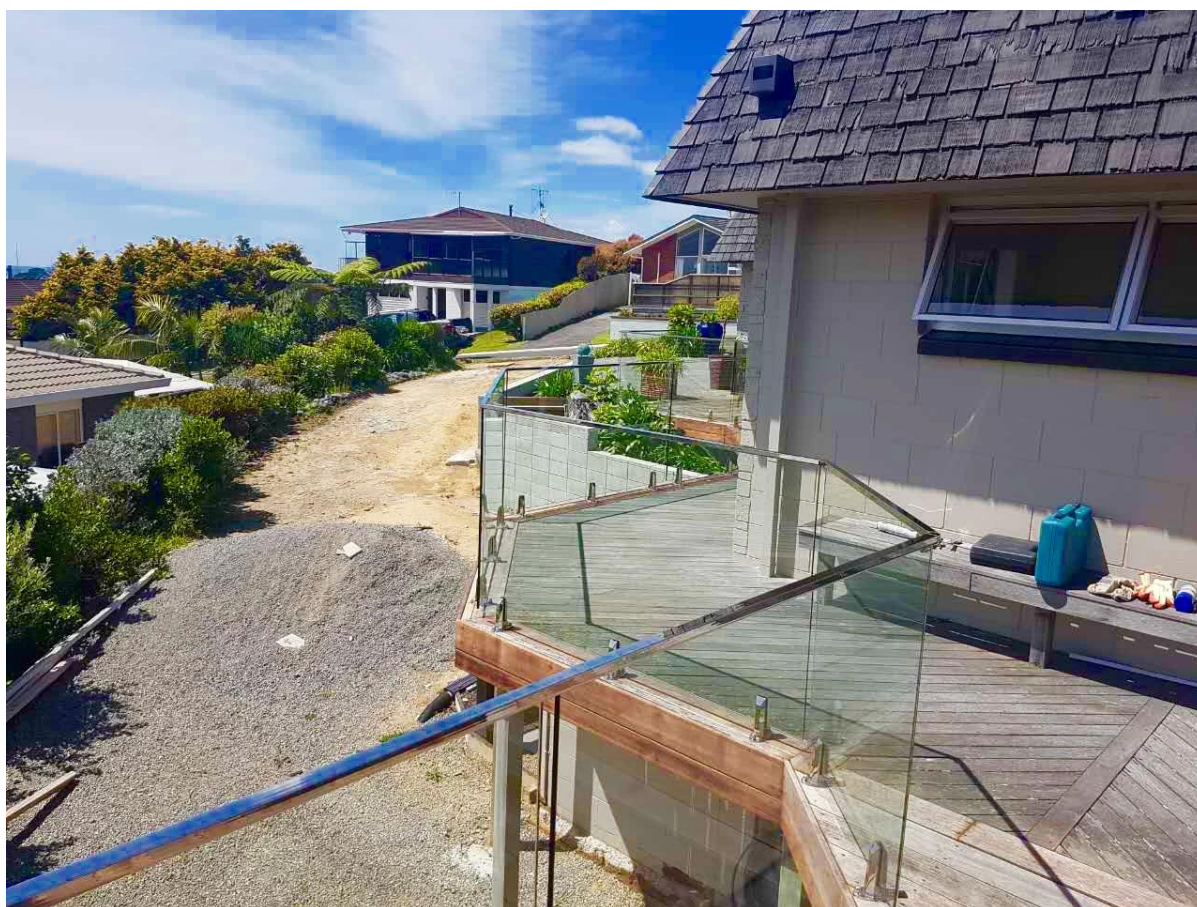






4. Project foto's voor 21x25mm roestvrij stalen slang leuning en toebehoren





Bedrijfsinfo. voor SHENZHEN LAUNCH CO., LTD

Shenzhen Launch Co., Ltd was established in 2004, located at Nanshan District, Shenzhen, and one hour by car from Hongkong International Airport. Our main product is high-grade building materials includes stainless steel balustrade post, staircase handrail, balcony guardrail, swimming pool fence and other high-grade building materials. All the products are designed strictly according to the high-end market requirements. We have our own factory in Tangxia Town, Dongguan, has a variety of precision equipment more than 50 sets: CNC lathe, milling machine, punching machine, pipe cutter, argon welder, drilling machine, polisher, etc. which can provide customers with complete product processing services. With the German SPECTRO Spectrometer, we insist on testing every batch of materials to ensure that the material is highly qualified. We also have hardness gauge, secondary element and other test equipment to ensure the products meets customers' requirements.

ABOUT US

Our Team



OUR ADVANTAGE

Please do not hesitate to contact us if you have any requirement regarding our production lines, you can expect a timely reply with professional solutions!



Own factory, shortest lead time.



Can help customers design product drawings based on customer ideas and design engineering installation drawing according to the customer site sketch.



Sample order, trial order acceptable.



Provide material test report to ensure that the material is qualified.



13 years of industry experience, we can help customers recommend the best solution to help customers save cost.

OUR FACTORY

More than 13 years experience in hardware industry design and processing, we can provide customized services from design to the sample and small batch trial production.



PRODUCTION PROCESS



Casting



CNC lathe



CNC Milling



Stamping



Drilling & Tapping



Polishing

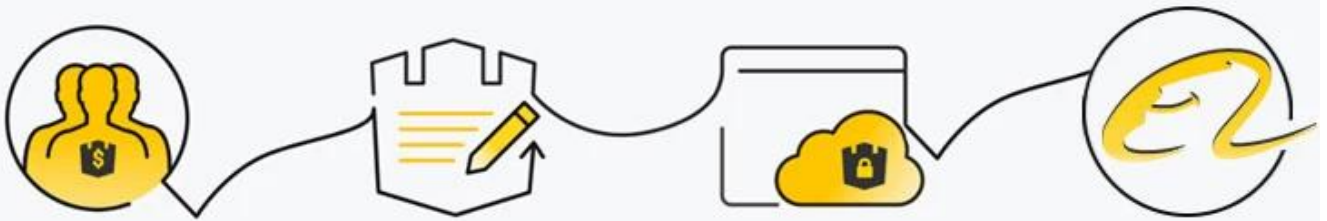


PACKAGING & DELIVERY



PAYMENT & TRANSPORTATION

Welcome Alibaba Trade Assurance Order!



- 1 Start an order
- 2 Negotiate terms with our sales service & confirm order
- 3 Make payment
- 4 Alibaba provide full assurance



CONTACT US

WELCOME TO CONTACT US. WE WILL DO OUR BEST TO HELP YOU!



CELIA CHEN



Email : sales01@launch-china.cn



Skype : launch-01



Mob. 86-13590273543



FAQ

1. Welke materialen heb je?

We hebben materialen in SS304, SS316, SS316L, Duplex 2205, enz.

2. Kunt u mij uw hele prijslijst sturen?

Sorry, omdat de prijs betrekking heeft op veel factoren, zoals hoeveelheid, materiaaltype, oppervlaktebehandeling enzovoort, bieden we u een exacte offerte aan, nadat we uw gedetailleerde eisen hebben bevestigd.

3. Biedt u OEM & ODM service?

Ja, wij kunnen OEM & ODM service om de producten volgens uw technische tekeningen of monsters te maken, zijn wij professioneel in het investeren van casting, sterven casting, stampen, CNC bewerking, enz.

4. Welk soort betaling accepteert u?

Wij accepteren betaling via T / T, L / C, PayPal, West Union, enz.

5. Wat is uw betalingstermijn?

Onze betalingstermijn is TT (30/70) of LC op zicht.

6. Wat is uw levertijd?

Onze levertijd is binnen 5 werkdagen voor hot-sale items, 15-25 werkdagen voor batch orders.

7. Biedt u service na verkoop aan?

Natuurlijk, elke vraag na aankoop van onze producten, zullen we binnen 24 uur terug naar u binnenkomen.