

Poederbekleding gebrek aan kleur stalen handrails voor trapbuitenshuisofindoorgebruik. Alle benodigde beugels / schroeven worden verstrekt.

Toegang voor stalen handrails-

Trap Leuning Middle Rail to Post Bracket -



Trap leuning middenbalk, 32 * 32mm -



Trap Leuning Post 40 * 40mm-



Trap Top Leuning Tube-



Na het in elkaar zetten-



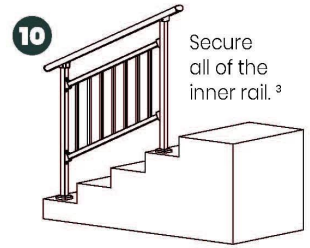
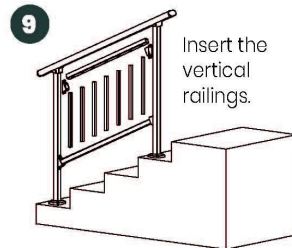
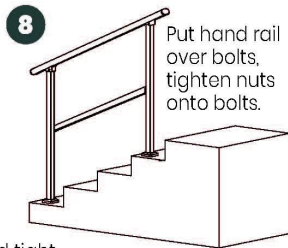
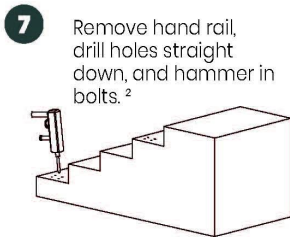
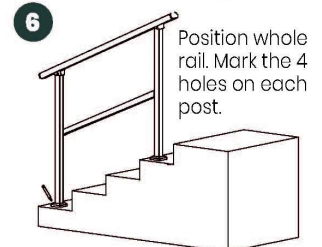
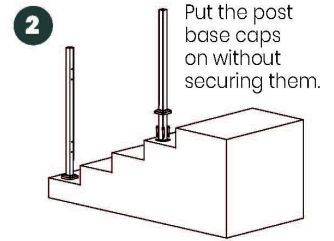
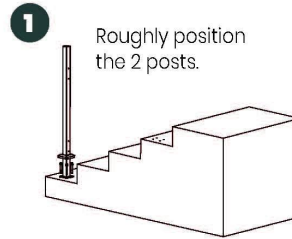
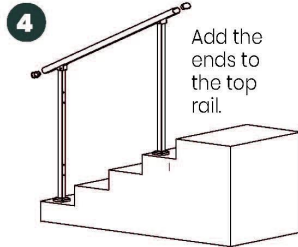
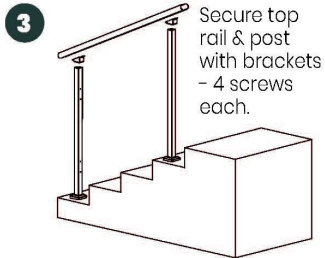


Installatiegidsen-

Guard Rail Assembly Instructions

Tools Required: Electrical Power Drill
(Impact Drill Preferred)

Overview: Assemble the rail and position it before marking holes for drilling. Improper installation can lead to failure of rail system or injury.



² Double check posts are parallel and tight against inside rail before marking holes for drilling.

¹ Inside rail will be loose until each post is secured to the ground.

³ Push and pull top rail & inside rail to ensure all is secure.



