

FABRIEK Prijs Directe Verkoop Outdoor 2-3 Stappen Past Zwart Smeedijzeren Leuning Kit Trapleuning balustrades & leuningen

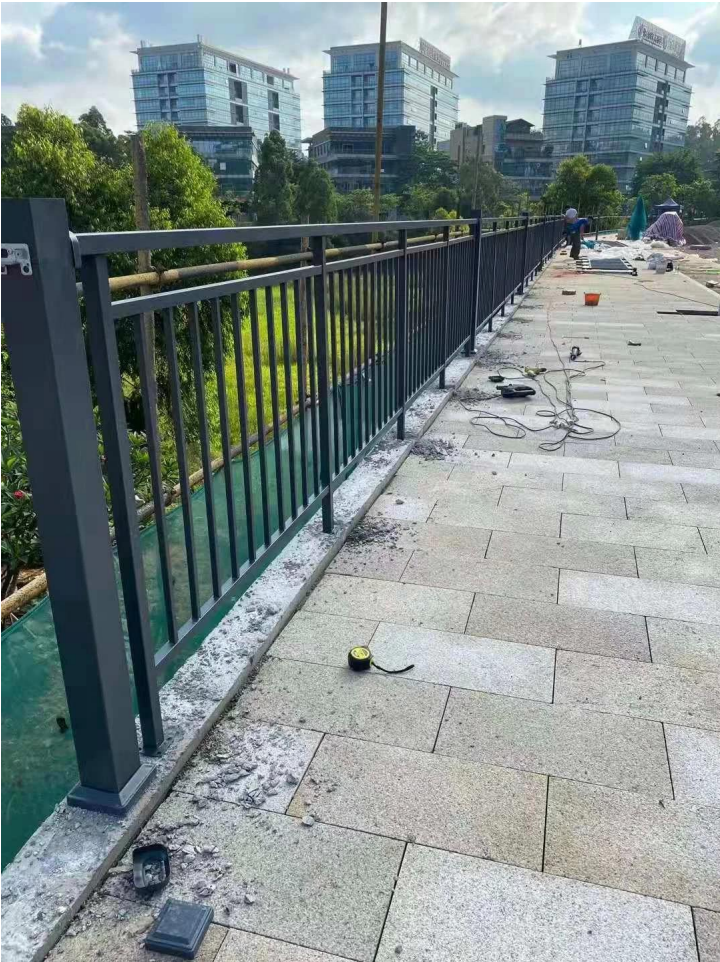
productnaam	Gegalvaniseerde stalen reling	Normale maat	H 1,1 M*B 1,2 M
Grens hoog	2 M	Buisdikte	1,2-2,5 mm
Startbatch	20 m of 20□	Plaats van product	Provincie Guangdong, China
Materiaal	Staal	Berekeningsmethode voor de eenheidsprijs	Hoogte onder 1,2 m in meters, Hoogte boven 1,2 m in vierkant
Ambacht	gemonteerd en gelast	Oppervlakte behandeling	Gepoedercoat











Montage:



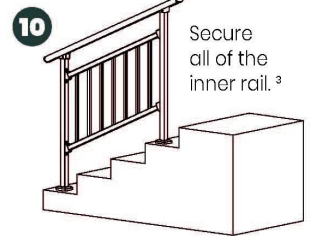
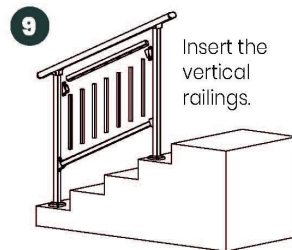
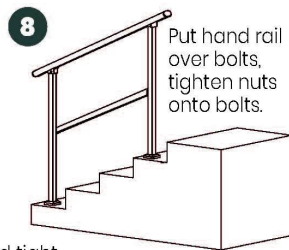
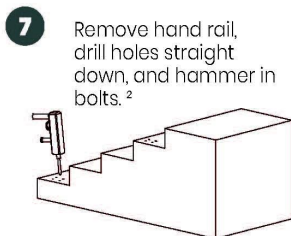
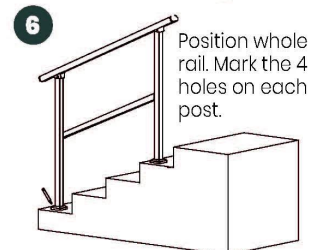
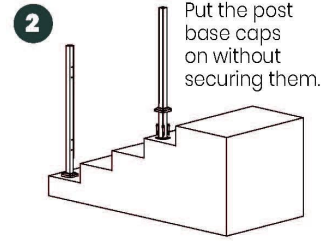
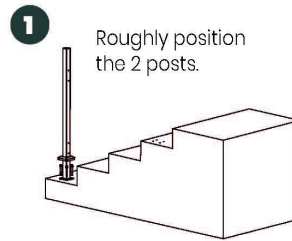
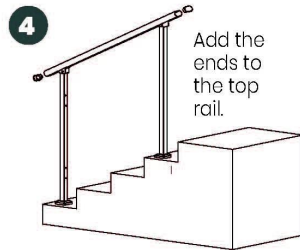
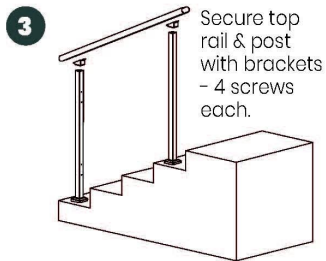


Installatiehandleidingen:

Guard Rail Assembly Instructions

Tools Required: Electrical Power Drill
(Impact Drill Preferred)

Overview: Assemble the rail and position it before marking holes for drilling. Improper installation can lead to failure of rail system or injury.



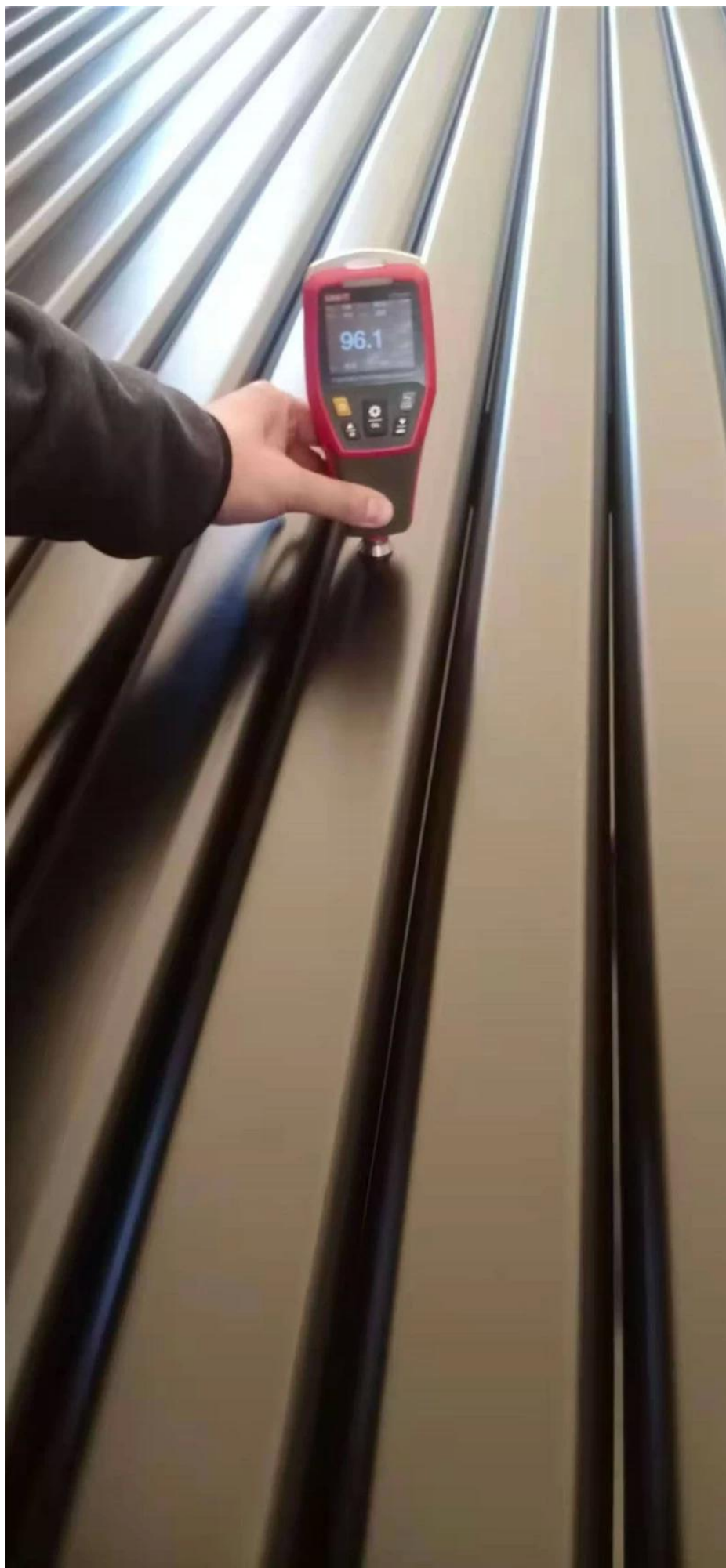
² Double check posts are parallel and tight against inside rail before marking holes for drilling.

¹ Inside rail will be loose until each post is secured to the ground.

³ Push and pull top rail & inside rail to ensure all is secure.

Productie & verpakking van trappenhuis staal leuningen bij ons werkplaats:









Alsjeblift gevoel vrij naar contact ons voor meer details:

Contact: Wendy

E-mail: sales04@launch-china.cn

HP/WhatsApp: 86159 8933 9827