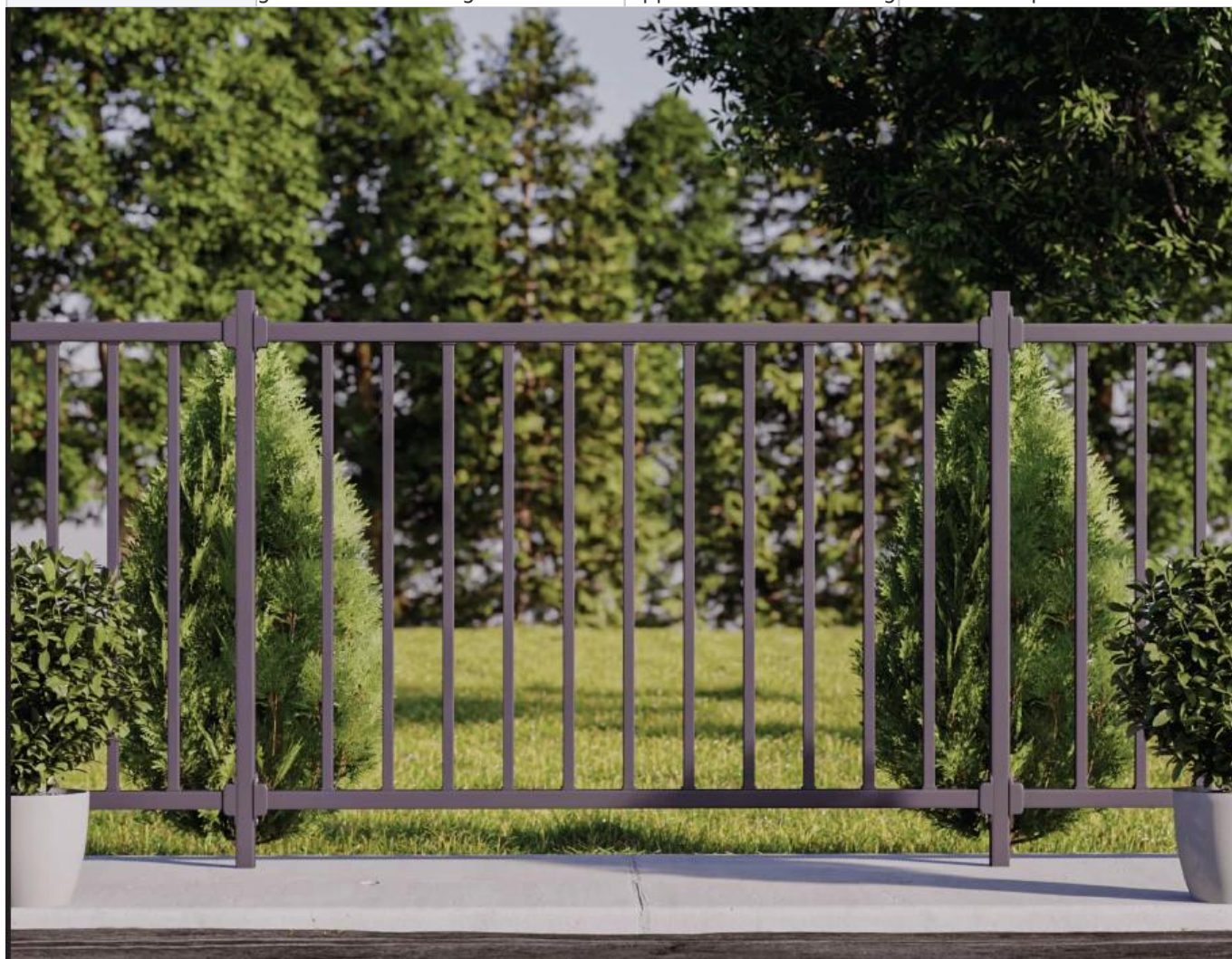
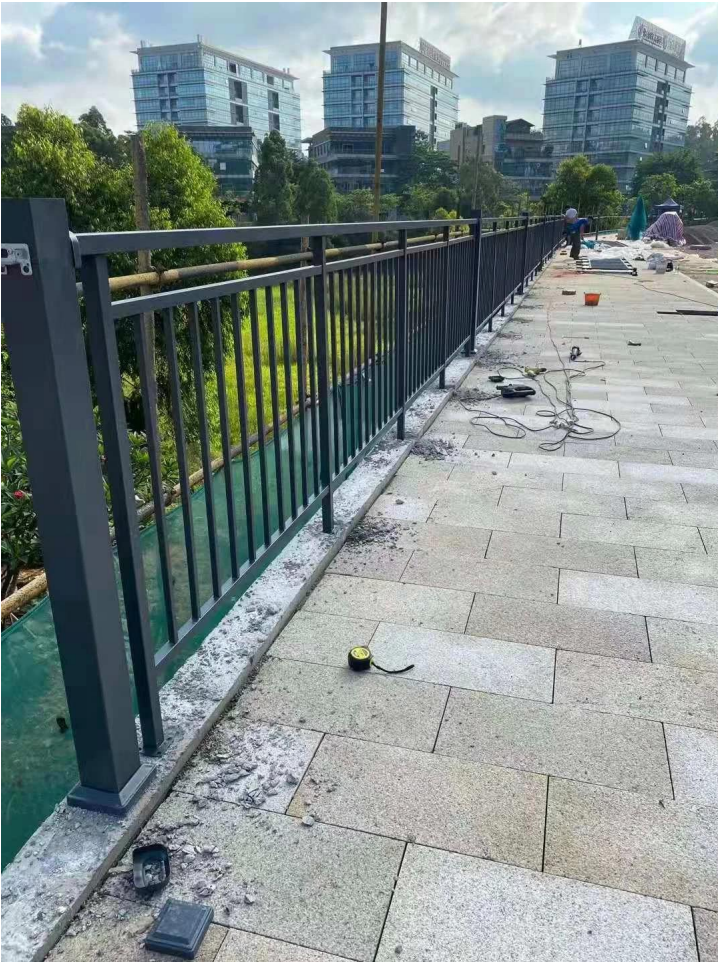


## Gegalvaniseerd ijzeren leuningen antieke poedercoating balkonleuningontwerpen gegalvaniseerde stalen vloer gemonteerde leuningen

productnaam	Gegalvaniseerde stalen reling	Normale maat	H 1,1 m*W 1,2 m
Beperk hoog	2 m	Buisdikte	1.2-2,5 mm
Startbatch	20 m of 20□	Plaats van product	Provincie Guangdong, China
Materiaal	Staal	Prijsberekeningsmethode voor eenheid	Hoogte onder 1,2 m in meters, hoogte boven 1,2 m in vierkant
Ambacht	geassembleerd en gelast	Oppervlakte behandeling	Bedekt met poeder







**Montage:**



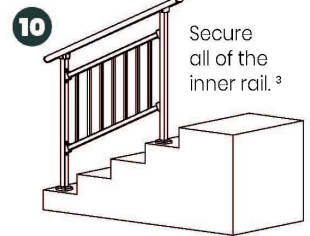
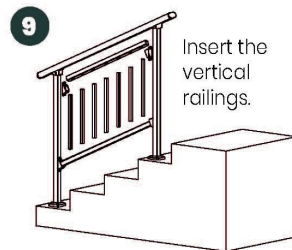
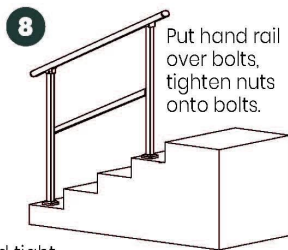
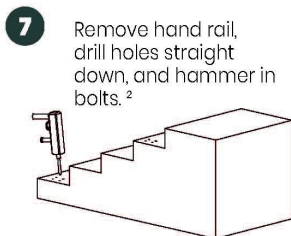
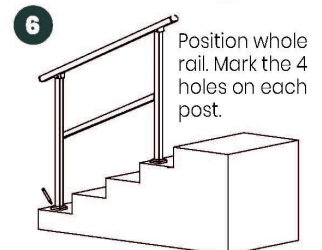
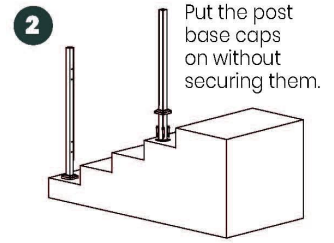
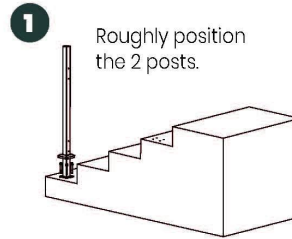
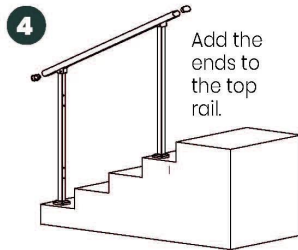
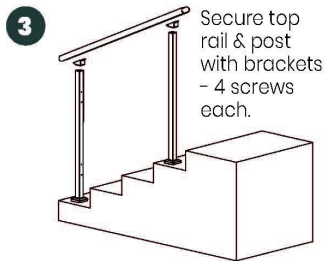


**Installatiegidsen:**

# Guard Rail Assembly Instructions

**Tools Required:** Electrical Power Drill  
(Impact Drill Preferred)

**Overview:** Assemble the rail and position it before marking holes for drilling. Improper installation can lead to failure of rail system or injury.



<sup>2</sup> Double check posts are parallel and tight against inside rail before marking holes for drilling.

<sup>1</sup> Inside rail will be loose until each post is secured to the ground.

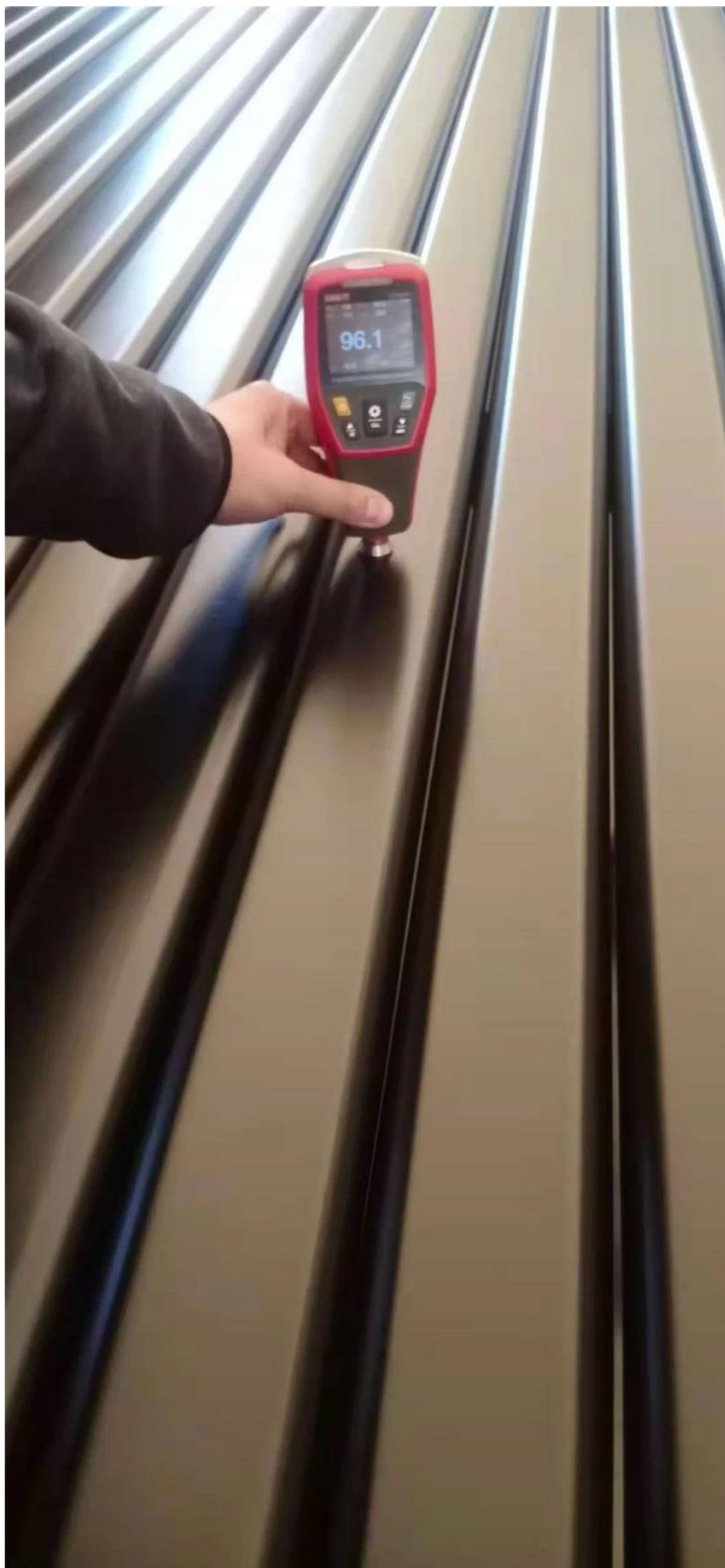
<sup>3</sup> Push and pull top rail & inside rail to ensure all is secure.

**Productie&verpakkingvantrappenhuisstaalleuningenvanBijons Workshop:**



**KEBIL®**

SHENZHEN LAUNCH CO., LTD









**Alsjeblieftvoelenvrijtotcontactonsvoormeerdetails:**

**Contact:Vooravond**

**E -mail:sales03@launch-china.cn**

**HP/WhatsApp:+8613686807796**