

## Glazen steun RVS Balustrade LCH-104

description

Materiaal: roestvrij staal 316

Afwerking: spiegel / satijn

Post wanddikte: 1,5 mm of volgens uw vereiste

Post-formaat: 50x50mm, 1100mm hoog of volgens uw vereisten

Model: roestvrij stalen vierkante paal voor vloerbevestiging (vloer kan hout of beton zijn)

Toepassing: zwembad hek, balkon rvs balustrade ontwerp, tuin glazen balustrade, rvs balustrade, glazen balustrade, semi-frameloze glazen hek, trap glazen balustrade, dek vloer gemonteerde glazen balustrade, sterke veilige zware post hek

Voor zowel veilig commercieel als modern huisontwerp

Voor zowel groot- als kleinhandel (wij zijn fabrikant)

Sample is altijd beschikbaar

Afbeeldingen:



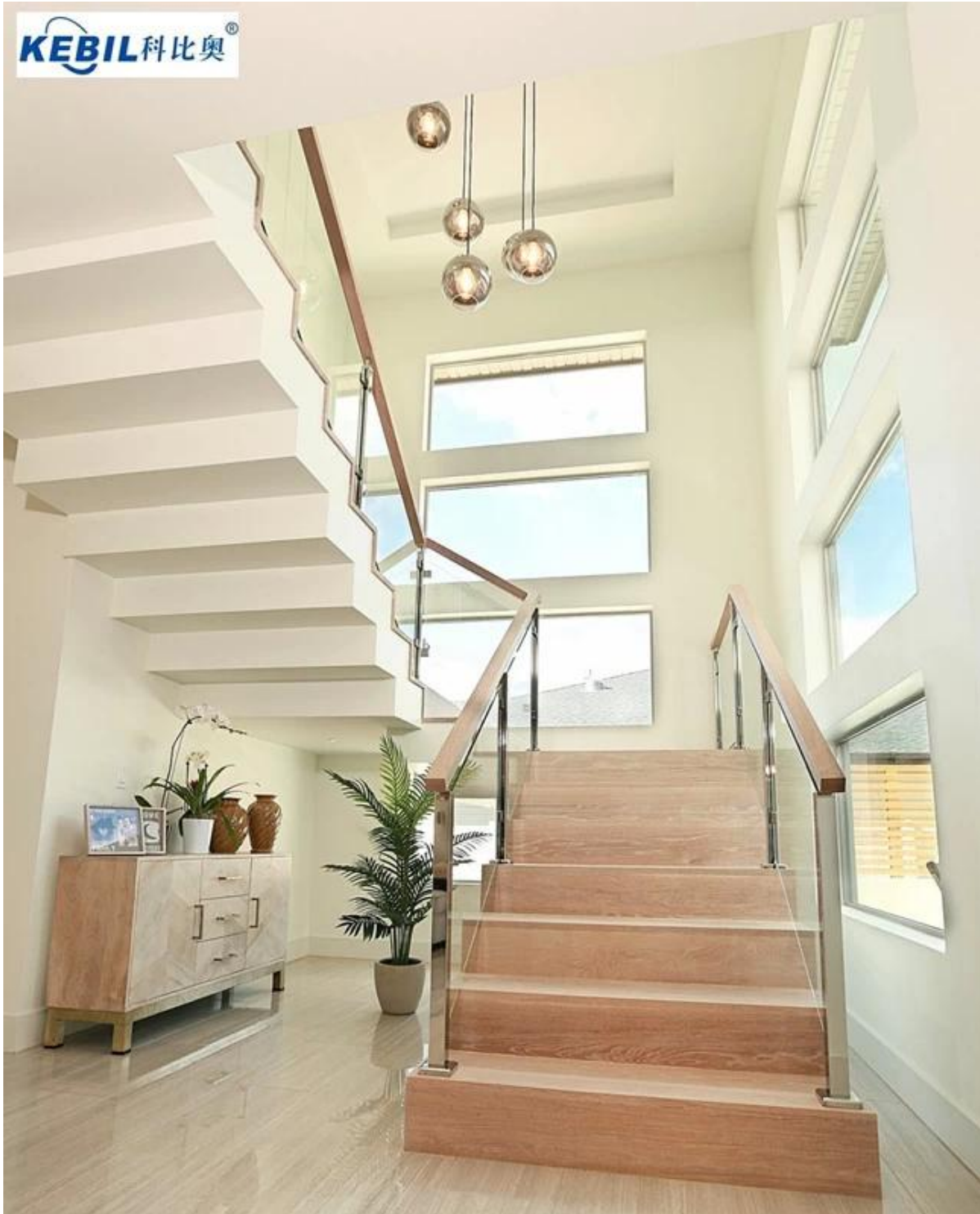


**LCH-104**



**Glazen steun RVS balustrade voor modern trapdesign**





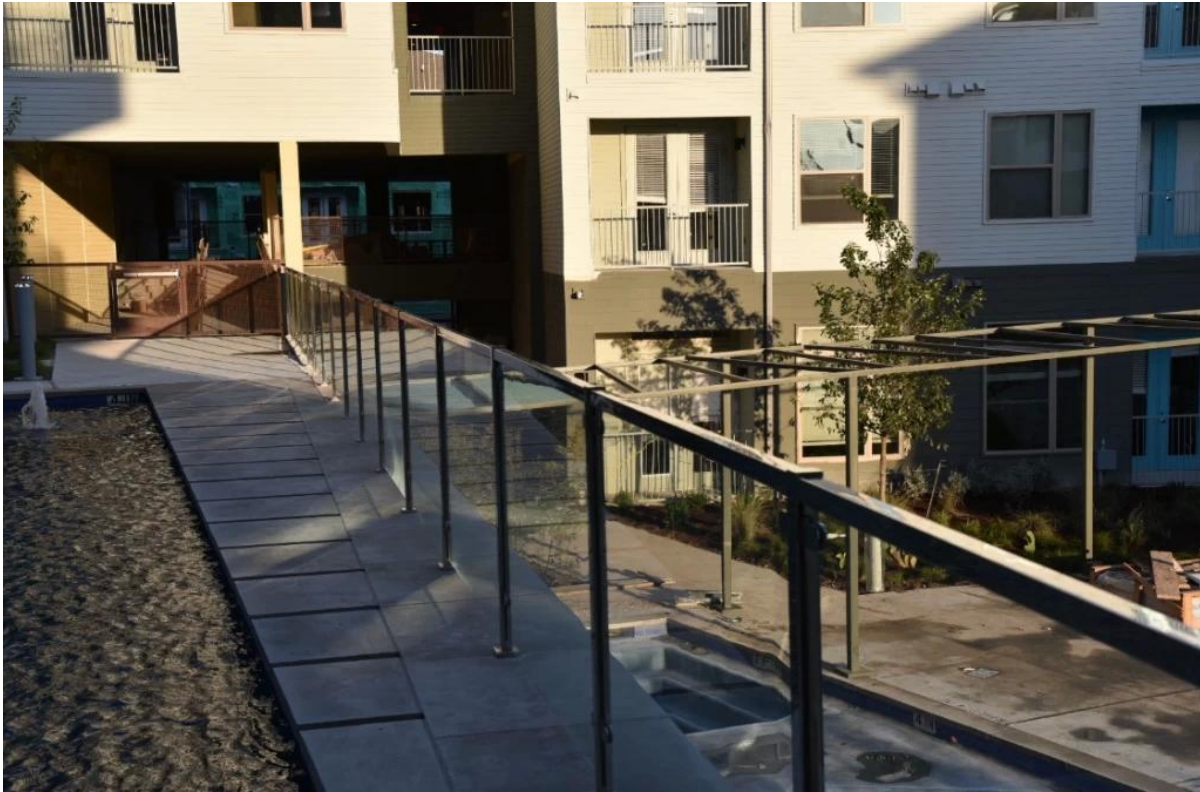
**50x50 vierkante glazen steun van roestvrij staal balustrade voor reling van het dek:**



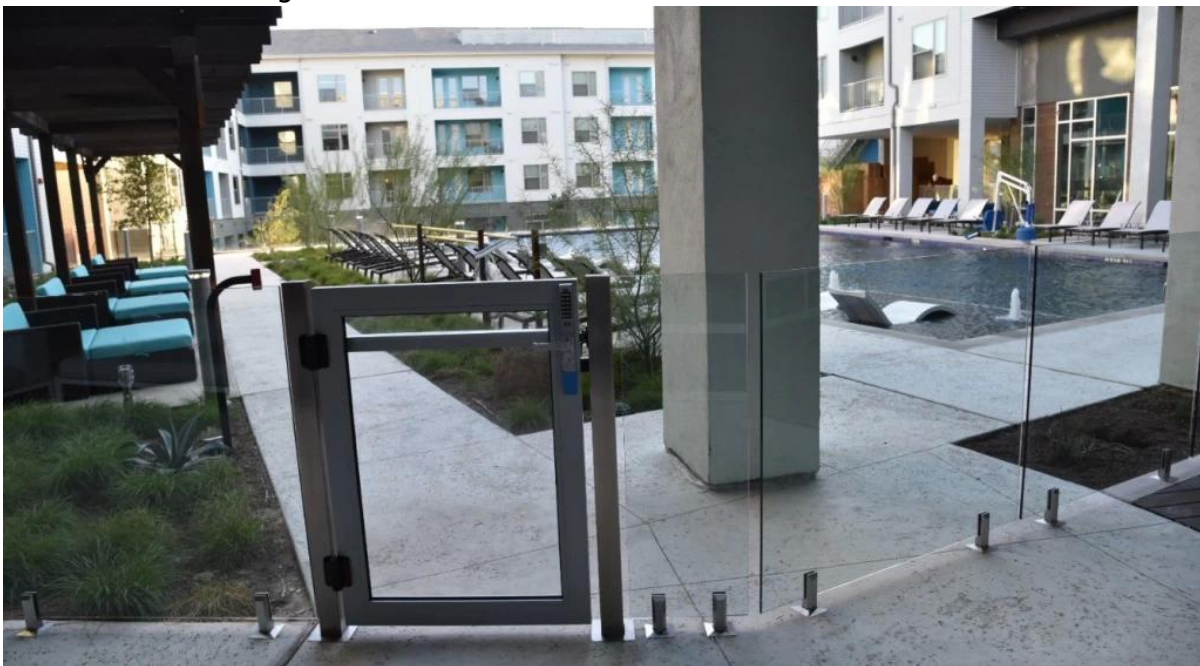
**50x50 vierkante glazen steun roestvrij staal balustrade ontwerp voor zwembad schermen:**



**80x80mm vierkante roestvrij stalen paal met leuning ontwerp voor commercial veilige glazen reling**



80x80 mm vierkante paal en glas [klink](#), [scharnier](#) ontwerp voor veilig hek voor zwembadomheiningen



### Bezorging & Inpakken

- Levering: 3-5 dagen per expresse. 10-15 dagen over zee.
- Verpakking: één pc in één plastic zak en vervolgens in één doos.
- Regelmatige doorlooptijd: ongeveer 20 dagen na betaling. (Het is afhankelijk van de hoeveelheid)









Bedrijfsinformatie:

Shenzhen Launch Co., Ltd was established in 2004, located at Nanshan District, Shenzhen, and one hour by car from Hongkong International Airport. Our main product is high-grade building materials includes stainless steel balustrade post, staircase handrail, balcony guardrail, swimming pool fence and other high-grade building materials. All the products are designed strictly according to the high-end market requirements. We have our own factory in Tangxia Town, Dongguan, has a variety of precision equipment more than 50 sets: CNC lathe, milling machine, punching machine, pipe cutter, argon welder, drilling machine, polisher, etc. which can provide customers with complete product processing services. With the German SPECTRO Spectrometer, we insist on testing every batch of materials to ensure that the material is highly qualified. We also have hardness gauge, secondary element and other test equipment to ensure the products meets customers' requirements.

## ABOUT US



# OUR ADVANTAGE

Please do not hesitate to contact us if you have any requirement regarding our production lines, you can expect a timely reply with professional solutions!



Own factory, shortest lead time.



Can help customers design product drawings based on customer ideas and design engineering installation drawing according to the customer site sketch.



Sample order, trial order acceptable.



Provide material test report to ensure that the material is qualified.



13 years of industry experience, we can help customers recommend the best solution to help customers save cost.

# OUR FACTORY

More than 13 years experience in hardware industry design and processing, we can provide customized services from design to the sample and small batch trial production.



# OUR CERTIFICATE

With premium quality, competitive price and superior service, we won a lot of customers' favor.  
Our products are popular in North America, European and Australia.



# PRODUCTION PROCESS



Casting



CNC lathe



CNC Milling



Stamping



Drilling & Tapping



Polishing

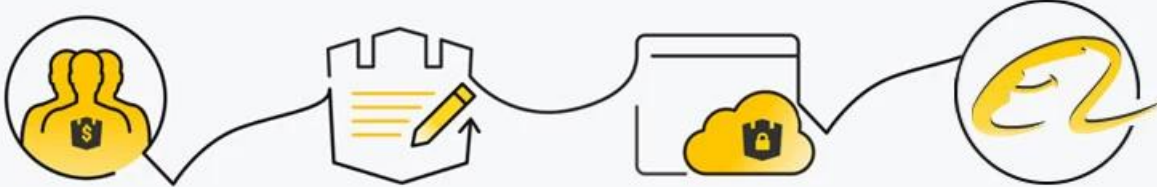


# **PACKAGING & DELIVERY**



# PAYMENT & TRANSPORTATION

Welcome Alibaba Trade Assurance Order!



1 Start an order

2 Negotiate terms with our sales service & confirm order

3 Make payment

4 Alibaba provide full assurance



Neem nu contact met ons op voor meer informatie.

E-mail: [sales03@launch-china.cn](mailto:sales03@launch-china.cn)

Mob / Whatsapp: +8615907334556