

Shenzhen Lanching Co., Ltd. gespecialiseerd in ontwikkelingen fabricage Hoog Rang Metaal Gebouw Materiaal sinds 2004, wij hebben onze eigen fabriek gelegen in Dongguan. Hieronder ik zou leuk vinden naar voorstellen meer detail over de kant gemonteerd glas kraan voor uw recensie.

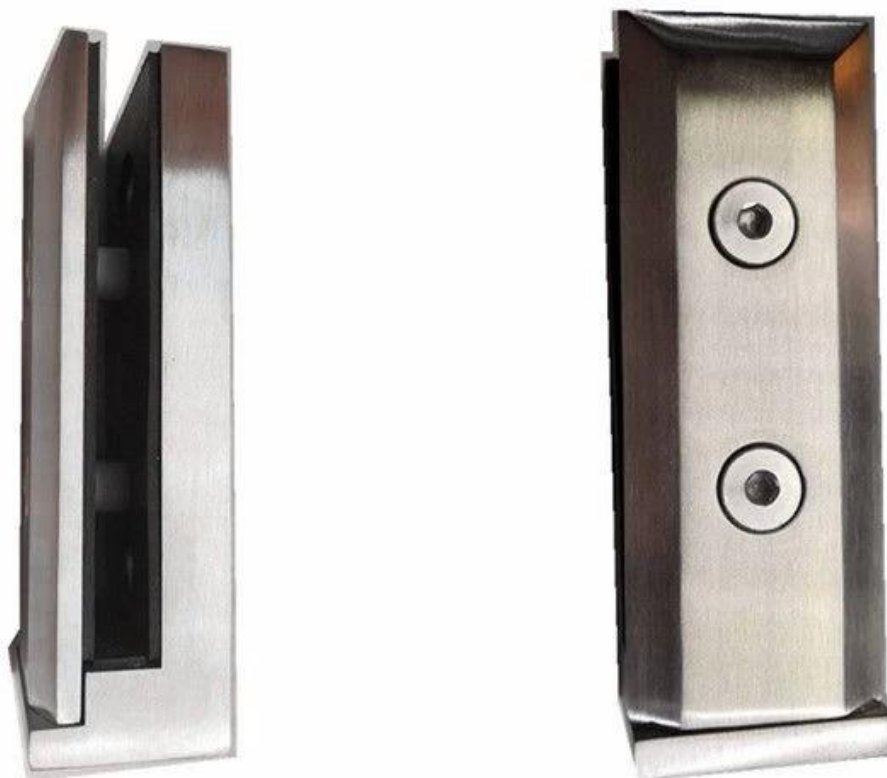
Productspecificaties

Productnaam	Aan de zijkant gemonteerde glazen kraan
Materiaal	304SS / 316SS / 316LSS / Duplex 2205
Oppervlakteafwerking	Spiegel / Satijn / Mat zwart
Voor glasdikte	10-13,52 mm
Toepassing	Zwembadhek, balkonhek
Andere soorten verticale montage	SBM / SCM RBM / RCM

Product Tonen



Side Mounted Glass Spigot



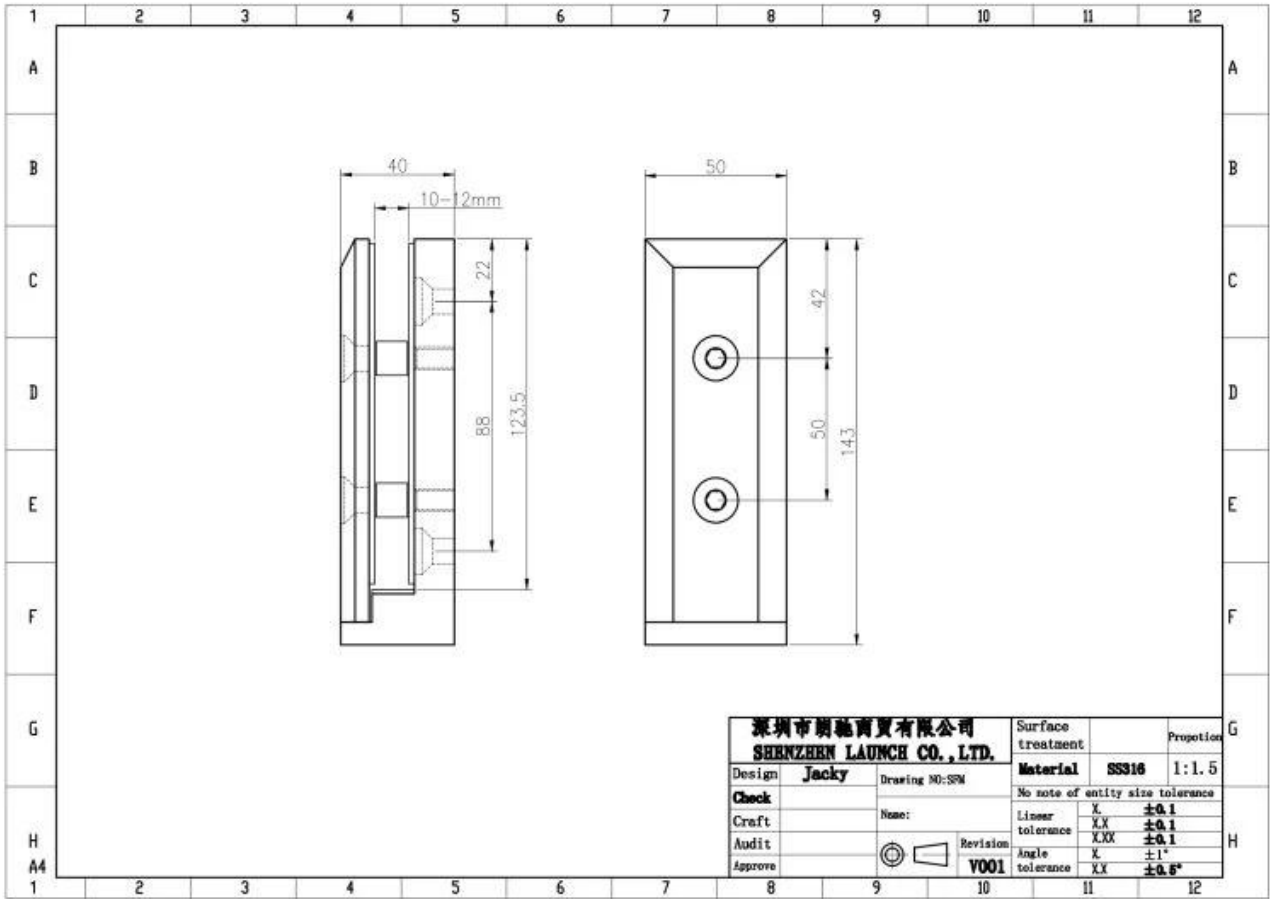
Ontploftevisie



MassaProductie



TechnischTekening



HoeNaarMonteren



With the front face plate removed, level or align the Clamps to your design plan, taking into account the spacing recommendations and weight limitations shown on the back of this page. Be sure to secure the Clamps to an engineered and approved substrate with appropriate fasteners. You can fabricate the glass ahead of time, however, we recommend calculating hole locations after the Clamps are installed to account for any clamp movement.



Check the layout of the Clamps for alignment, then do a layout for fabricating holes in the glass to meet the installed measurements and spacing between glass panels.



Place the gaskets against the base fitting, both back and bottom lip, then set the glass panel on the base fitting. Next place the front gasket against the glass panel along with the front plate and secure to the base fitting by tightening the two screws. Don't tighten all the way, leave enough play to adjust the glass panel.



After you have achieved the proper alignment tightly secure the front plate screws to finish the installation. Clean the glass and view from a distance to determine if everything matches up and looks good. Adjust if necessary.

ProjectFoto







Anderetypesverticaalgemonteerdglaskraan

Spiegelend oppervlak



Satijnen afwerking



Matzwarte afwerking van het oppervlak



Neem gerust contact op als u vragen heeft.

Attn: Frank Fang

Telefoon: +8615906261741

E-mailadres: sales02@launch-china.cn