

# Moderne gepoedercoat smeedijzeren terras balkon railing factory designs

**ProductBeschrijving**

**Productshow**



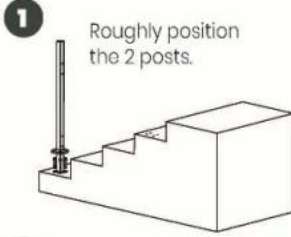


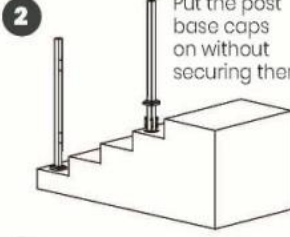
**Installatie**


# Guard Rail Assembly Instructions


**Tools Required:** Electrical Power Drill  
(Impact Drill Preferred)


**Overview:** Assemble the rail and position it before marking holes for drilling. Improper installation can lead to failure of rail system or injury.


- 


1 Roughly position the 2 posts.
  - 

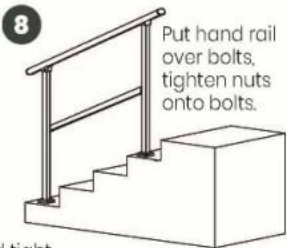
2 Put the post base caps on without securing them.
  - 


3 Secure top rail & post with brackets - 4 screws each.
  - 


4 Add the ends to the top rail.
  - 

5 Secure inside rail with brackets - 2 screws each.<sup>1</sup>
  - 

6 Position whole rail. Mark the 4 holes on each post.
  - 

7 Remove hand rail, drill holes straight down, and hammer in bolts.<sup>2</sup>
  - 

8 Put hand rail over bolts, tighten nuts onto bolts.
  - 

9 Insert the vertical railings.
  - 

10 Secure all of the inner rail.<sup>3</sup>
- <sup>1</sup> Inside rail will be loose until each post is secured to the ground.
- <sup>2</sup> Double check posts are parallel and tight against inside rail before marking holes for drilling.
- <sup>3</sup> Push and pull top rail & inside rail to ensure all is secure.

**KEBIL** 科比奥 **SHENZHEN LAUNCH CO. LTD**  
**LAUNCH INTERNATIONAL LIMITED**

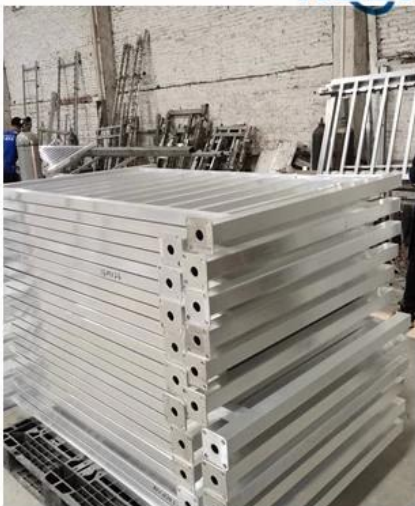
## ProductieenInpakken



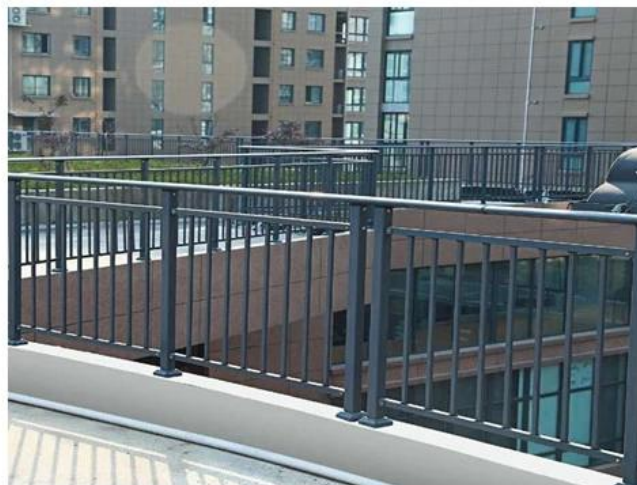
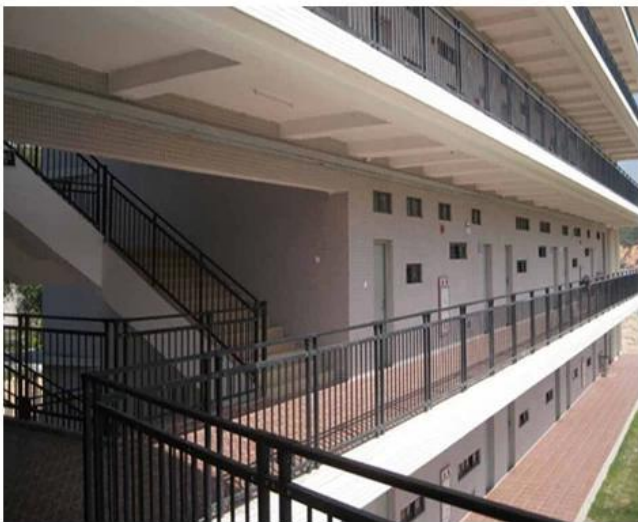
KEBIL 科比奥 SHENZHEN LAUNCH CO., LTD  
LAUNCH INTERNATIONAL LIMITED



KEBIL 科比奥 SHENZHEN LAUNCH CO., LTD  
LAUNCH INTERNATIONAL LIMITED



Sollicitatie



## Contacten

Bedankt voor het bezoeken!

Noodzaak van citaat of vragen, laat een bericht achter. We nemen binnen 24 uur contact met u op.

Voor eventuele urgente vragen, neem dan contact op met de onderstaande:

Wendy E-mail: [sales04@launch-china.cn](mailto:sales04@launch-china.cn)

MOB / WAT IS APP: +86 15989339827