

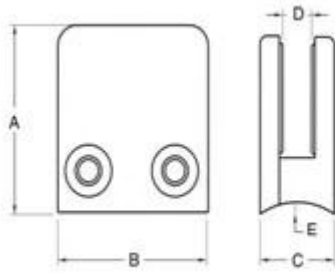
Productnaam: RVS Vierkant Type Glasklem voor Glasdikte 8mm-13mm  
glasklem, roestvrijstalen glasklem, D-klem, glazen clip, glazen relingklem, glazen houderklem  
Land van herkomst: China  
Materiaal: Sroestvrij staal 316 / 316L  
Af hebben:satijn / spiegel  
Fabricageproces: gieten - modificeren - boren / tikken - polijsten - verpakken  
Toepassing: te installeren op vierkante / ronde relingpaal, muur, vloer om het glas vast te houden  
Haven: Shenzhen, China  
Handelsvoorwaarden beschikbaar: FOB, CIF, C & F, CFR, EX-WORKS  
Betalingvoorwaarden beschikbaar:T / T; L / C op zicht; Western Union, Alibaba Escrow

**Product afbeeldingen:**





Dit type glasklem kan worden bevestigd aan ronde palen en vierkante palen. Hieronder ziet u de maat van de klem:



Item No.	A	B	C	D	E
G101	51	41	25	11	0
G101R	55	41	25	11	R-21.5
G102	44	44	25	11	0
G102R	48	44	25	11	R-21.5
Suitable for 8-10mm glass					



**G102R**



**G102**

de klem meestal gebruikt met roestvrij stalen paal om glazen panelen te houden, voor balkonhekwerk, terrasleuning, trap. Geschikt voor zowel binnen als buiten.







Shenzhen Launch Co., Ltd was established in 2004, located at Nanshan District, Shenzhen, and one hour by car from Hongkong International Airport. Our main product is high-grade building materials includes stainless steel balustrade post, staircase handrail, balcony guardrail, swimming pool fence and other high-grade building materials. All the products are designed strictly according to the high-end market requirements. We have our own factory in Tangxia Town, Dongguan, has a variety of precision equipment more than 50 sets: CNC lathe, milling machine, punching machine, pipe cutter, argon welder, drilling machine, polisher, etc. which can provide customers with complete product processing services. With the German SPECTRO Spectrometer, we insist on testing every batch of materials to ensure that the material is highly qualified. We also have hardness gauge, secondary element and other test equipment to ensure the products meets customers' requirements.

## ABOUT US





# OUR ADVANTAGE

Please do not hesitate to contact us if you have any requirement regarding our production lines, you can expect a timely reply with professional solutions!



Own factory, shortest lead time.



Can help customers design product drawings based on customer ideas and design engineering installation drawing according to the customer site sketch.



Sample order, trial order acceptable.



Provide material test report to ensure that the material is qualified.



13 years of industry experience, we can help customers recommend the best solution to help customers save cost.

# OUR FACTORY

More than 13 years experience in hardware industry design and processing, we can provide customized services from design to the sample and small batch trial production.



# OUR CERTIFICATE

With premium quality, competitive price and superior service, we won a lot of customers' favor.  
Our products are popular in North America, European and Australia.





# PRODUCTION PROCESS



Casting



CNC lathe



CNC Milling



Stamping



Drilling & Tapping

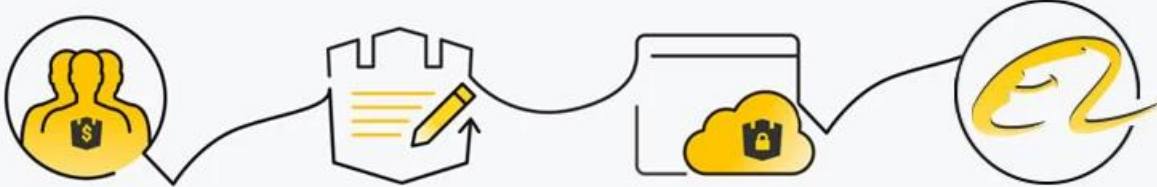


Polishing



# PAYMENT & TRANSPORTATION

Welcome Alibaba Trade Assurance Order!



1 Start an order

2 Negotiate terms with our sales service & confirm order

3 Make payment

4 Alibaba provide full assurance



## FAQ

1. Zijn jullie fabriek?

Ja, we zijn in de fabriek.

2. biedt u gratis monsters?

Ja, we bieden gratis voorbeelden, maar klanten moeten expresskosten betalen.

3. Welke materialen heb je?

We hebben het materiaal van roestvrij staal 304, 316, 316L en Duplex 2205.

4. Wat is uw MOQ?

MOQ van vereiste bestelling is 1 st.

5. Wat voor soort betaling accepteert u?

Wij accepteren de betaling van T / T, LC, PayPal, West Union, etc.

6. Wat is uw betalingstermijn?

Onze betalingstermijn is T / T (100% of 30/70) of LC op zicht.

7. Wat is uw levertijd?

Onze levertijd is van 5 dagen tot 30 dagen op basis van uw hoeveelheid.

8. Do u OEM & amp aanbieden; ODM service?

Ja, we bieden OEM & ODM-service.

9. Do u biedt de naverkoopdienst?

Ja, we bieden service na verkoop. Elke klacht voor bestellingen zal binnen de 12 uur worden behandeld.

Neem direct contact met ons op voor meer informatie!

E-mail: [sales03@launch-china.cn](mailto:sales03@launch-china.cn)

Mob: +86 15907334556

 **KEBIL** 科比奥® **SHENZHEN LAUNCH CO.LTD**  
**LAUNCH INTERNATIONAL LIMITED**

**Eve Chow**

Sales representative

M : +86 159 0733 4556

T : +86 755 8603 7559

E : [sales03@launch-china.cn](mailto:sales03@launch-china.cn)

A : B5-5003, Yilida Bldg, Nanshan District, Shenzhen