

RVS 316 duplex 2205 frameleze glazen balustrade spon

1. Stainless staal 316 duplex 2205 frameleze glazen balustrade spon beschrijving.

Frameless Glas Clamp railingsysteem

- 1). Voor 3/8 ", 1/2" en 9/16 "(10, 12, en 13,52 mm) glass
- 2). Voor Schermen van de Pool, Balkon, en Deck Applications
- 3). Our Frameless Glas Clamp Railing System biedt een bijna onzichtbare 'frameless' look. Geen verticale posten worden gebruikt tussen de glasplaten; zij zijn uitsluitend ondersteund vanuit de bodem van hoge sterkte roestvrij stalen klemmen. Hun kwaliteit van 316 roestvast stalen constructie zorgt voor een superieure weersbestendigheid.



2. Model No.RBM frameless glazen balustrade spon

1. Materiaal: Roestvrij staal 316 / duplex 2205.
2. Afwerking: satijn of glanzend gepolijst.
3. Voor glassdikte: 8-13.52mm.

4. Model No. RBM.



RBM





Model No. : SBM
Material: Stainless steel (AISI 304)
Finish: Polished
For glass thickness: 3-5mm, 6-8mm, 10-12mm

Model No. : SCM
Material: Square core (AISI 304)
Finish: Polished
For glass thickness: 3-5mm, 6-8mm, 10-12mm

Model No. : PSM
Material: Round core (AISI 304)
Finish: Polished
For glass thickness: 3-5mm, 6-8mm, 10-12mm

GLASS LATCH

Model No. : ...
Material: ...
Finish: ...
For glass thickness: ...

Model No. : ...
Material: ...
Finish: ...
For glass thickness: ...

Model No. : ...
Material: ...
Finish: ...
For glass thickness: ...

GLASS SPIGOT



Model No. : SBM	
Square base plate spigot	
Material	Stainless steel 316, 316L, duplex 2205
Finish	Mirror or satin polished
For glass thickness	10mm - 13.52mm



Model No. : SCM	
Square core drill spigot	
Material	Stainless steel 316, 316L, duplex 2205
Finish	Mirror or satin polished
For glass thickness	10mm - 13.52mm



Model No. : RBM	
Round base plate spigot	
Material	Stainless steel 316, 316L, duplex 2205
Finish	Mirror or satin polished
For glass thickness	10mm - 13.52mm



Model No. : SCM-1

Material	Stainless steel 316, 316L, duplex 2205
Finish	Mirror or satin polished
For glass thickness	10mm - 13.52mm

GLASS LATCH



Model No. : GL-90	
Glass to glass latch 90 degree	
Material	Stainless steel 316/316L
Finish	Mirror or satin polished
For glass thickness	10mm - 13.52mm
Remark	Other degrees available



Model No. : GL-90

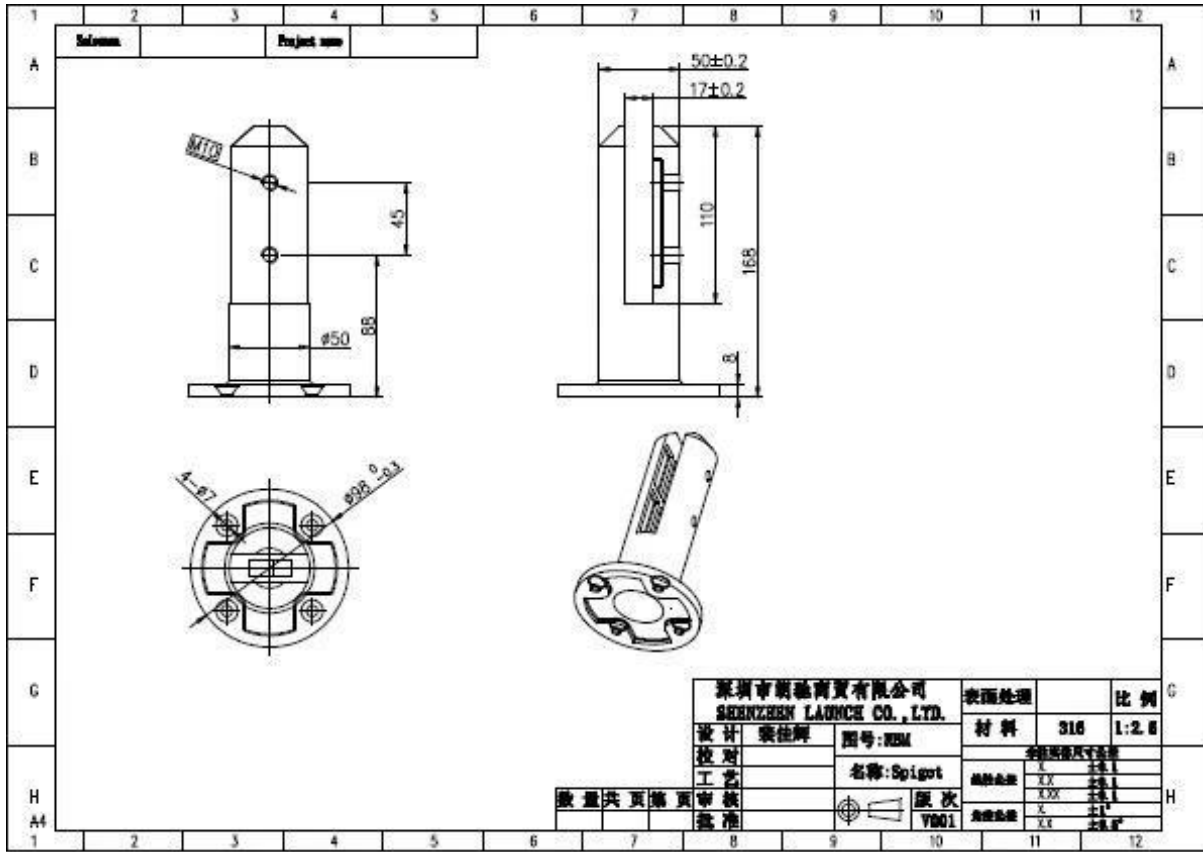
Glass to glass latch 90 degree	
Material	Stainless steel 316/316L
Finish	Mirror or satin polished
For glass thickness	8-12mm
Remark	Other degrees available



Model No. : GL-90

Glass to round glass latch 90 degree	
Material	Stainless steel 316/316L
Finish	Mirror or satin polished
For glass thickness	8-12mm



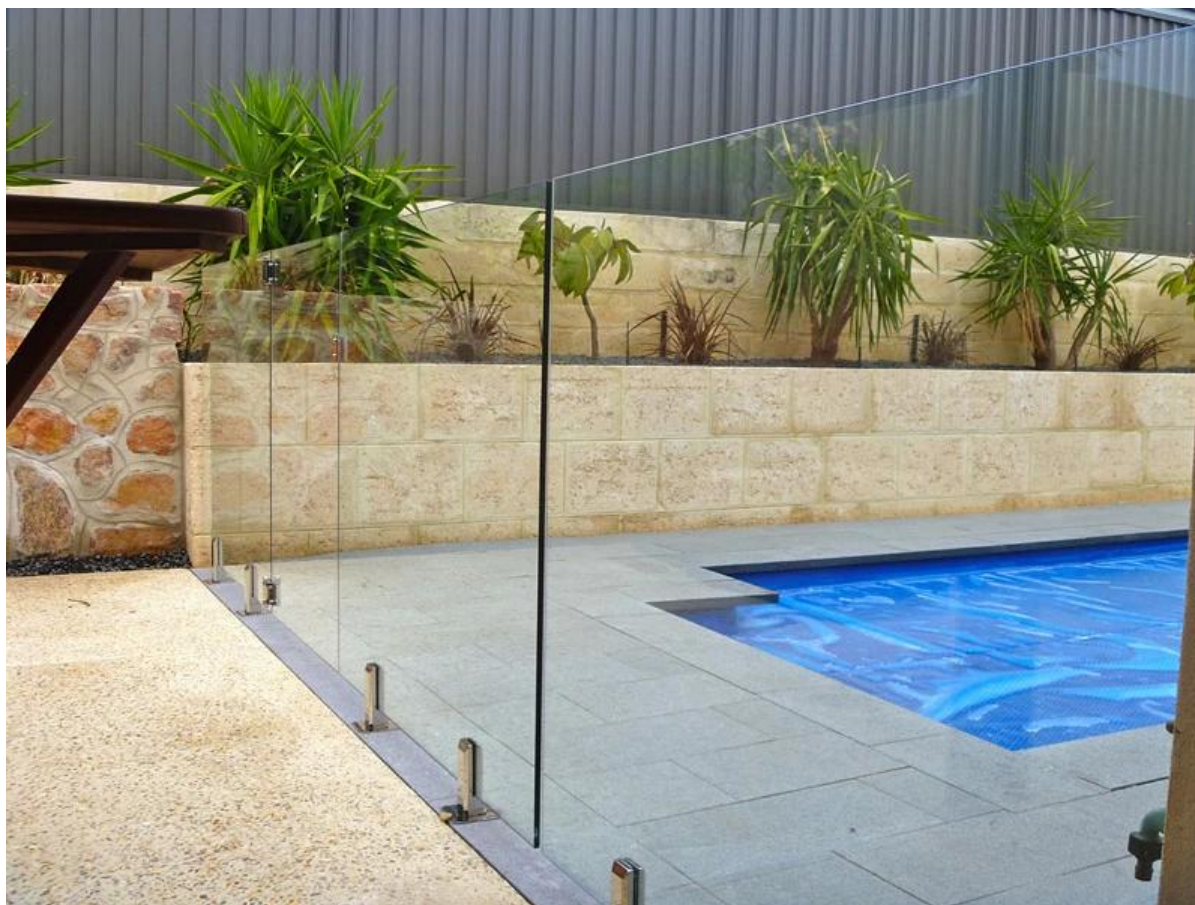


3. Model No. SBM (Plein base spie),

[javascript: void \(0\); /* 1469842823954 */](#)



SBM



Bedankt voor uw bezoek, Elke belanghebbende of behoeften, neem dan vrijblijvend contact met mij op:

Joey Lan

Shenzhen Launch Co, Ltd

www.launch-china.cn www.chinabalustrade.com

E-mail: sales02@launch-china.cn.

Skype: launch-02. Office: 86-755-86037559.

Toe te voegen: B5-003, 5 / F-Block 3, Yilida Building, No.1092 Nanshan Road, Nanshan District, Shenzhen, China. Postcode 518.054.