

ZwaarPlichtDe lenteGeladenStainless staal 316 glas tot muurscharnier voor framelezeZwemmenPool hek.

### 1.Specificaties-

ModelNee.	G-w
Type	GlasTotmuurscharnier, andertypesbeschikbaarglastotglas, glastottrondena
Materiaal	316 roestvrij staal
Af hebben	Matte zwarte poedercoating
Glasdikte	8 mm-12mm

### 2.Foto's en tekenen-



**Spring loaded hinges**

Stainless steel spring loaded hinges

- Made of SS 316
- For use of 8-12.76mm glass

Maximum door leaf weight : 30 kg /pair

Maximum door leaf width : 900mm

Spring can be adjusted for closing speed control .



Part # G-G



Part # G-R



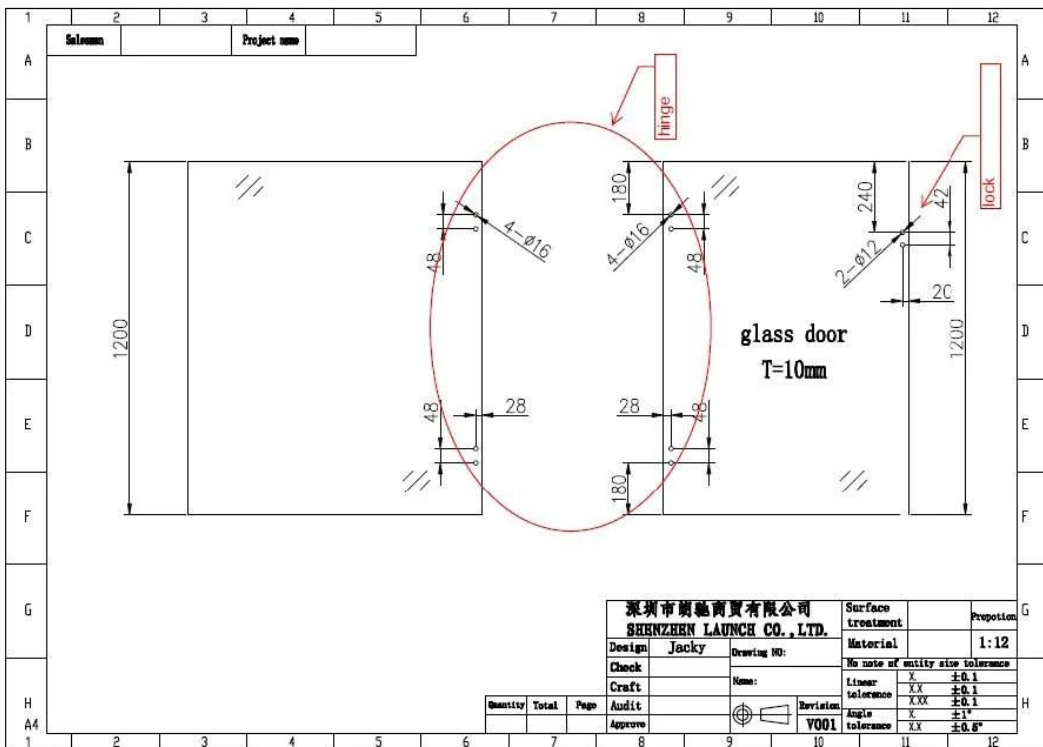
Part # G-W

SHENZHEN LAUNCH CO., LTD

3. Glazen gat tekening voor glazen poort -

**Spring loaded hinges**

Glass hole drawing for hinge set & glass latch



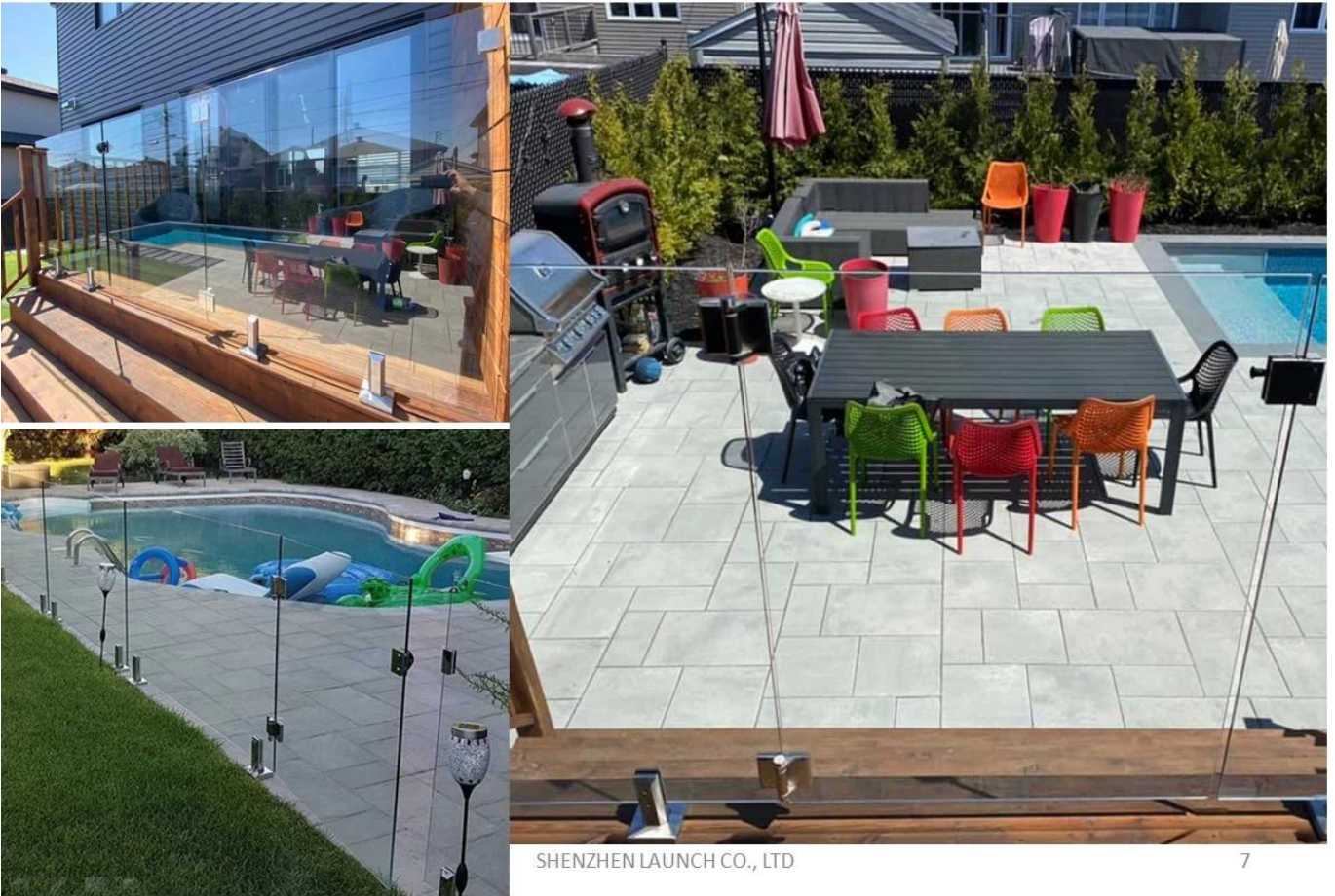
深圳市朗馳商貿有限公司		Surface treatment	Proportion
SHENZHEN LAUNCH CO., LTD.		Material	1:12
Design: Jacky	Drawing NO:	No note of unity size tolerance	
Check:	Name:	Linear tolerance	X ±0.1
Craft:	Revision:	XXX tolerance	±0.1
Audit:	VO01	Angle tolerance	X ±1°
Approve:			XX ±0.5°

SHENZHEN LAUNCH CO., LTD

#### 4. Zwembadomheining met glazen scharnieren -

##### Spring loaded hinges

Project photos -



SHENZHEN LAUNCH CO., LTD

7