

roestvrij staal balustrades top rails voor 8-13.52mm glas

### 1. stainless staal balustrades top rails beschrijving.

Materiaal: roestvrij staal 304/316 / 316L

Afwerking: Geborsteld of Mirror gepolijst

Voor glasdikte : 8-13.52mm dikte

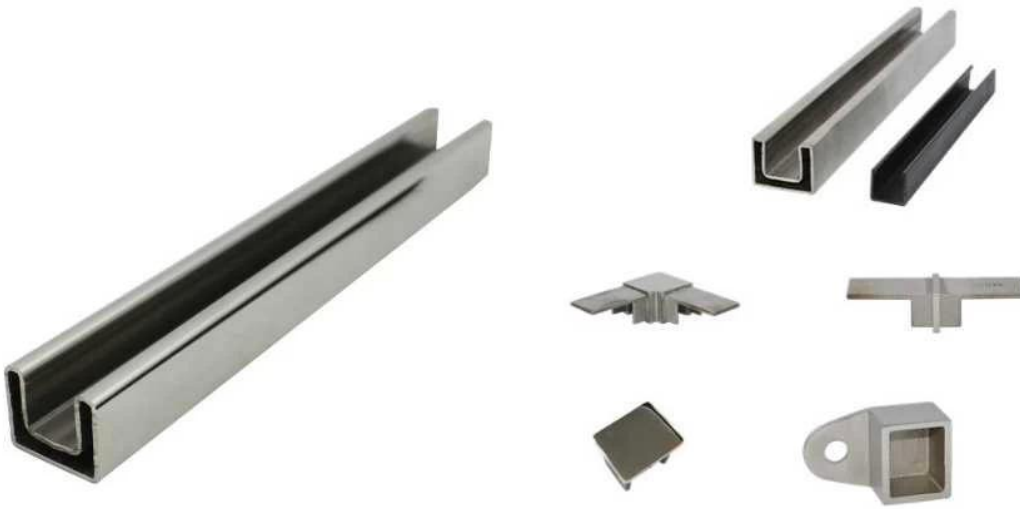
Dimensie: Vierkante vorm, 25 \* 20mm, groove 14 \* 14mm,

5,8 meter per lengte, of als je per eis gesneden in secties



### 2. roestvrij staal balustrades top rails en hulpstukken gegevens:

Slot handrail and fittings



Square slot handrail series

roestvrij staal balustrades top rails fittings foto's,

90 degree Corner connector



180 degree middle connector



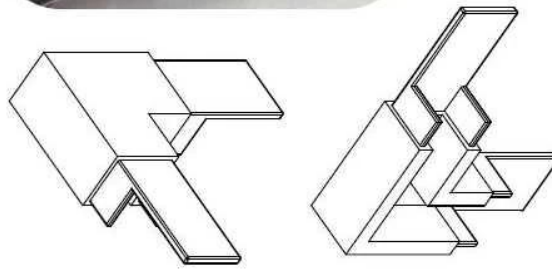
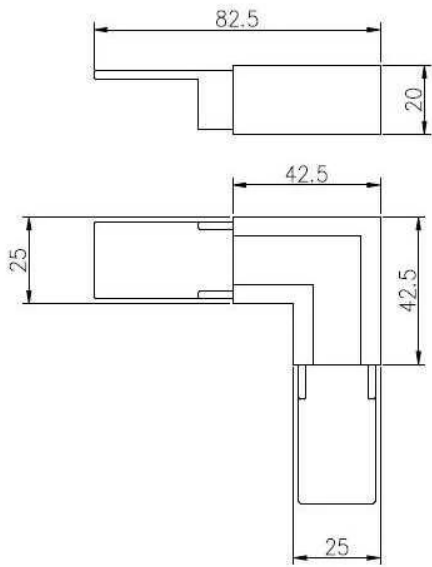
End Cap



Wall Bracket

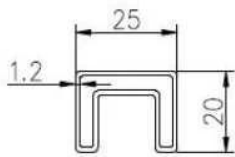


90 degree connector drawings

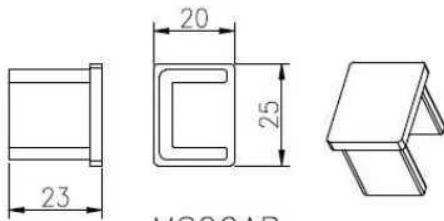
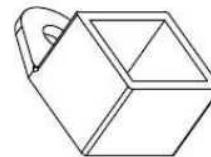
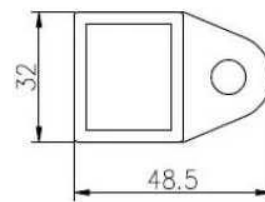
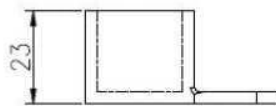


MSQC90

Slot tube handrail + end cap + wall bracket connector drawings



25\*20 tube



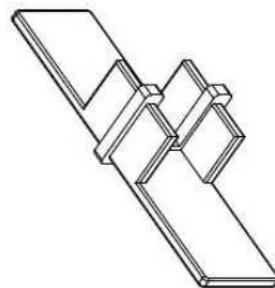
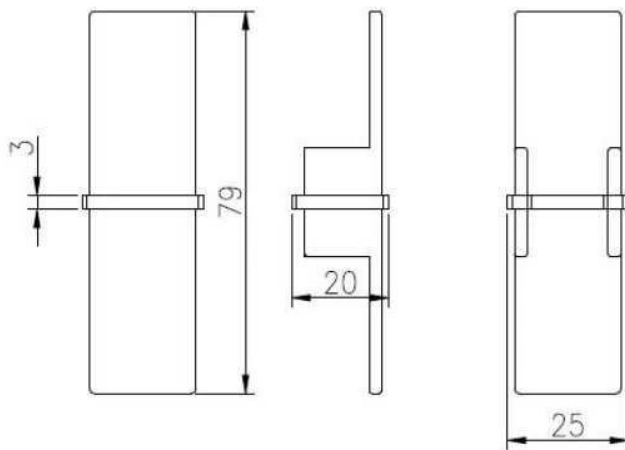
MSQCAP



MSQCW



180 degree connector drawings



MSQC180

3. roestvrij staal balustrades top rails project:









4. Ronde diameter vorm 25,4 mm roestvrij staal balustrades top rails.





**KEBIL** 科比奥™

**ISO**  
9001:2008  
REGISTERED

**Factory Audit**



**mini top rail**



**square top raip fittings**



**[www.launch-china.cn](http://www.launch-china.cn)**

Bedankt voor uw bezoek, Elke belanghebbende of behoeften, neem dan vrijblijvend contact met mij op:

Joey Lan

**Shenzhen Launch Co, Ltd**

[www.launch-china.com](http://www.launch-china.com) [www.launch-china.en.alibaba.com](http://www.launch-china.en.alibaba.com) [www.chinabalustrade.com](http://www.chinabalustrade.com)

E-mail: [sales02@launch-china.cn](mailto:sales02@launch-china.cn).

Skype: launch-02. Office: 86-755-86037559.