

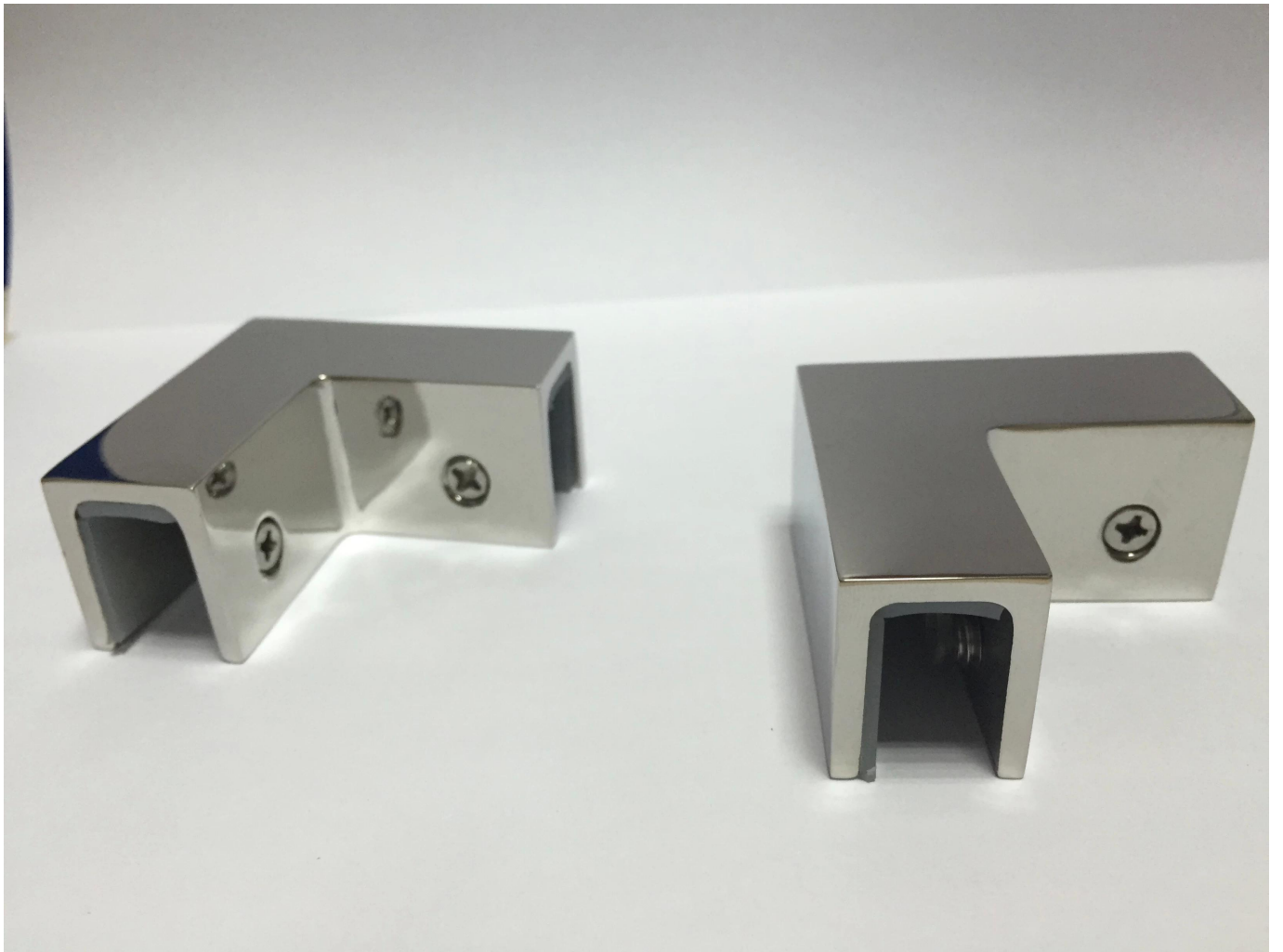
stainless steel glass cormor clamp CB-90

Description

1. material: stainless steel 304/316
2. finish: satin or mirror
3. size: 52*52*25mm
4. for glass thickness: 8-12mm
5. MOQ: 1 pc

KEBIL 科比奥®





installation



[Please feel free to contact us if you are interested.](#)

Email: sales03@launch-china.cn

Skype: [launch_03](#)
