

trap glazen balustrade rvs standoff

materiaal: roestvrij staal 304/316

fiafwerking: satijn of glanzend gepolijst

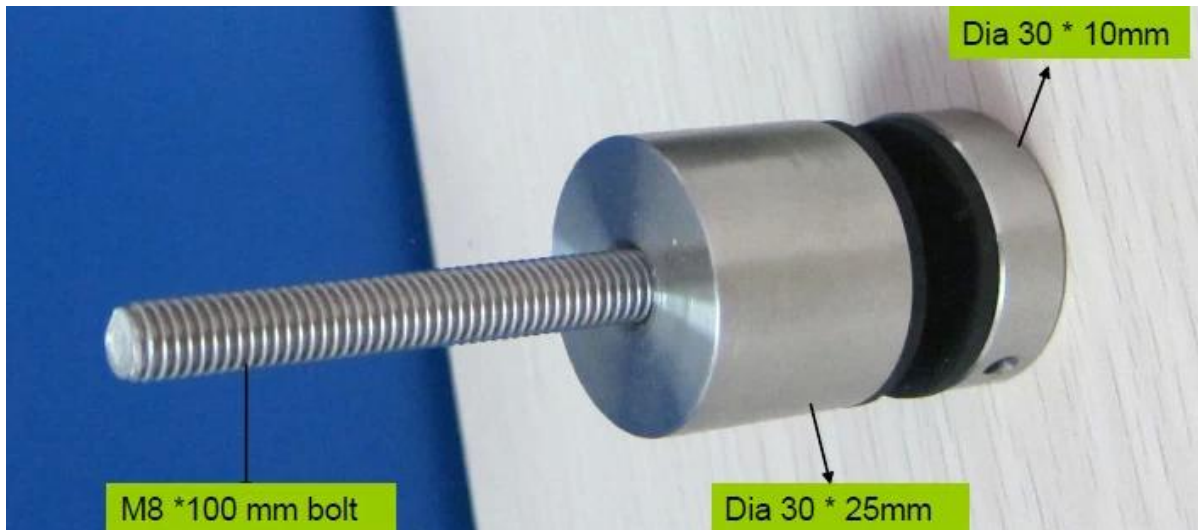
siliconenrubber pakking opgenomen

Model Nr .: SF-30

size: 30 * 10mm cap, 30 * 25mm lichaam, M8 * 100 bout

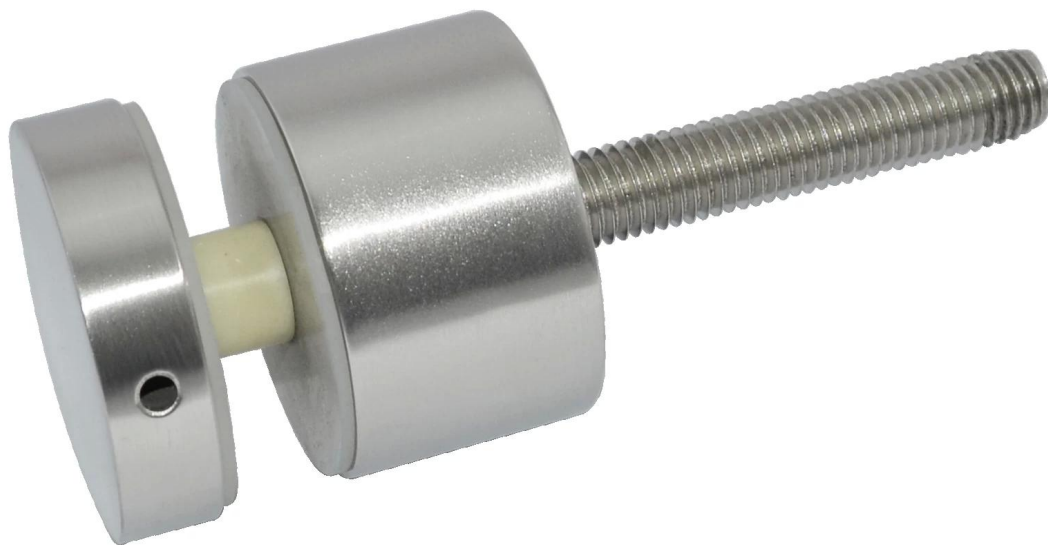


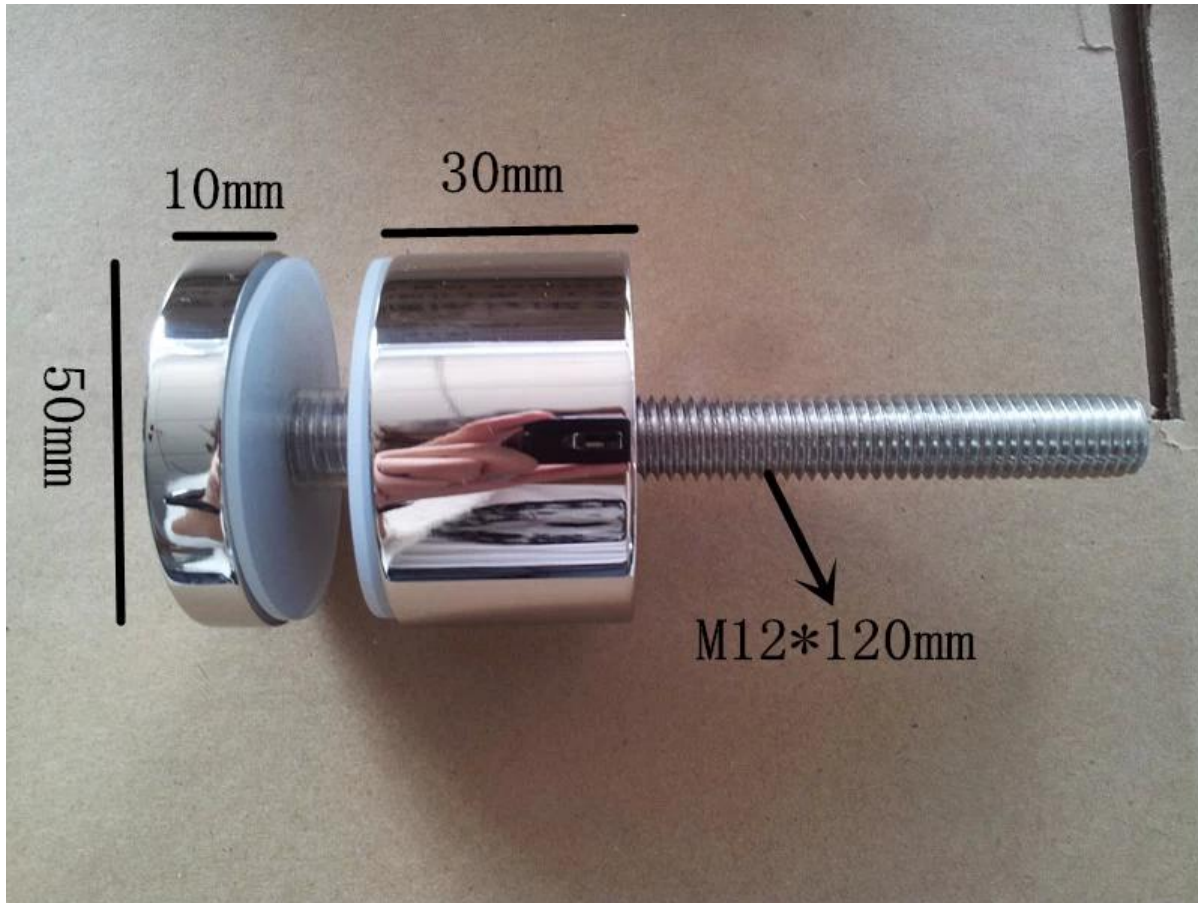
SF-30



Model Nr .: SF-50

size: 50 * 10mm cap, 50 * 30mm lichaam, M12 * 120 bolt





Model Nr .: SF-50T

size: 50 * 10mm cap, 50 * 30mm lichaam

montageplaat grootte: 200 * 100 * 10mm



SF-50T







Heeft u interesse in onze producten, neem dan gerust contact met me op.
E-mailadres: sales03@launch-china.cn
Skype: launch-03