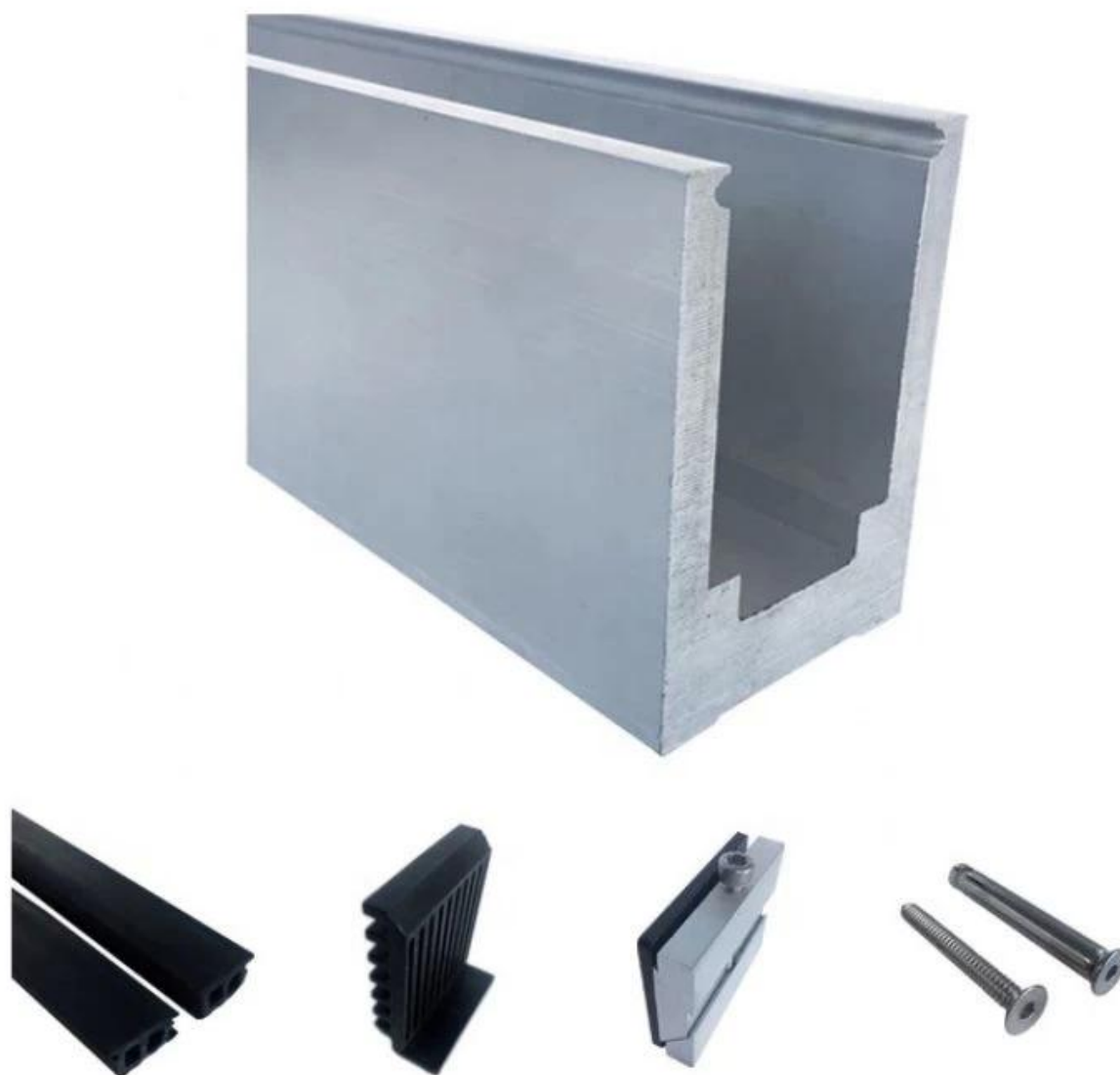


Aluminiowy kanał bazowy U, zwykle mocowany do podłoża, umieszczony w dolnej części szklanych systemów balustrad w celu podtrzymania szkła. Systemy balustrad balkonowych są jednym z najbardziej powszechnych zastosowań, które tego potrzebują, ponieważ dają szerokie pole widzenia, aby cieszyć się piękną scenerią podczas picia kawy lub czytania książki na balkonie.

Pokaż produkt

Solidny aluminiowy kanał bazowy

Okucia: taśma wodoodporna, kształtki plastikowe i aluminiowe, kołki rozporowe



Pusta aluminiowa podstawa kanału

Okucia: taśma wodoodporna, kształtki plastikowe i aluminiowe, kołki rozporowe



Typy aluminiowych kanałów bazowych typu U.

LCH-A01 / A02

LCH-A01



20 mm to 21.52 mm tempered glass

1 m aluminium groove contains the following accessories (excluding glass)



LCH-A02



20 mm to 21.52 mm tempered glass

1 m aluminium groove contains the following accessories (excluding glass)



LCH-B01 / B02

LCH-B01



16 mm to 17.52 mm tempered glass

1 m aluminium groove contains the following accessories (excluding glass)



LCH-B02



16 mm to 17.52 mm tempered glass

1 m aluminium groove contains the following accessories (excluding glass)



LCH-C01 / C02

LCH-C01



12 mm to 13.14 mm tempered glass

1 m aluminium groove contains the following accessories (excluding glass)



Aluminum trough 1 m Waterproof tape 2 meters



Aluminum plastic fittings 3 sets



Expansion screws 3 pieces

LCH-C02



12 mm to 13.14 mm tempered glass

1 m aluminium groove contains the following accessories (excluding glass)



Aluminum trough 1 m Decorative cover 2 meters



Aluminum plastic fittings 3 sets



Expansion screws 3 pieces

LCH-D01 / D02

LCH-D01



12 mm to 13.14 mm tempered glass

1 m aluminium groove contains the following accessories (excluding glass)



Aluminum trough 1 m Waterproof tape 2 meters



Aluminum plastic fittings 3 sets



Expansion screws 3 pieces

LCH-D02



12 mm to 13.14 mm tempered glass

1 m aluminium groove contains the following accessories (excluding glass)



Aluminum trough 1 m Decorative cover 2 meters



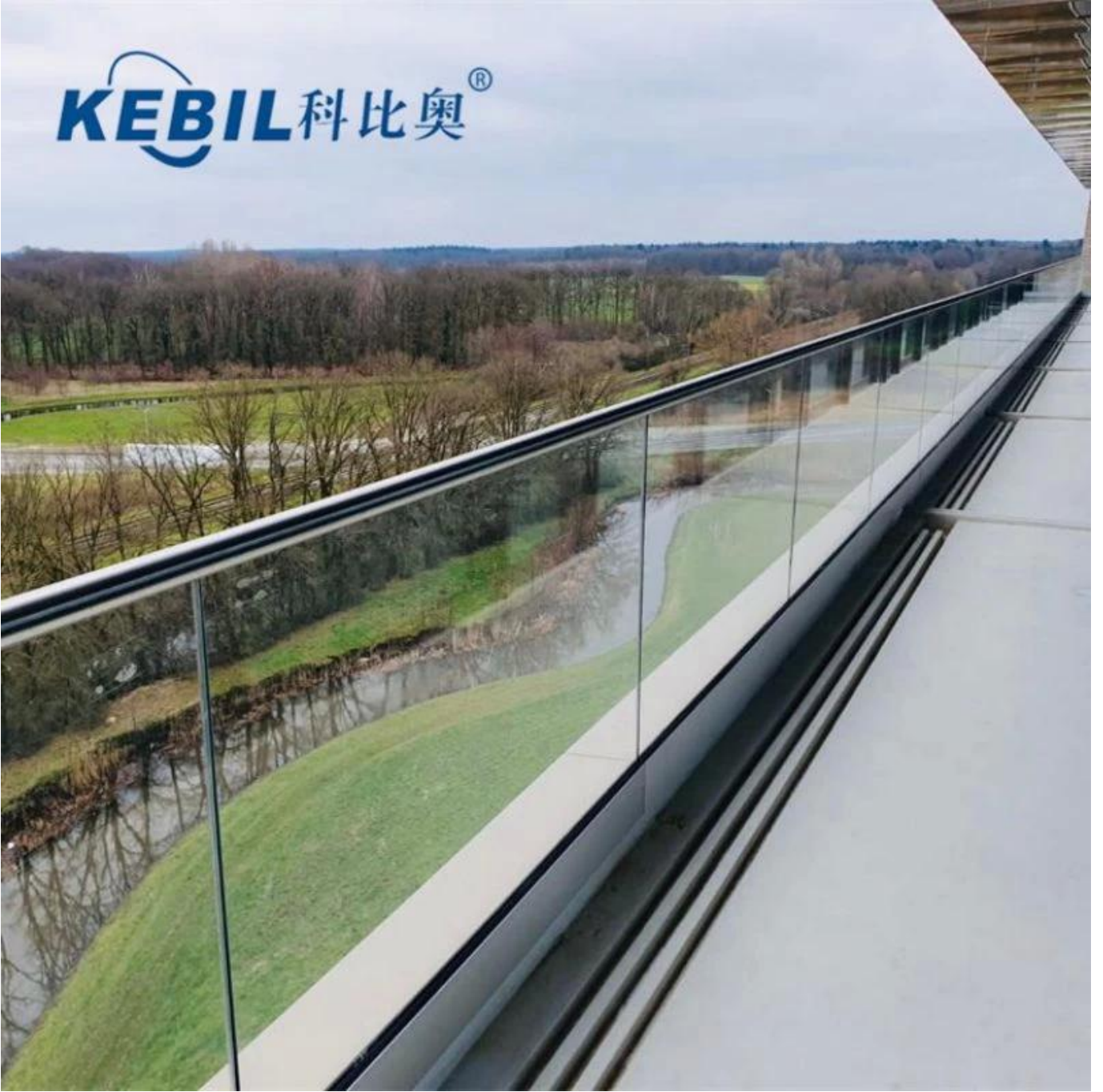
Aluminum plastic fittings 3 sets



Expansion screws 3 pieces

Rysunki projektowe

KEBIL 科比奥®





Wszystkie systemy z kanałem U.

U-Channel System



U-BASE CHANNEL

- Made of aluminum 6063 T5
- For use with 10-12mm glass
- 80x35mm
- 5.8m per length or as per your requirement



U-BASE CHANNEL

- Made of aluminum 6063 T5
- For use with 15-19mm glass
- 65.3x104mm
- 5.8m per length or as per your requirement



U-TOP CHANNEL

- Made of stainless steel 316L
- For use with 10-12mm glass
- ϕ 25.4mm
- 5.8m per length , or as per your requirement



U-TOP CHANNEL

- Made of stainless steel 316L
- For use with 10-12mm glass
- 25x20mm,
- 5.8m per length , or as per your requirement

W przypadku pytań prosimy o kontakt.

Frank Fang

Telefon / WhatsApp / Wechat: + 8615906261741

Skype: uruchomienie-02

E-mail: sales02@launch-china.cn