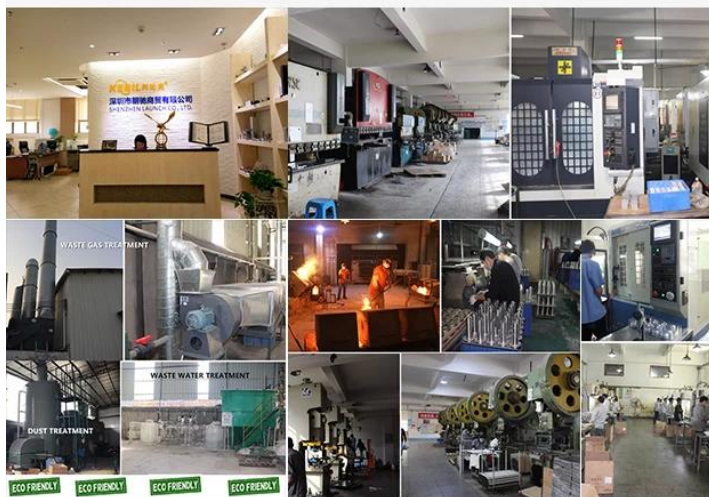


O NAS:



ABOUT US

Shenzhen Launch Co., Ltd was established in 2004, located at Nanshan District, Shenzhen, and one hour by car from Hongkong International Airport. Our main products are high-grade building materials including stainless steel balustrade post, staircase handrail, balcony guardrail, swimming pool fence and other high-grade building materials. All the products are designed strictly according to the high-end market requirements. We have our own factory in Tangxia Town, Dongguan, with more than 50 sets of various precision equipments, such as CNC lathe, milling machine, punching machine, pipe cutter, argon welder, drilling machine, polisher, etc. which can provide customers with complete product processing services.



15 YEARS EXPERIENCE

We have been manufacturing railing hardwares since 2004.



ONE STOP SERVICE

We provide integrated railing solutions.
We manufacture.
We deliver.



PROFESSIONAL R&D TEAM

We have engineering experts for developing new products.



TOP QUALITY & GOOD PRICE

We are strict on quality control as well as cost evaluation.

Moden Design Szklana balustrada schodowa Czop ze stali nierdzewnej z podwójnym szklanym zaciskiem:

Numer modelu:LCH-115

Zamontowane:Posadzka

Pozycja:Poręczce pokładowe / poręczce, poręczce schodowe / poręczce

Nazwa produktu:Szklany balustradowy schodek Czop ze stali nierdzewnej z podwójnym szklanym zaciskiem

Podanie:Bezramowe ogrodzenie i balustrada

Rodzaj:Wolnostojące

Stosowanie:Konstrukcja tralki

Koniec:Satyna / Lustro polerowane / Czarny

Instalacja:Montaż na podłodze

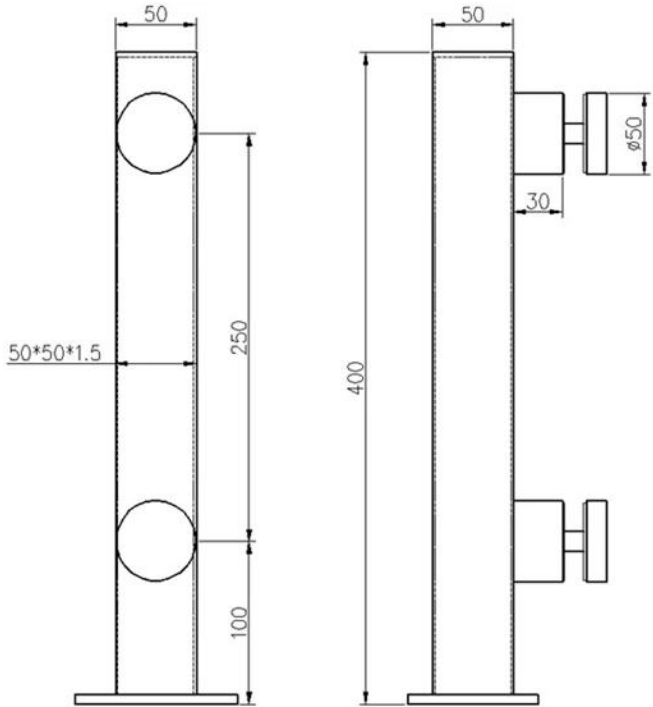
Standard:Australia Standard AS 1926.1-2012

Grubość szkła:8/10/12/10,76 / 12,76 / 13,14 / 13,52 mm

OEM i ODM:Do przyjęcia

Materiał:SS316 / 316L / DUPLEX2205

KEBIL 科比奥®









**Zapraszamy do kontaktu w celu uzyskania szczegółowych informacji:
sales03@launch-china.cn**

HP / WhatsApp / WeChat: +8615907334556