

Glass clamps are used to hold glass panels 8mm to 13.56mm thick .

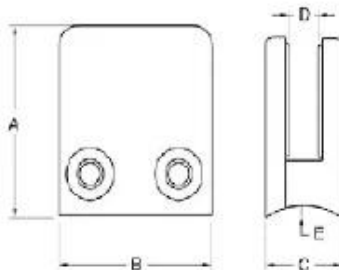
Glass clamps are mounted to round or square railing posts , wall or floors .

We have different models of clamps for different thickness of glass .

Kindly check below pictures for more information :

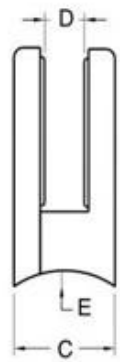
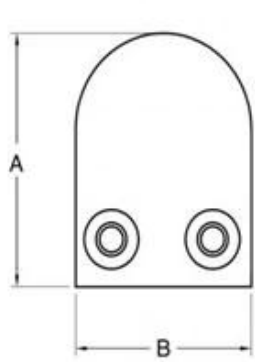
[D shape glass clamp for 8-10mm glass polished stainless steel](#)

Material	Stainless steel 304/ 316
Finish	satin / mirror polished



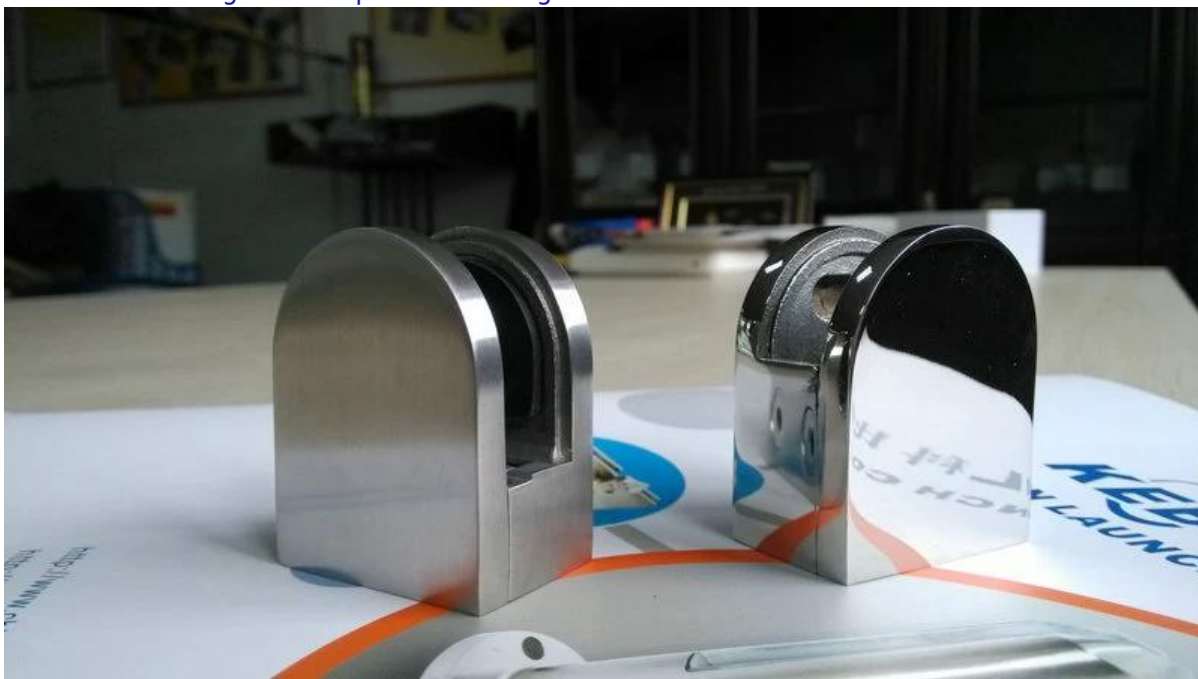
Model No.	A	B	C	D	E
G102	44	44	25	11	0
G102R	48	44	25	11	R-21.5

[Stainless steel D glass clamp for 6mm thickness glass](#)



Item No.	A	B	C	D	E
G103R	52	40	22	8	R-21.5
G104R	52	40	26	12	R-21.5
G105R	58	45	28	14	R-25.4
Suitable for 6-12mm glass					

Stainless steel D glass clamp for 8-10mm glass balustrade



stainless steel glass clamp, glass clip for holding glass, balcony / terrace railing clamp



G105