

Tempered glass railing staircase

Hardware material:

stainless steel 304 for indoor;

stainless steel 316 for outdoor;

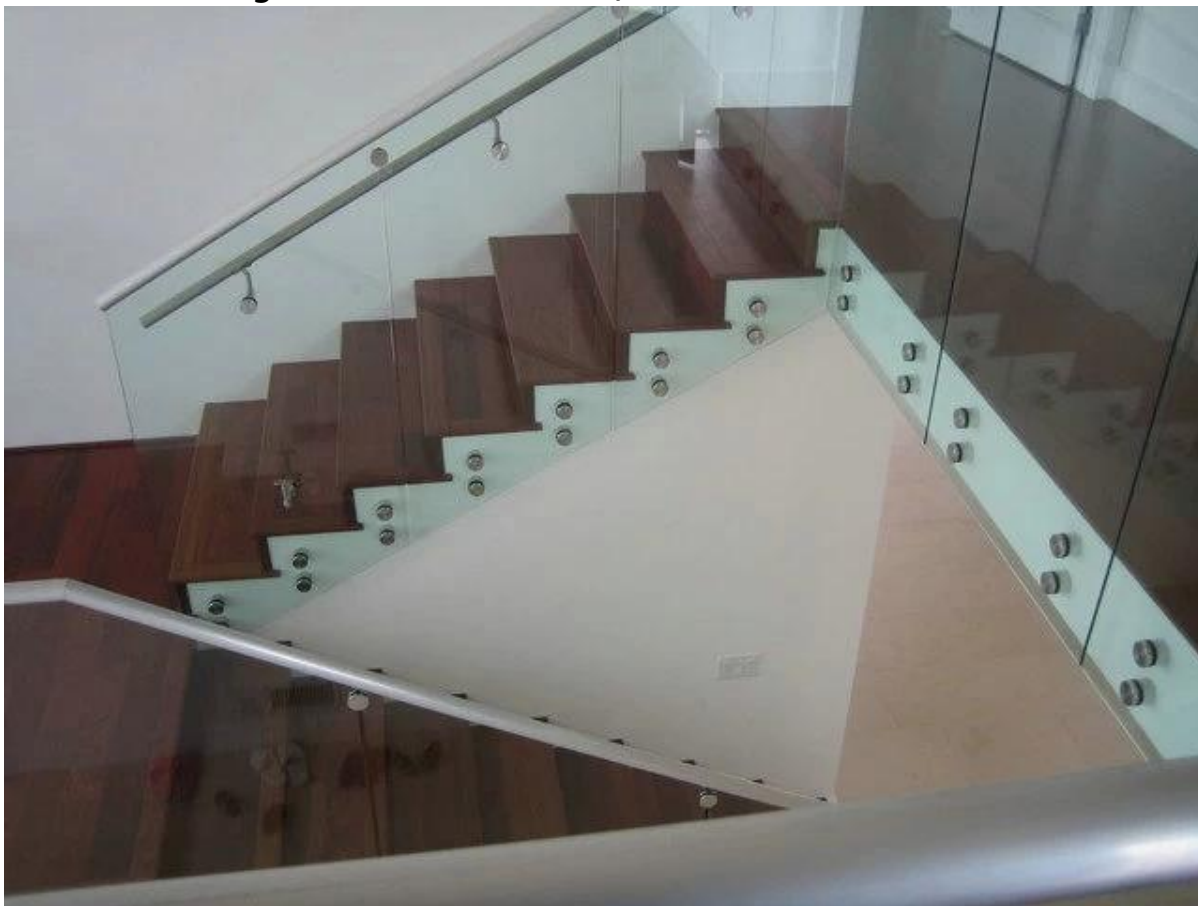
Finish/surface: satin brushed or mirror polished;

Glass type: tempered glass or laminated glass;

Glass color: clear see through, frost no see through and other RAL color;

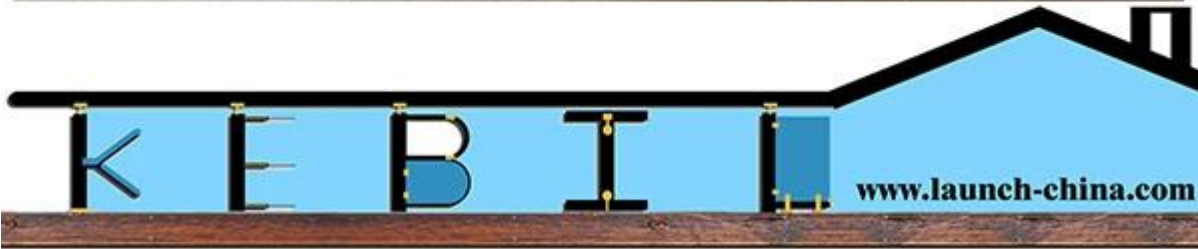
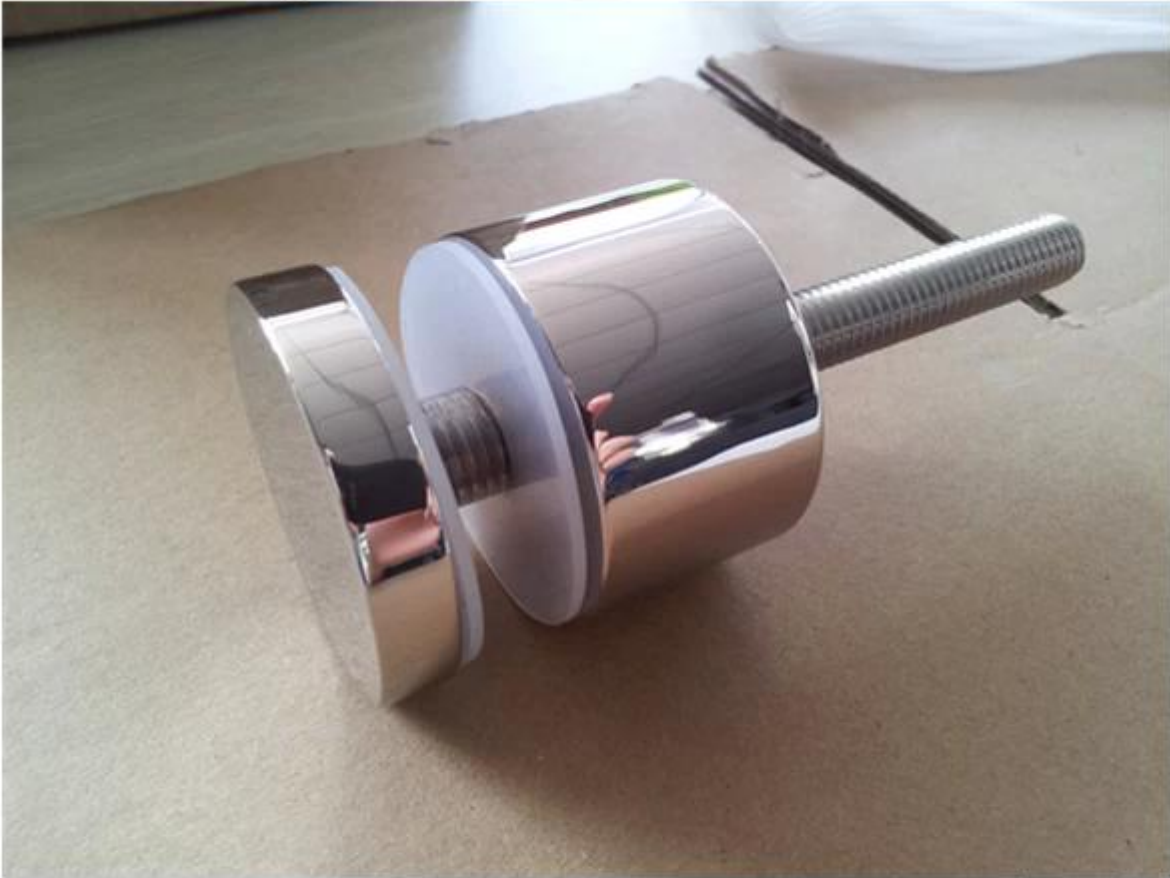
Types:

Stainless steel glass standoff bracket;

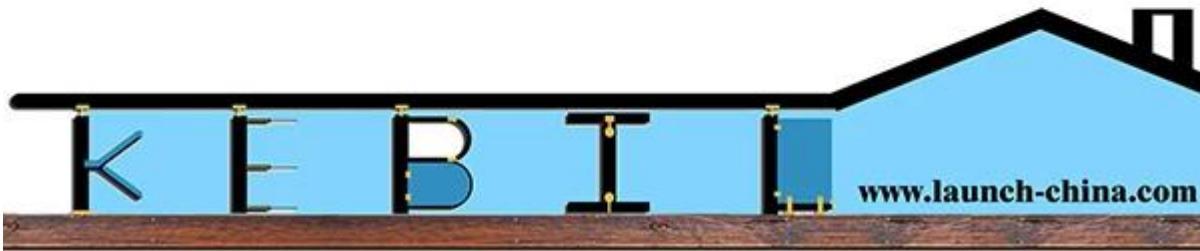


SF-50 GLASS STANDOFF

Size: 50x12+50x30+M12 bolt for steel, concrete or wood;



Wood screw



Comparison

Staircase project before and after installation;



Frameless glass railing with glass standoff bracket used at staircase, makes your home more clear, wider and morden.