

285mm square core drill glass spigot for frameless pool fence

SCM-2, Square core drill glass spigot

Material: stainless steel 304/316/316L/Duplex 2205;

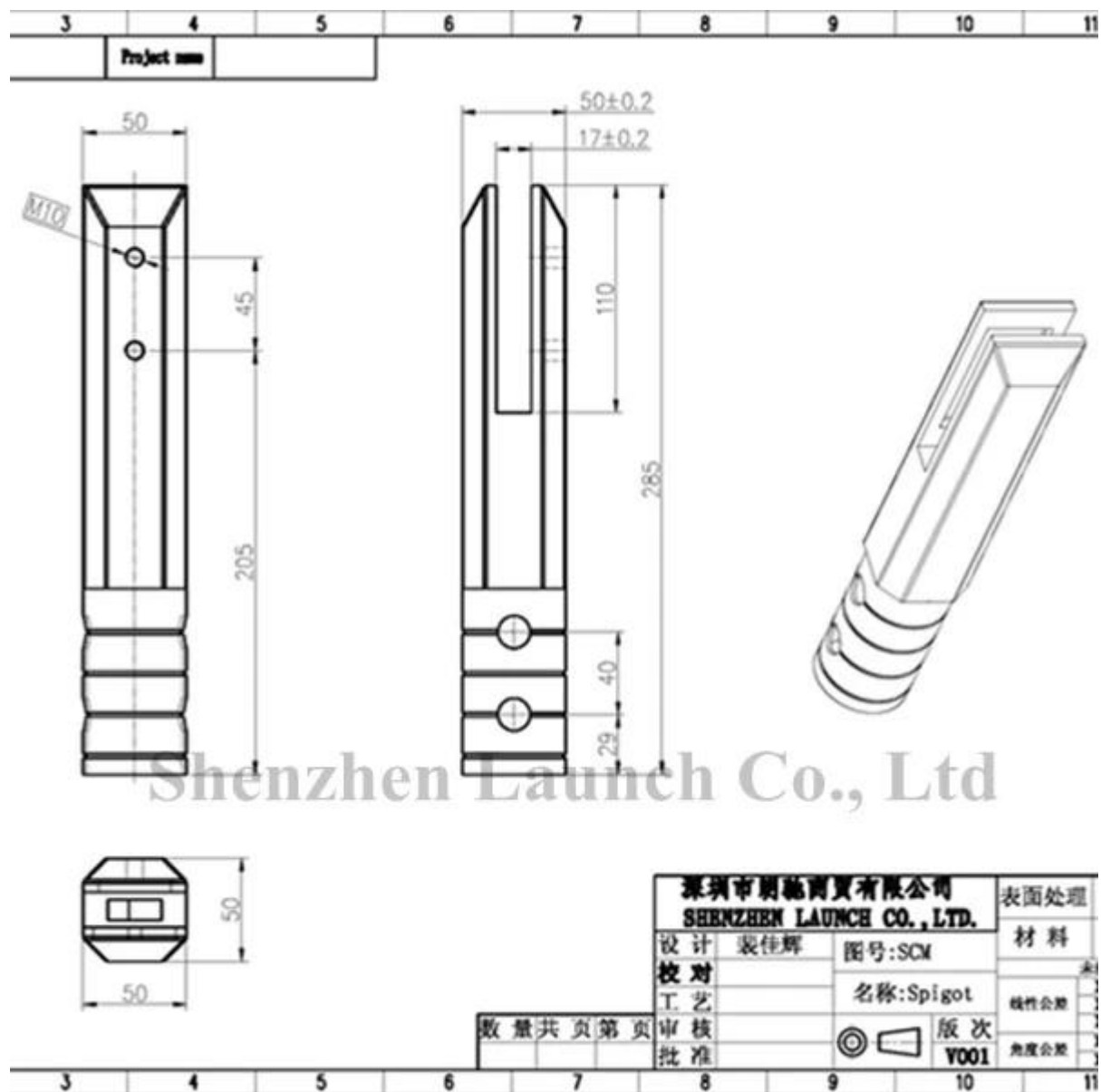
Surface: satin brushed or mirror polished;

Size: 50mm, 285mm height; 110mm gap between bottom glass to floor;

Glass thickness: 10mm - 13,52mm tempered or laminated glass for buildings;



Drawing of size:



Surface treatment comparison;

SCM



Mirror



Satin

Package:

each piece with foam bag put in 53x53x290mm white box;
10 pieces in 305x290x130mm strong carton box;



SCM-2 MIRROR

Project
outdoor glass pool fence, railing height 42"



**Core drill, means in ground installation, not removable.
It can be used at pool fence area, deck, terrace as edge protective railing,
especially for children.**

**Clear see through makes no obstacle for the view, and it will let you have a clear
view of outside danger.**

**Please email us if any need of question at sales04@launch-china.cn
your inquiry will be reply within 8 hours.**