

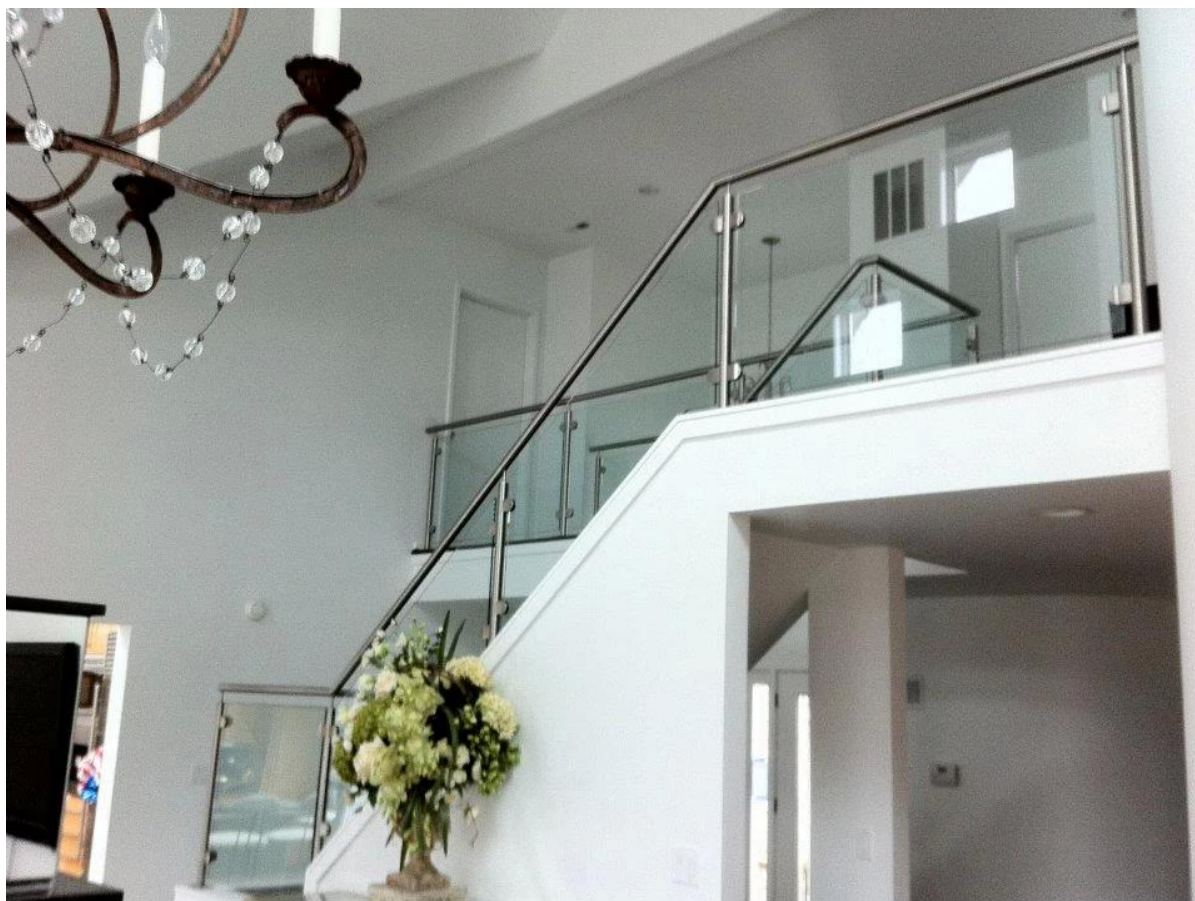
D type glass clamps are used to hold 3/8" thickness glass panels , shenzhen launch supplies stainless steel 304 D clamp for interior use and stainless steel 316 clamps for outdoor use .

Photo for G102 :



G102

D clamp installed on glass railings :



Minimum order quantity : 10 pcs

Packing information :

1 pc D clamp packed into a small box , 10 pcs into a carton .



Sea port : Shenzhen

How to deliver ?

- If you quantity is small, we can send the order by DHL , UPS , FedEx , post etc.
- If order quantity is over 1000 pcs , we can arrange sea freight to your sea port .