

316 stainless steel glass handrail bracket for stair railings for 1/2" thickness glass panels .

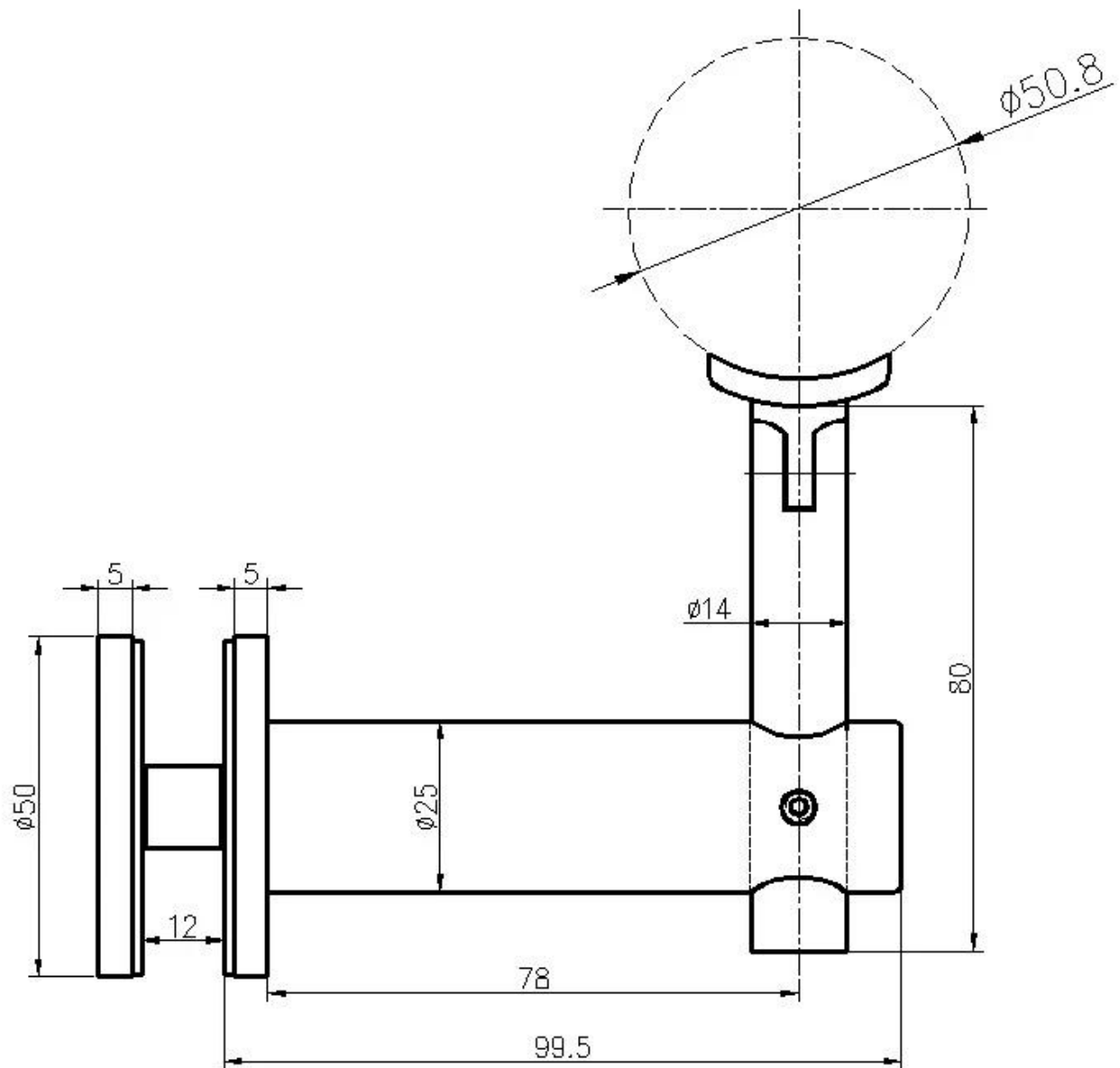
Features of Glass handrail bracket , model # P707-

1. Material : 316 stainless steel
2. Finish : satin or mirror
3. Glass mount , glass panel thickness from 8mm to 12mm
4. For handrail tube size 38.1mm 42.4mm 50.8mm
5. Applied on glass railings for stairs , balcony , deck etc .

Photos of Glass handrail bracket , model # P707-



Drawing for Glass handrail bracket , model # P707-

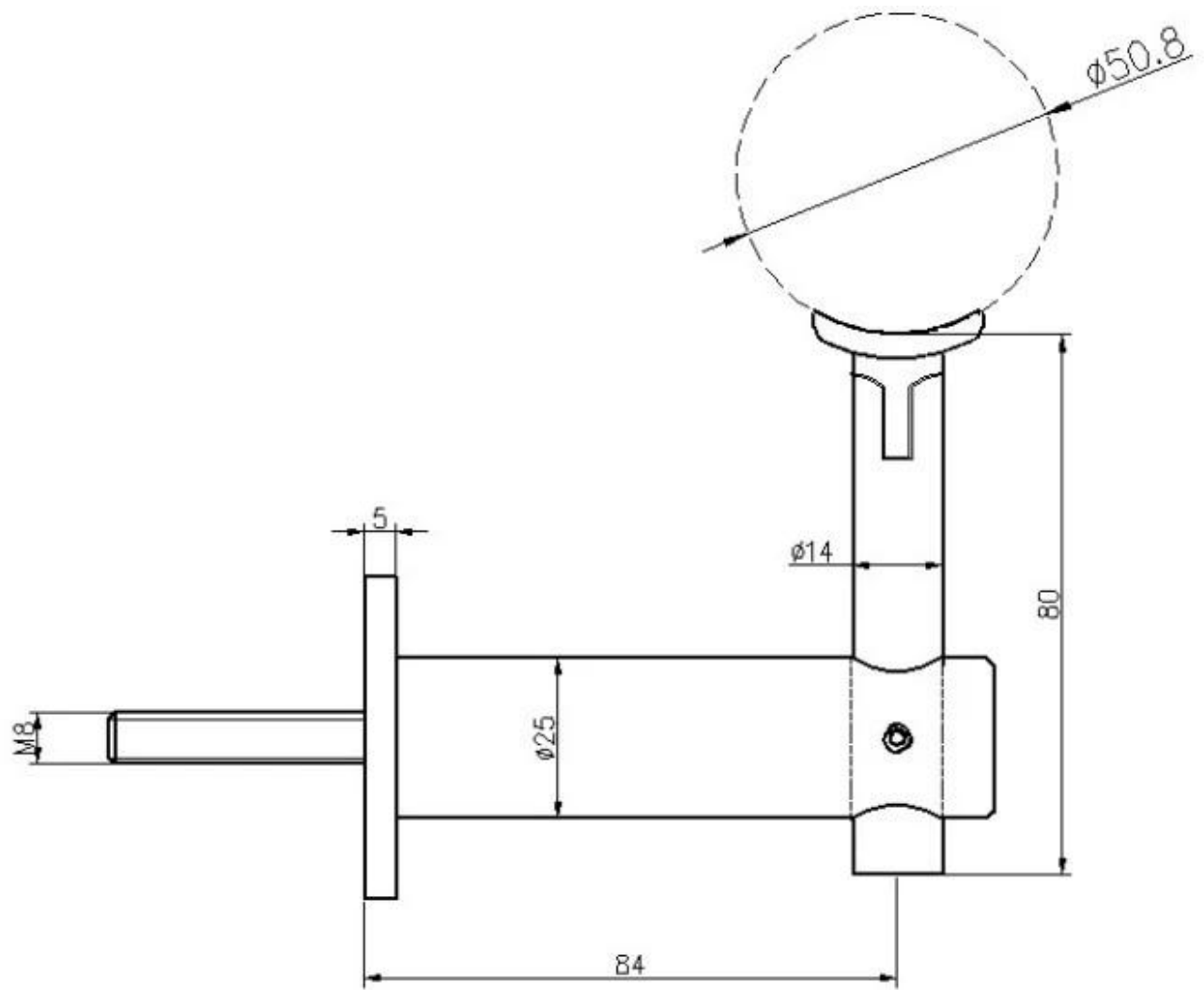


We also have wall mount handrail bracket available as well , model # P706



Model No.P706
Handrail Bracket

Drawing for wall handrail bracket , P706



Project photos of Glass handrail bracket , model # P707-



