

## WHY CHOOSE US ?

**Shenzhen Launch is verified by SGS group , SGS report number 19536352\_P+T . We are a reliable supplier for SS railing hardwares .**

## Alibaba.com Gold Plus Supplier

### Main Product Lines Verification Report

*Presented to*

**Shenzhen Launch Co., Ltd.**

深圳市朗驰商贸有限公司

Company Address	B5003, Building 3, Yilida Building, No. 1092 Nanshan Avenue, Dengliang Community, Nanshan Street, Nanshan District, Shenzhen City, Guangdong Province, China
Consigner of Assessment:	Alibaba
Gold Supplier Member ID:	launch168
Gold Supplier Company Name:	Shenzhen Launch Co., Ltd.
Contact Person:	Mr. Binfeng Gao
Phone Number:	0086-13802569770
Fax Number:	0086-755-86372611
Email:	gbf999@china.com
Website Address (URL):	<a href="http://launch-china.en.alibaba.com">http://launch-china.en.alibaba.com</a>

*Service Provided by SGS  
Report No.: 19536352\_P+T*



---



Alibaba.com Gold Plus Supplier  
Main Product Lines Verification

Report No.: 19536352\_P+T

Cutting Machine	XN	4	3	Acceptable
Laser Cutting Machine	MPS-3015D	1	2	Acceptable
4.5M CNC Processing Center	PRATIC	1	3	Acceptable
CNC Processing Meter	JNC	8	3	Acceptable
Shearing Machine	6X2500	2	3	Acceptable
Bending Machine	AG-1030II	4	3	Acceptable
Punching Machine	N/A	36	6	Acceptable
Coating Line	N/A	1	1.5	Acceptable
Lathing Machine	N/A	1	6	Acceptable
Grinding Machine	LITAO	4	6	Acceptable
Milling Machine	TONG ZHENG	2	6	Acceptable
Welding Machine	N/A	5	5	Acceptable
Tube Processing Machine	N/A	2	5	Acceptable
Cutting Machine	Laser Cutting Machine		4.5M CNC Processing Center	
				
CNC Processing Meter	Shearing Machine		Bending Machine	
				
Punching Machine	Coating Line		Lathing Machine	
				

Report No:	19536352_P+T	Report Date:	09/Oct./2019	Assessed By	Wlof Wang
CONFIDENTIAL		All Rights Reserved		Page No:	6 of 10






Grinding Machine	Milling Machine	Welding Machine			
					
Tube Processing Machine	N/A	N/A			
	N/A	N/A			
1.5 Testing Machinery					
Machine Name	Brand & Model No.	Quantity	Number of Year(s) Used	Condition	
TMM	VM300	1	7	Acceptable	
TMM	N/A		N/A		
	N/A		N/A		
1.6 Production Flow					
No	Production Process	No	Production Process	No	Production Process
1		2		3	
	Raw Materials		Cutting		Laser Cutting
4		5		6	

Report No:	19536352_P+T	Report Date:	09/Oct./2019	Assessed By	Wlof Wang
CONFIDENTIAL		All Rights Reserved		Page No:	7 of 10



Alibaba.com Gold Plus Supplier  
Main Product Lines Verification

Report No.: 19536352\_P+T

	CNC Processing		CNC Processing		Shearing
7		8		9	
	Punching		Bending		Tapping
10		11		12	
	Welding		Coating		Assembly and Packing
13		14	N/A	15	N/A
	Packed Products		N/A		N/A

1.7 Export Market Distribution (Previous Year)		
Market	Revenue (USD)	Total Revenue (%)
North America	Confidential	40
South America	Confidential	2
Eastern Europe	Confidential	5
Southeast Asia	Confidential	2
Africa	Confidential	2
Oceania	Confidential	15
Mid East	Confidential	10
Eastern Asia	Confidential	0.5
Western Europe	Confidential	8
Central America	Confidential	1
Northern Europe	Confidential	10

Report No:	19536352_P+T	Report Date:	09/Oct./2019	Assessed By	Wlof Wang
CONFIDENTIAL		All Rights Reserved		Page No:	8 of 10

## Product description -

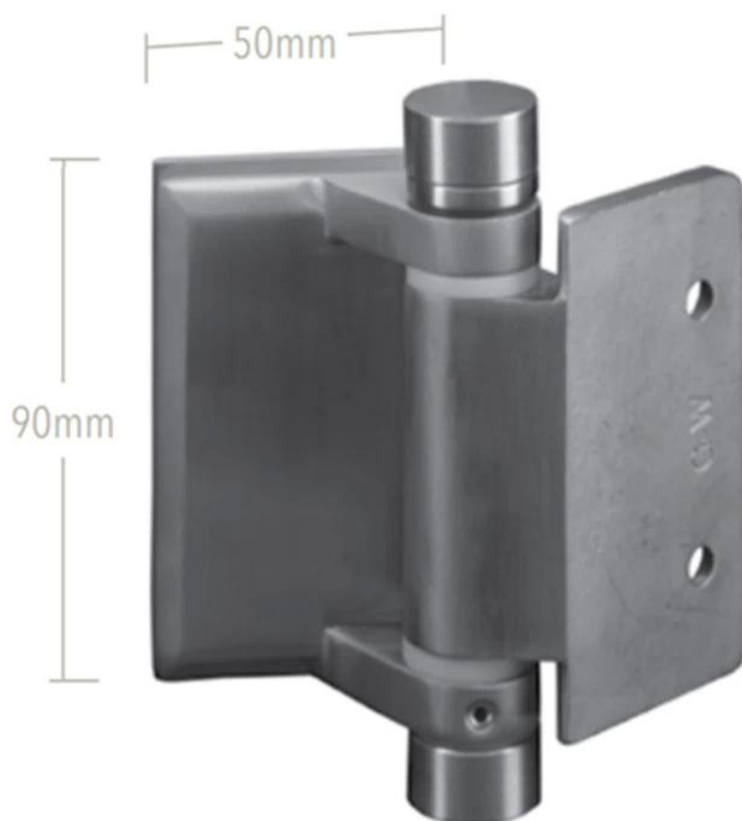
Item	wall to glass hinge
Code	G-W
Material	316 SS made by casting
Finish	polished or brushed
Glass thickness	8-12mm
Max. door weight	30kg

Weight	1.1KG/pc
1 Pair	2 pcs ,
packing	2 pcs into a white designed box , with foam packaging
MOQ	1 pair

***Wall to glass hinge with flat cap on both ends -***



## GLASS TO WALL / SQUARE POST



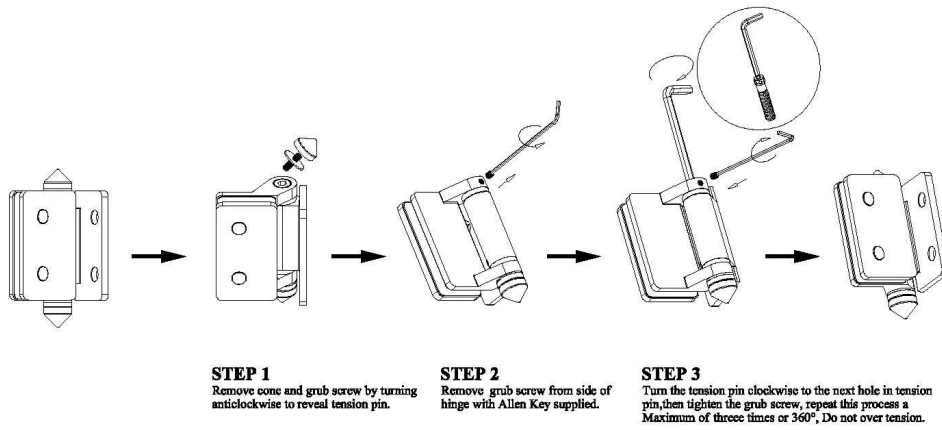
***wall to glass hinge with coned cap on both ends -***



***Installation instructions-***



## Instructions for adjusting tension on Glass to Wall hinge

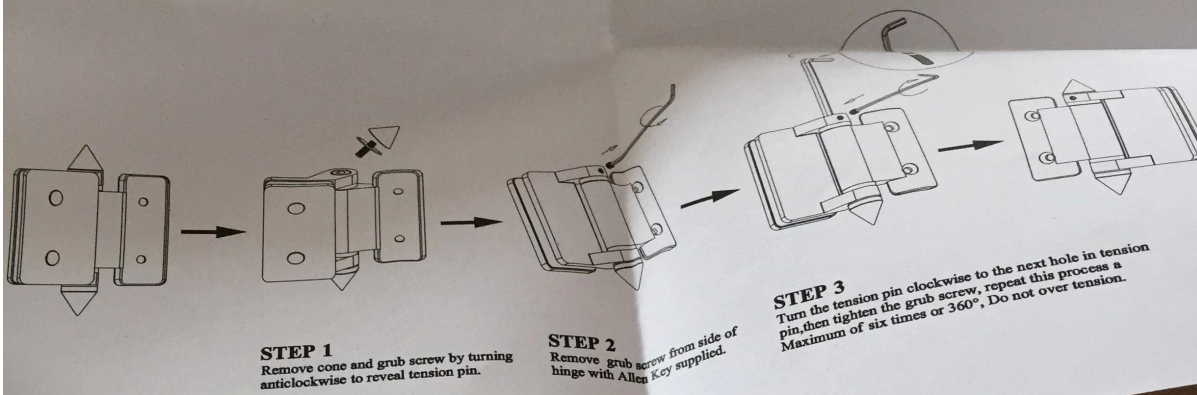


***Production & packaging-***





# Instructions for adjusting tension on Glass to Round post hinge







**Other hinge models -**

**Glass to glass hinge-**



***Glass to round post hinge-***



***Customer project photos -***









***About Shenzhen Launch-***



Shenzhen Launch Co., Ltd was established in 2004, located at Nanshan District, Shenzhen, and one hour by car from Hongkong International Airport. Our main product is high-grade building materials includes stainless steel balustrade post, staircase handrail, balcony guardrail, swimming pool fence and other high-grade building materials. All the products are designed strictly according to the high-end market requirements. We have our own factory in Tangxia Town, Dongguan, has a variety of precision equipment more than 50 sets: CNC lathe, milling machine, punching machine, pipe cutter, argon welder, drilling machine, polisher, etc. which can provide customers with complete product processing services. With the German SPECTRO Spectrometer, we insist on testing every batch of materials to ensure that the material is highly qualified. We also have hardness gauge, secondary element and other test equipment to ensure the products meets customers' requirements.

## ABOUT US

### Our Team



## OUR ADVANTAGE

Please do not hesitate to contact us if you have any requirement regarding our production lines, you can expect a timely reply with professional solutions!



Own factory, shortest lead time.



Can help customers design product drawings based on customer ideas and design engineering installation drawing according to the customer site sketch.



Sample order, trial order acceptable.



Provide material test report to ensure that the material is qualified.



13 years of industry experience, we can help customers recommend the best solution to help customers save cost.

## OUR FACTORY

More than 13 years experience in hardware industry design and processing, we can provide customized services from design to the sample and small batch trial production.



# OUR CERTIFICATE

With premium quality, competitive price and superior service, we won a lot of customers' favor.  
Our products are popular in North America, European and Australia.





# ***PRODUCTION PROCESS***



Casting



CNC lathe



CNC Milling



Stamping



Drilling & Tapping



Polishing





# ***PACKAGING & DELIVERY***



# PAYMENT & TRANSPORTATION

Welcome Alibaba Trade Assurance Order!



- 1 Start an order
- 2 Negotiate terms with our sales service & confirm order
- 3 Make payment
- 4 Alibaba provide full assurance



## FAQ

### 1. What materials do you have?

SS304, SS316, SS316L, Duplex 2205, etc.

### 2. Can you send me your whole price list?

Sorry, as the price related to many factors, such as quantity, material type, surface treatment and so on, we will offer you exact quote after we confirm your detailed requirements.

### 3. Do you offer OEM & ODM service?

Yes, we can make the products according to your technical drawings or samples, we are professional in investment casting, die casting, stamping, CNC machining, etc.

### 4. What kind of payment you accept?

T/T, L/C, PayPal, West Union, etc.

### 5. What is your payment term?

TT(30/70) or LC at sight.

### 6. What is your delivery time?

Within 5 workdays for hot-sale items, 15-25 workdays for batch orders.

### 7. Do you offer after-sales service?

Of course, any question after you purchase our products, we will get back to you within 24 hours.

## CONTACT US

WELCOME TO CONTACT US. WE WILL DO OUR BEST TO HELP YOU!



CELIA CHEN



Email : sales01@launch-china.cn



Skype : launch-01



Mob. 86-13590273543

