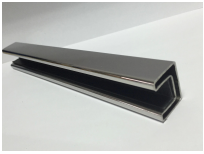









## Description

stainless steel 316L, 8 k polished or satin square handrail tube

Pictures	Item	size	net weight	Packaging	Application
	square handrail tube	25X20mm 5.8 m\length	6 kg\5.8 m	cardboard tube or wood container	<a href="#">Balcony railing glass railing the deck</a> <a href="#">handrail glass railing the staircase</a> <a href="#">rectangular glass balustrade</a> <a href="#">Garden the fence,</a>
	Rubber groove	14x14mm 1.8 m\length	\		
	180 ° connector	25x20mm handrail tube	52g		
	90 °connector		130 g		
	end cap		33g		
	handrail tube-wall connector		82 g		
	vertical connector		86g		
	horizontal connector		135 g		

- For commercial and modern house home design both
- For wholesale and retail both
- Other the size handrail tube: available (we are factory)
- Sample: always available

A set of square handrail tube and fittings

**20\*25mm slot handrail**

**5.8 m per length**



180 degree joiner



90 degree joiner



Vertical adjustable joiner



Horizontal I adjustable joiner



Wall to handrail joiner



End cap



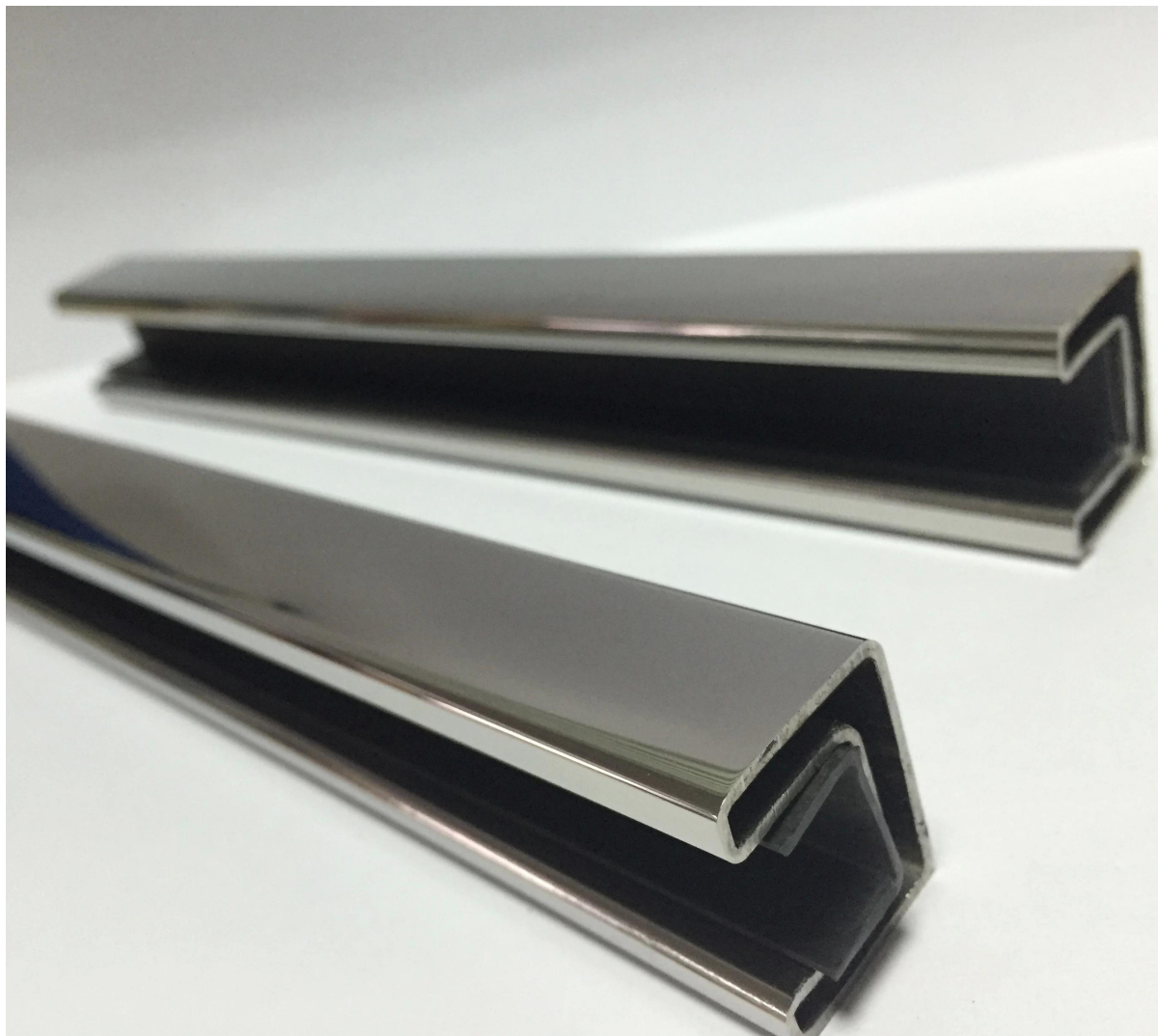
Details













## Project

Square handrail tube and [Round spigot](#) for balcony glass railing design



Square handrail tube and [square glass spigot](#) for deck glass railing



## Packaging and delivery

-Delivery time: 15-20 days by sea

--Regular lead time: 10-15 days, if the goods are in stock, 20-25 days if the goods are not in stock. It depends on quantity.

Safe cardboard sleeve package



Wood container packaging



Factory & Certification







## Shenzhen Launch Co.,Ltd



[www.launch-china.cn](http://www.launch-china.cn)

Customer inspection



Need a quote or have any questions, please leave a message.

Or contact me with the information below. will get back to you as soon as possible!

You can also add me on wchat: 973219879 or what's APP: + 86-13530506265 for any urgent enquiry.



深圳市朗驰商贸有限公司  
SHENZHEN LAUNCH CO., LTD.

朗驰国际有限公司  
LAUNCH INTERNATIONAL LIMITED.

**董 萍** Doris Dong

Senior Sales Representative

☎ (86) 135 3050 6265

---

**深圳市南山区南山大道1092号亿利达大厦B区3栋5003**

Room 5003, Building 3, Yilida Building, No.1092  
Nanshan Road, Nanshan District, Shenzhen, China  
postal code 518054

---

☎ (86-755) 8603 7559

☎ (86-755) 8637 2611

✉ sales04@launch-china.cn

💻 www.launch-china.com

www.chinabalustrade.com