

Description

Glass clamp model number: PV-90

Material: stainless steel 316

Finish: polished or brushed

Application: to hold 90 degree corner glass panel

Size: please see below drawing

For glass thickness: 12-15mm glass

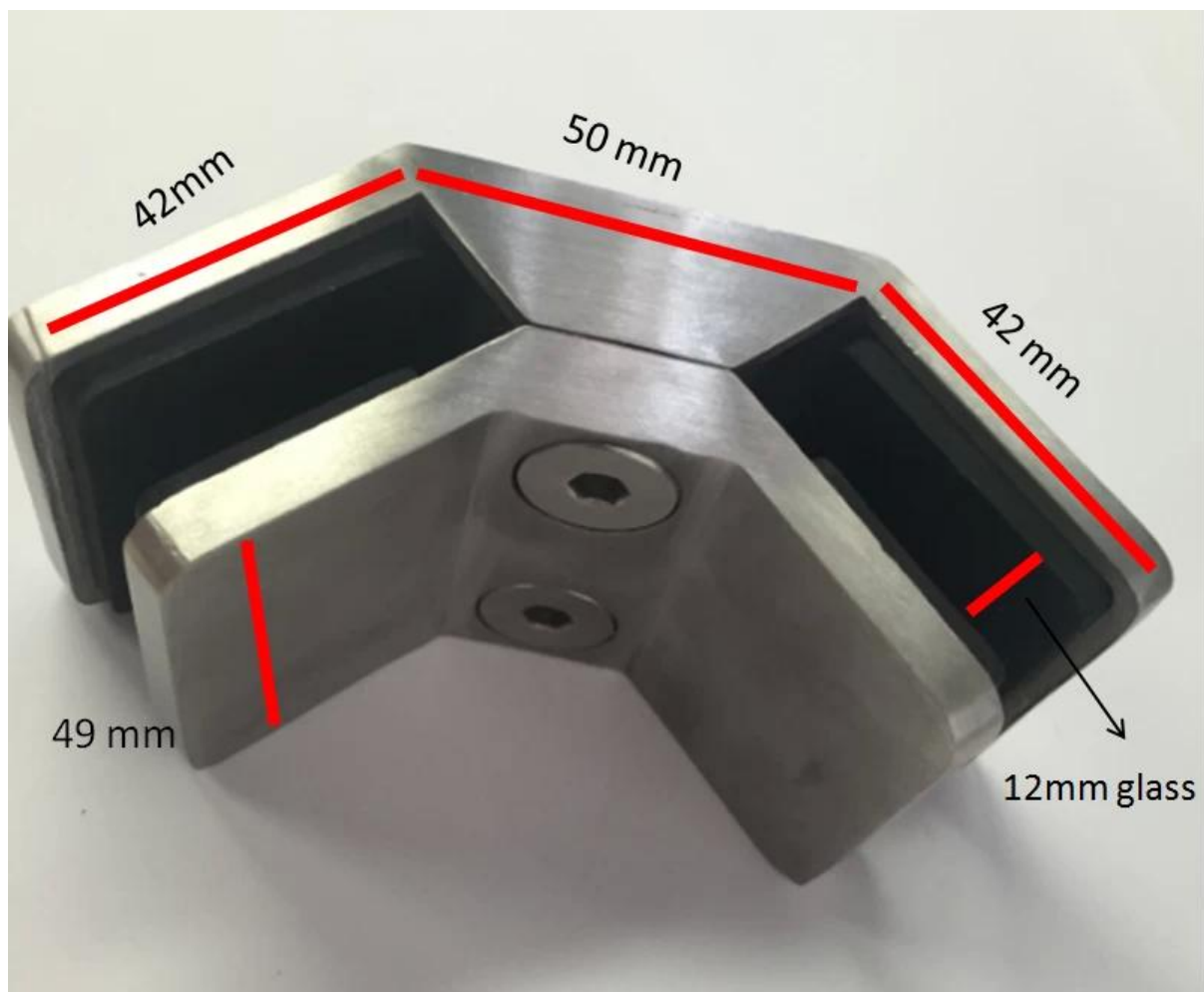
Net weight: 41g

Manufacture method: casting (high quality)

Minimum order quantity: one piece

For modern home design and commercial building glass railing both

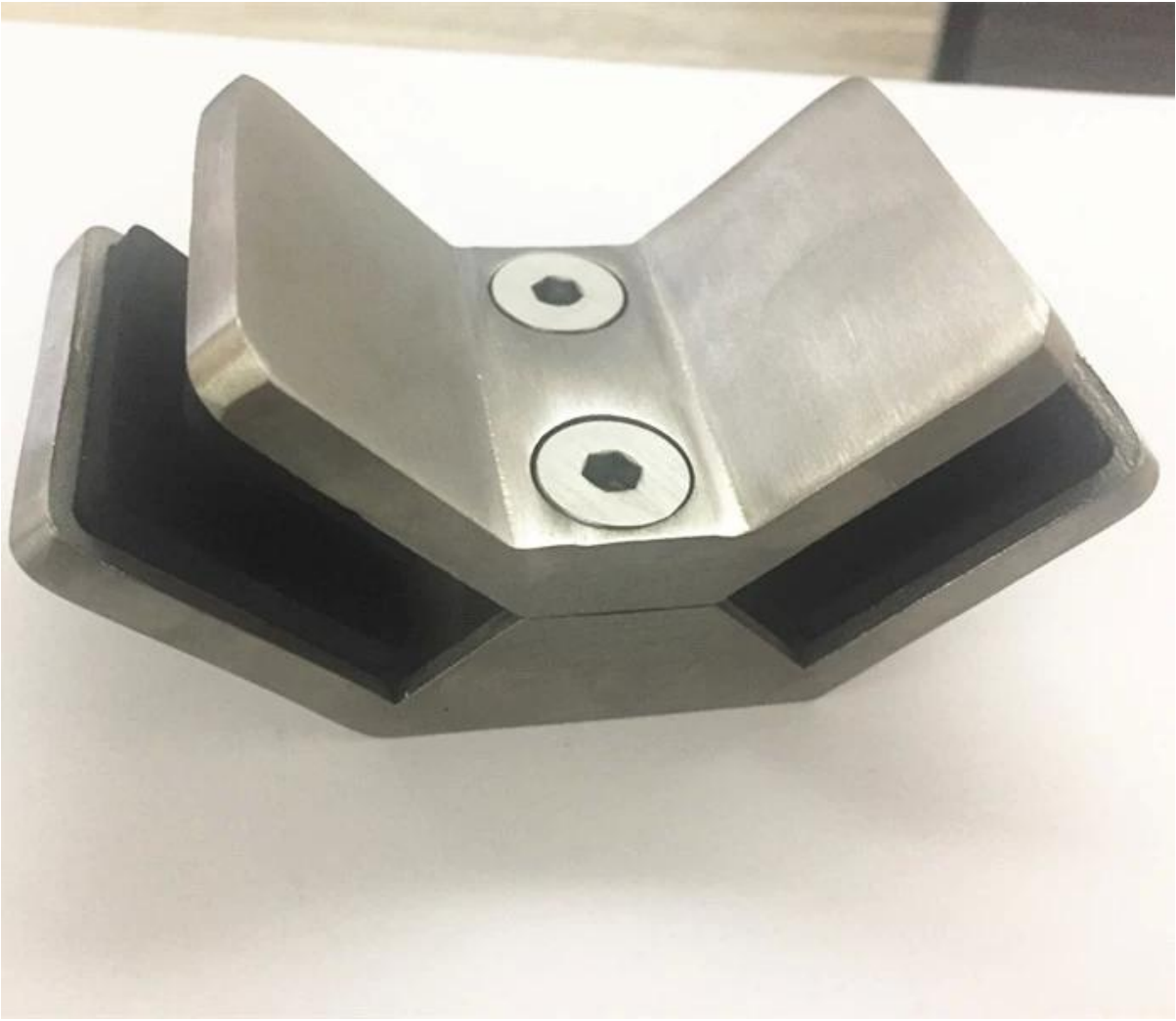
OEM is welcome



Products details

Brushed finish





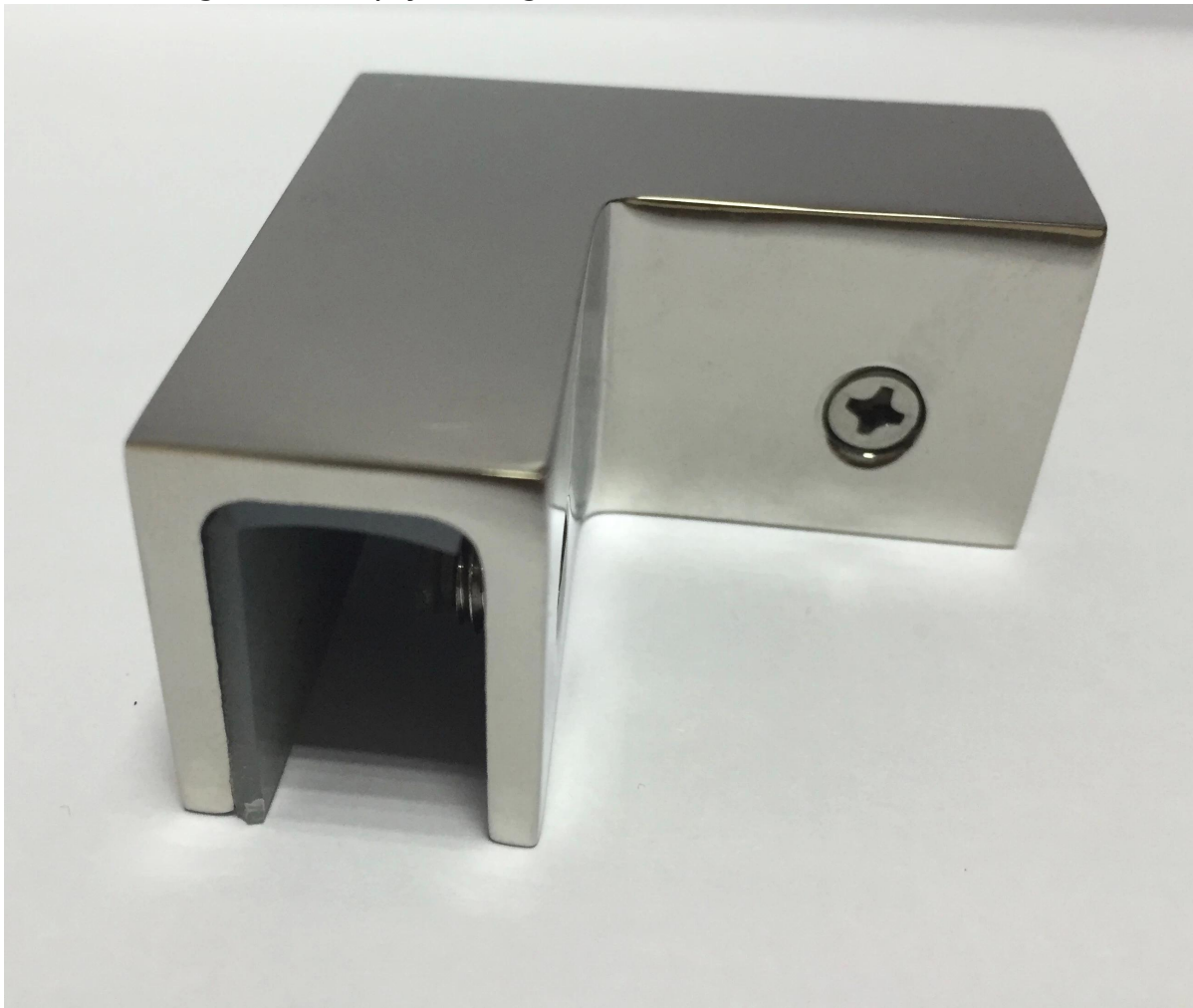
Polished finish



Projects



Associated glass clamp you might be interested in [CB-90](#)



Delivery & Packaging

Delivery: 3-5 days by express

Packing: one pc into one plastic bag. 10 pcs into one box.

Regular lead time: about 10 days after payment. (It depends on quantity)

Product process:

OUR FACTORY

More than 13 years experience in hardware industry design and processing, we can provide customized services from design to the sample and small batch trial production.



PRODUCTION PROCESS



Casting



CNC lathe



CNC Milling



Stamping



Drilling & Tapping



Polishing



Contact details:

Email: sales05@launch-china.cn
Tell/whatsapp: 0086 13129593615