

[90 degree corner glass clamps in between glass panels](#) used at the corner

- Features for [stainless steel 90 degree corner glass clamps in between glass panels](#)

-90 degree , used at the corner in between 2 glass panels

- made by precision casting

-316 stainless steel

- brushed finish

- Photos for [90 degree corner glass clamps](#) as below

Back view. of 90 degree stainless steel glass clamp



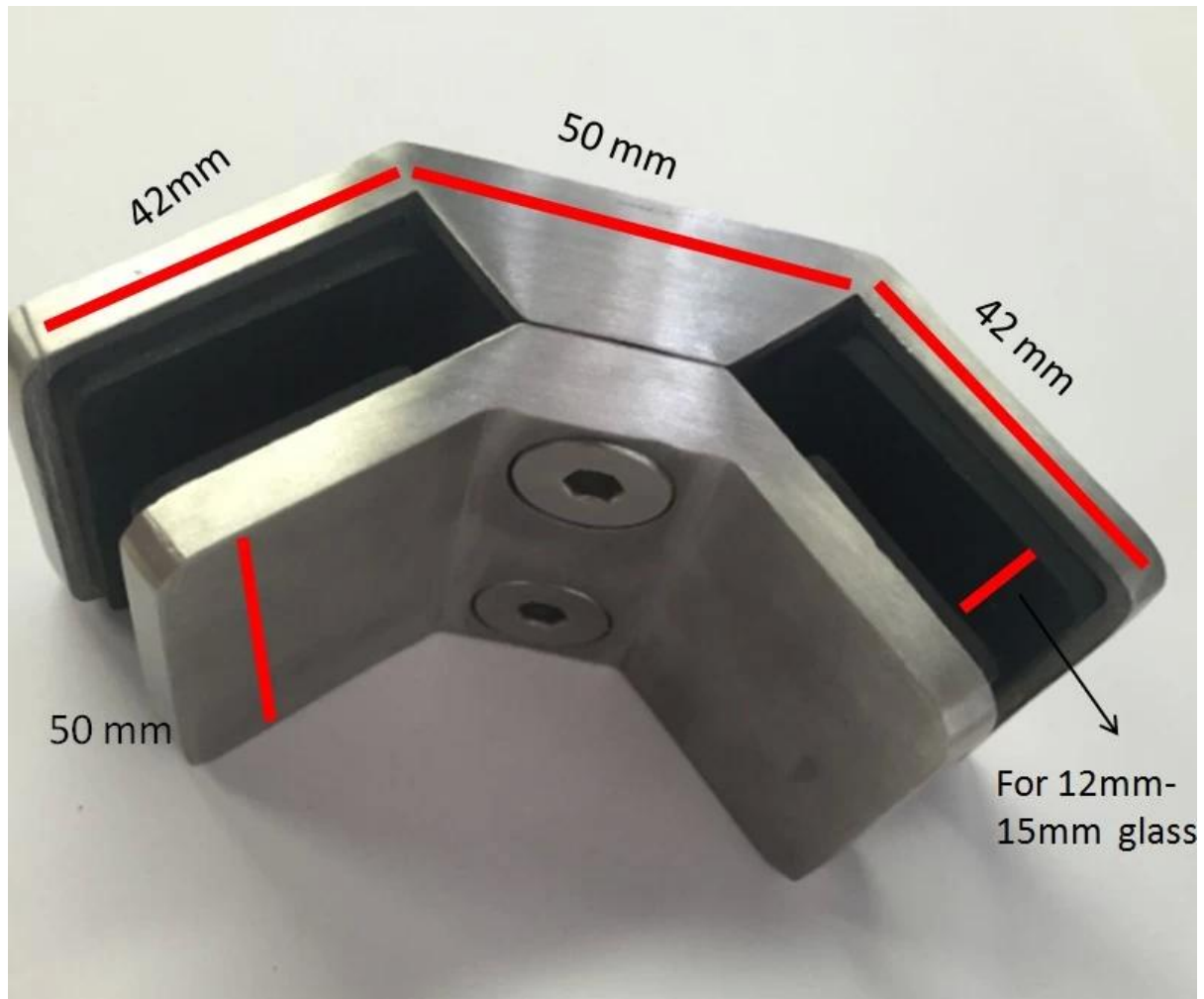
bottom view. of 90 degree stainless steel glass clamp



side view . of 90 degree stainless steel glass clamp



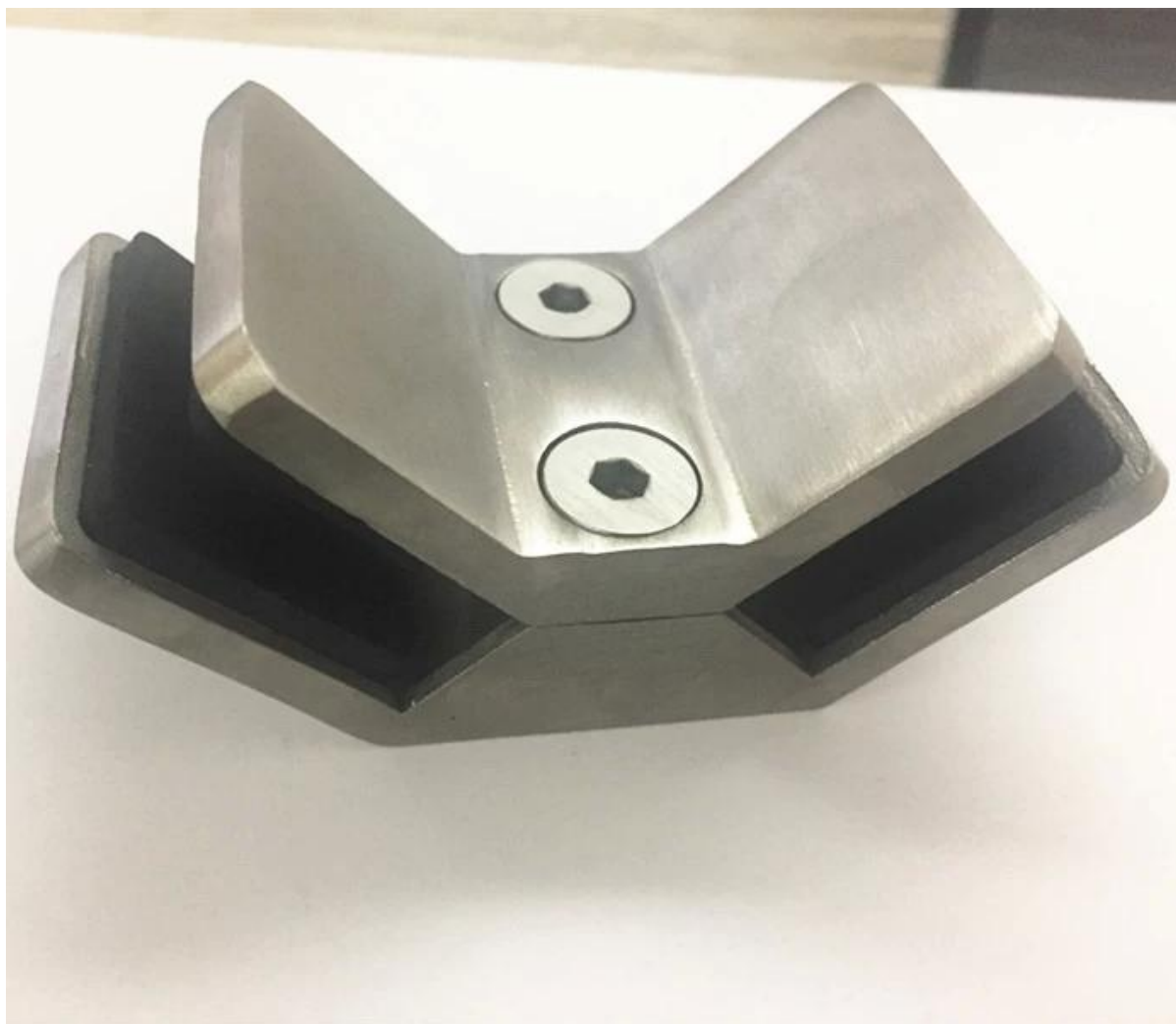
-Dimensions for stainless steel glass clamp for 12-15mm glass 90 degree



More photos of 90 degree corner glass clamps







Feel free to contact us for quote !