

## Description

--[Glass clamp](#) model number: **PV-90**

--Material: stainless steel 316

--Finish: polished or brushed

--Application: to hold 90 degree corner glass panel

--Size: please see below drawing

--For glass thickness: **12-15mm glass**

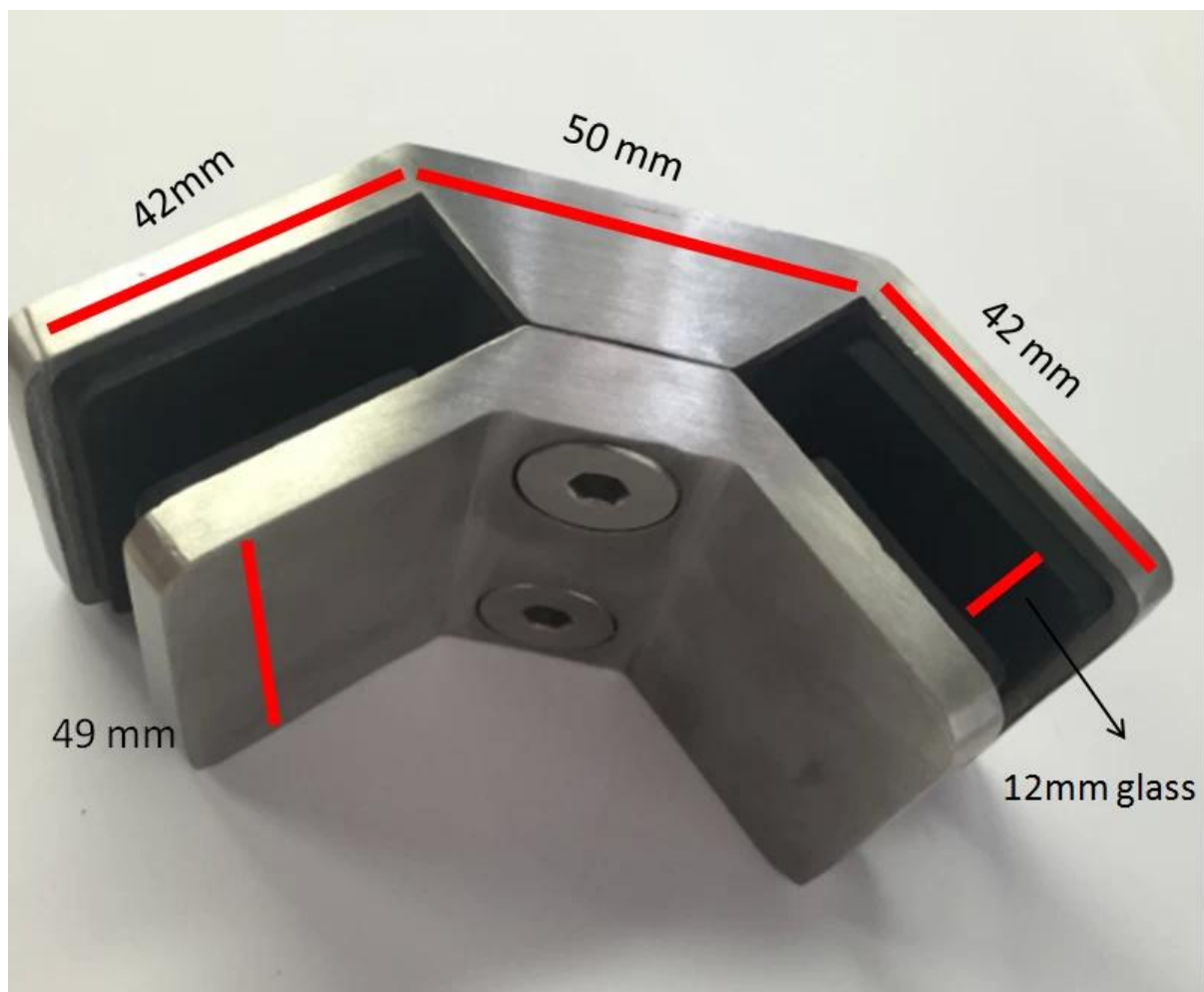
--Net weight: 41g

--Manufacture method: casting (high quality)

--Minimum order quantity: one piece

--For modern home design and commercial building glass railing both

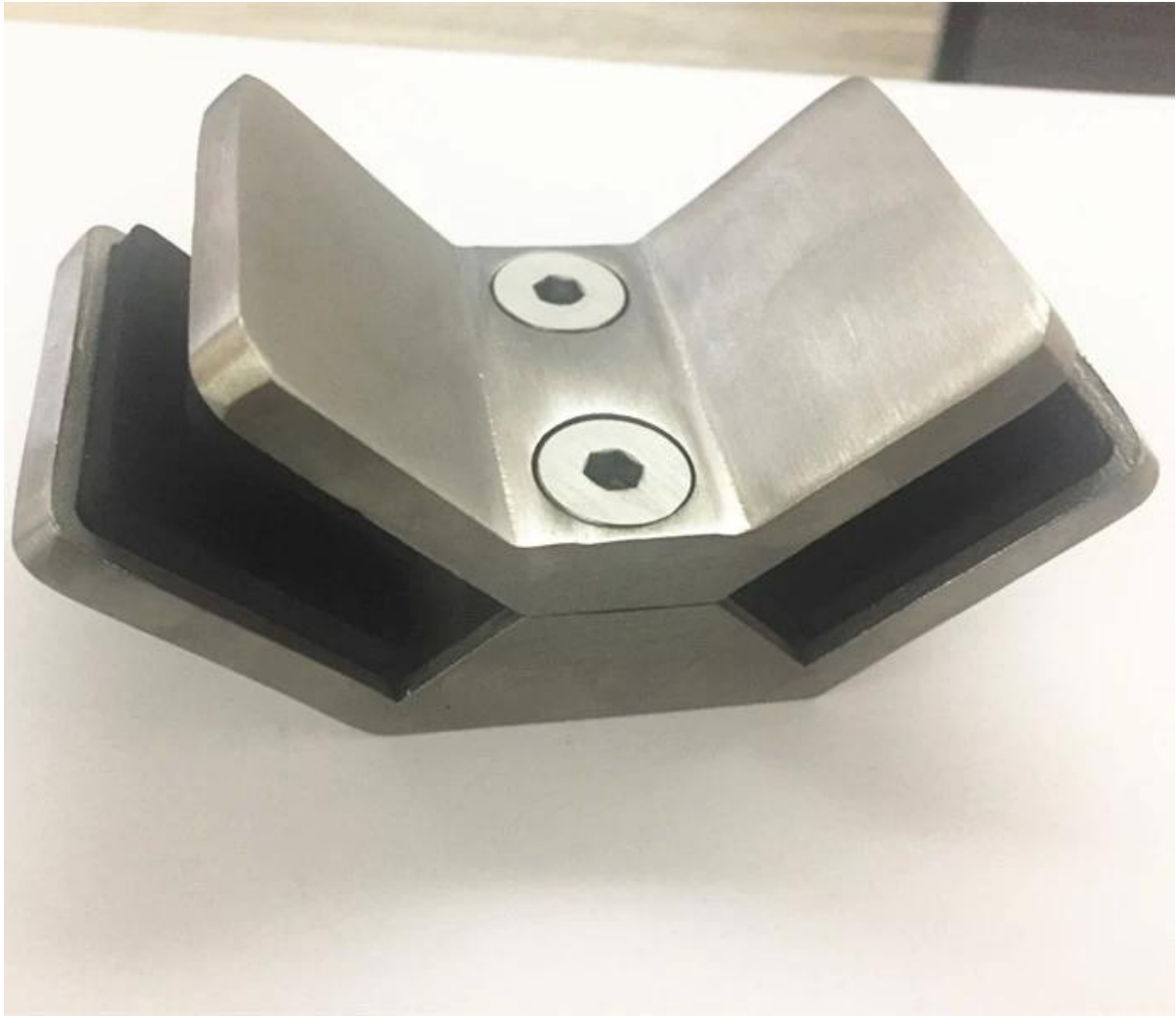
--OEM is welcome



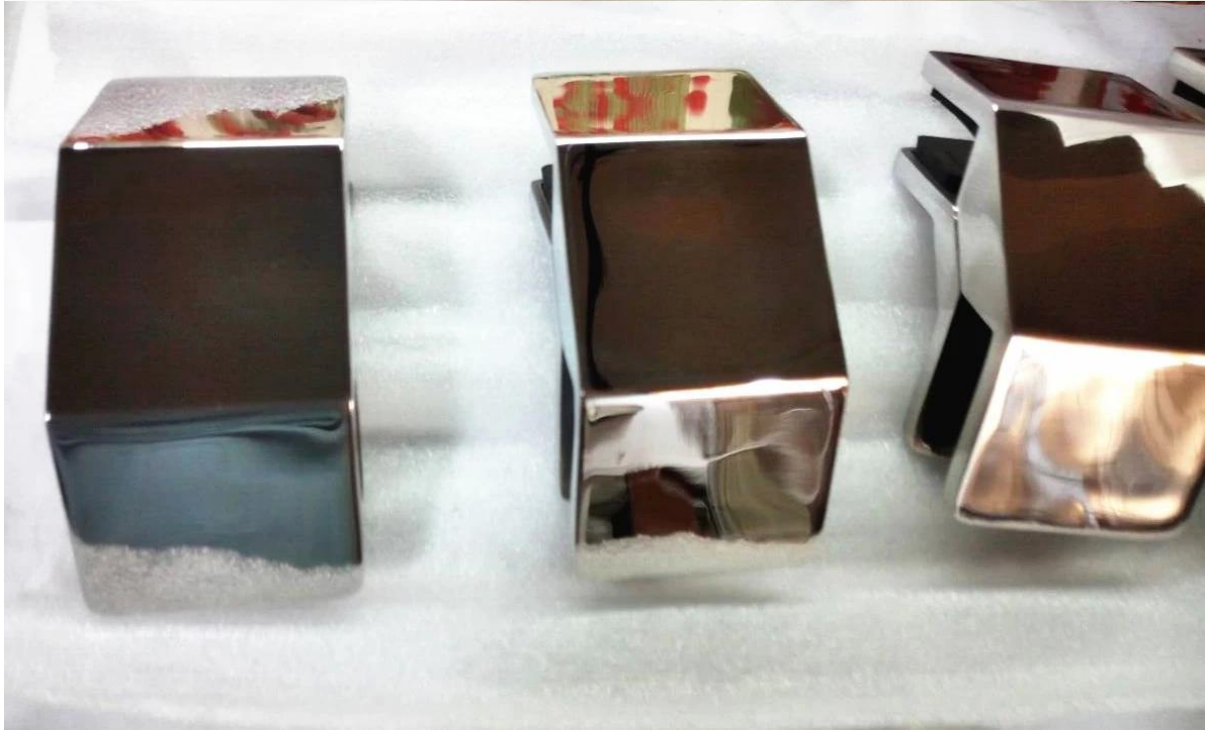
## Products details

Brushed finish





Polished finish

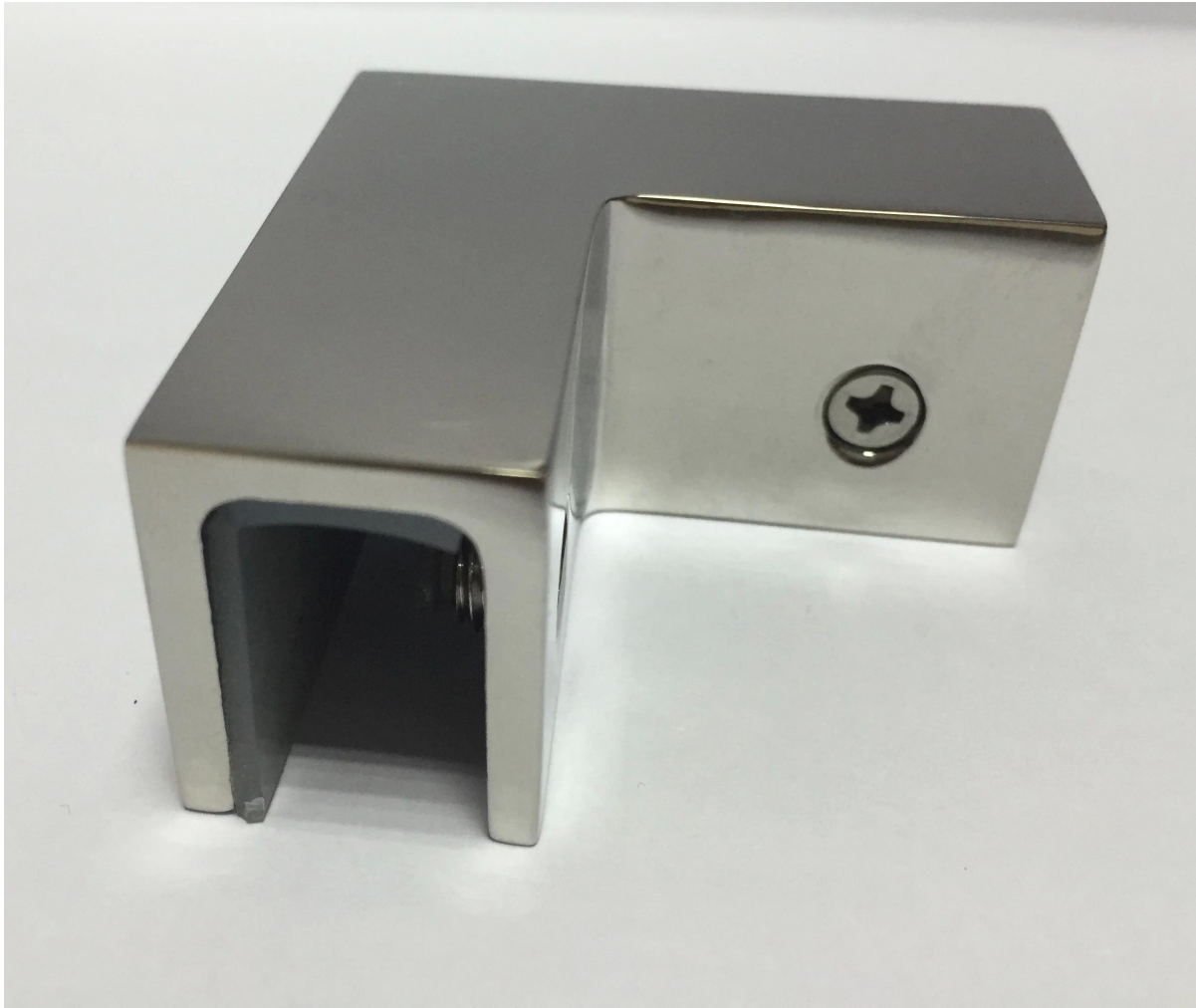


Projects





Associated glass clamp you might be interested in [CB-90](#)



## Delivery & Packaging

Delivery: 3-5 days by express

Packing: one pc into one plastic bag. 10 pcs into one box.

Regular lead time: about 10 days after payment. ( It depends on quantity)

Need a quote or any questions, please leave a message.

Or contact me as below info. will get back to you as soon as possible!

For any urgent enquiry, please get in touch on wechat: 973219879 or what's up: +86 13530506265

KEBIL 科比奥®

深圳市朗驰商贸有限公司  
SHENZHEN LAUNCH CO., LTD.

朗驰国际有限公司  
LAUNCH INTERNATIONAL LIMITED.

**董 萍** Doris Dong

Senior Sales Representative

☎ (86) 135 3050 6265

---

深圳市南山区南山大道1092号亿利达大厦B区3栋5003

Room 5003, Building 3, Yilida Building, No.1092  
Nanshan Road, Nanshan District, Shenzhen, China  
postal code 518054

---

☎ (86-755) 8603 7559

☎ (86-755) 8637 2611

✉ sales04@launch-china.cn

🌐 www.launch-china.com

www.chinabalustrade.com