

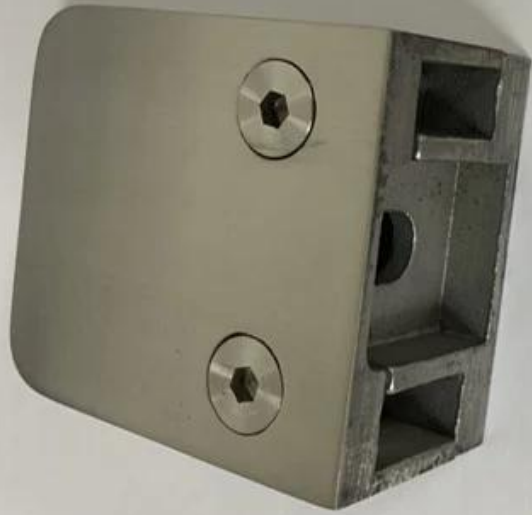
AISI stainless steel 316 glass clamp holders for glass balustrade handrails for 8-12mm thickness tempered glass panels . Square D type glass clamps can be in mirror , satin , black finish as per requirements .

Features of glass clamp -

1. Model No. G102
2. Material SS 304 for interior use , SS316 for outdoor use
3. Finish : satin , mirror , black , wood color
4. size 44*44*25mm flat mount
5. size 48*44*25mm
6. For glass thickness 8mm 10mm 12mm
7. Can be mounted onto post /wall /wood

Photos of square D type glass clamp-







KEBIL 科比奥®



SX-7001D

386.7

g
lb
oz
s

NET
PCS

UNIT

教学用

ON/OFF

TOPWE

ZERO
TARE

Electronic Compact Scale





Glass clamp mounted to stainless steel posts-



Glass clamp mounted to concrete walls-



Glass clamp mounted to wood handrails-



Other models of glass clamps-

STAINLESS STEEL BALUSTRADE AND FITTINGS

KEBIL 科比奥 SHENZHEN LAUNCH CO., LTD

GLASS CLAMP



| Part No. | Material | Finish | Size | Glass thickness |
|----------|------------|----------|--------------|-----------------|
| • G102 | • AISI 304 | • Satin | • 44x44x25mm | • 8-10mm |
| • G102R | • AISI 316 | • Mirror | • 44x44x25mm | |



| Part No. | Material | Finish | Size | Glass thickness |
|----------|------------|----------|--------------|-----------------|
| • G103 | • AISI 304 | • Satin | • 50x45x22mm | • 8-8mm |
| • G103R | • AISI 316 | • Mirror | • 52x45x22mm | |



| Part No. | Material | Finish | Size | Glass thickness |
|----------|------------|----------|--------------|-----------------|
| • G104 | • AISI 304 | • Satin | • 50x45x26mm | • 8-10mm |
| • G104R | • AISI 316 | • Mirror | • 52x45x26mm | |



| Part No. | Material | Finish | Size | Glass thickness |
|----------|------------|----------|--------------|-----------------|
| • G105 | • AISI 304 | • Satin | • 55x45x28mm | • 10-12mm |
| • G105R | • AISI 316 | • Mirror | • 58x45x28mm | |



| Part No. | Material | Finish | Size | Glass thickness |
|----------|------------|----------|--------------|-----------------------------|
| • G106 | • AISI 304 | • Satin | • 50x45x25mm | • 6-8mm • Used at corner |
| • G106R | • AISI 316 | • Mirror | • 52x45x25mm | |



| Part No. | Material | Finish | Size | Glass thickness |
|----------|------------|----------|--------------|-----------------|
| • G107 | • AISI 304 | • Satin | • 63x45x28mm | • 10mm |
| • G107R | • AISI 316 | • Mirror | • 66x45x28mm | |



| Part No. | Material | Finish | Size | Glass thickness |
|----------|------------|----------|--------------|-----------------|
| • G108 | • AISI 304 | • Satin | • 56x55x25mm | • 10-12mm |
| • G108R | • AISI 316 | • Mirror | • 58x55x25mm | |



| Part No. | Material | Finish | Size | Glass thickness |
|----------|------------|----------|------------|-----------------|
| • BC-60 | • AISI 304 | • Satin | • Dia 60mm | • 8-12mm |
| | • AISI 316 | • Mirror | | |



| Part No. | Material | Finish | Size | Glass thickness |
|------------|------------|----------|-----------|-----------------|
| • BC-60x35 | • AISI 304 | • Satin | • 80x35mm | • 8-12mm |
| | • AISI 316 | • Mirror | | |



| Part No. | Material | Finish | Size | Glass thickness |
|----------|------------|----------|-----------------|-----------------|
| • CB-180 | • AISI 304 | • Satin | • glass to wall | • 8-12mm |
| | • AISI 316 | • Mirror | | |



| Part No. | Material | Finish | Size | Glass thickness |
|----------|------------|----------|--------------|-----------------|
| • CB-60 | • AISI 304 | • Satin | • 52x52x25mm | • 8-12mm |
| | • AISI 316 | • Mirror | | |



| Part No. | Material | Finish | Size | Glass thickness |
|----------|------------|----------|-------------|-----------------|
| • PV-90 | • AISI 304 | • Satin | • 50x51.3mm | • 8-12mm |
| | • AISI 316 | • Mirror | | |



| Part No. | Material | Finish | Size | Glass thickness |
|----------|------------|----------|-----------|-----------------|
| • PV-180 | • AISI 304 | • Satin | • 60x25mm | • 10-12mm |
| | • AISI 316 | • Mirror | | |

We have different types of glass clamps that work for 6mm to 13.52mm thickness glass . For different models , glass clamps are of different sizes .

If you need to get price quote , feel free to contact us .

Shenzhen Launch Co., Ltd

Verified by SGS , Report No. 19536352_P+T

Office add:

B5-003, 5/F-Block 3, Yilida Building, No. 1092 Nanshan Road, Nanshan District, Shenzhen , China , postal code 518054

Tel: 86-755-86037559 Fax:86-755-86372611

MOB (WhatsApp, Wechat, Viber) +86 135 9027 3543

Factory add :

1st floor , Building A , Ruixin Hengye No.3 industrial area, Taixing Road, Shigu Town, Tangxia district , Dongguan

Email . sales01@launch-china.cn