

## AS1926:1993 Core drilled in ground glass spigot for pool fence

Material: Stainless steel 316/316L/Duplex 2205

Finish: Satin brushed or mirror polished

For glass thickness:10-13.52mm

Height: 285mm;

Shape: round/square

Feature: No drilled on glass;

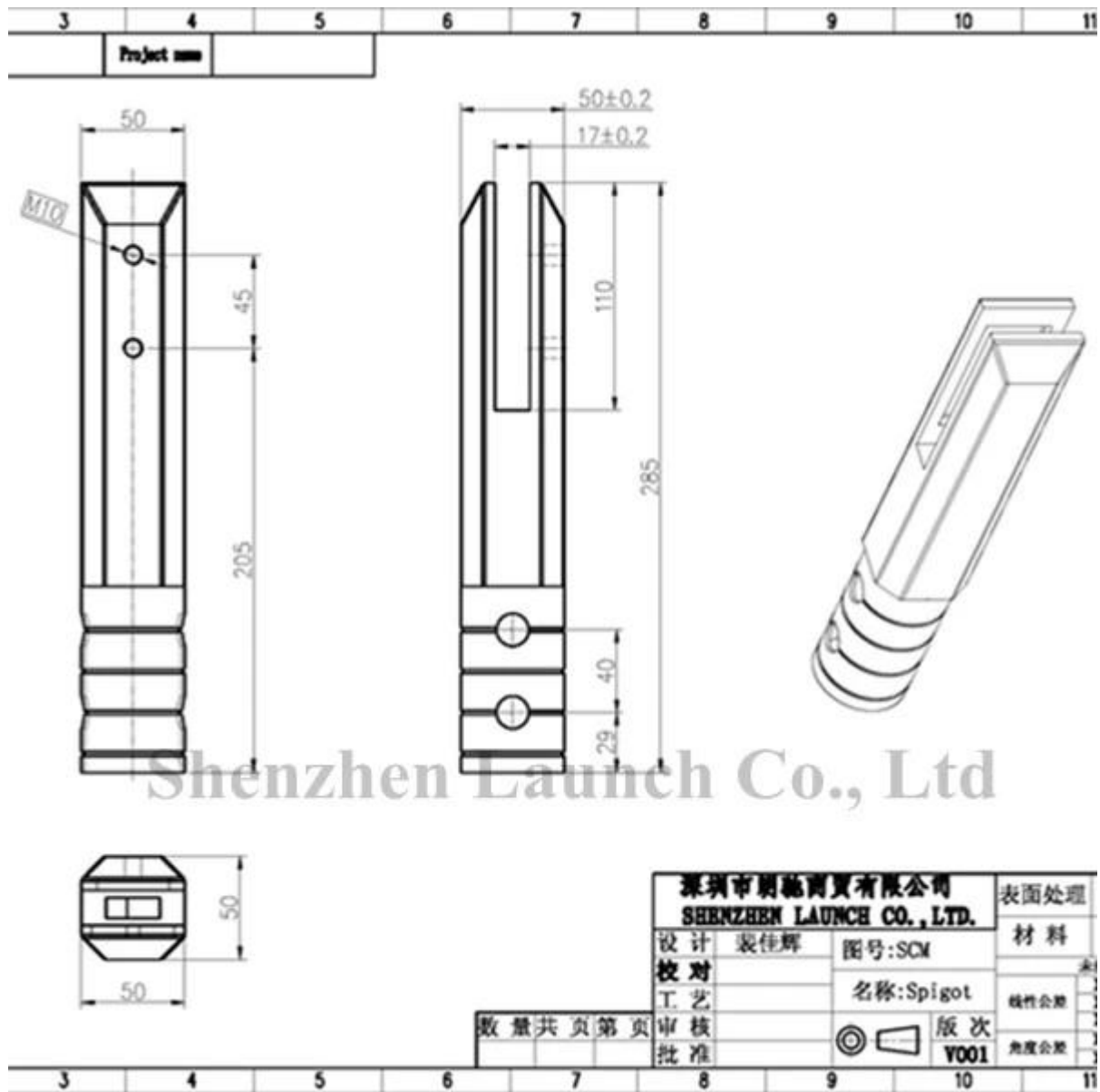
Origin: Shenzhen



Square shape **SCM-2**



**Size drawing of SCM-2**  
50x50mm



## Round shape RCM-2

Diameter 50mm





Project in Australia





Core drilled glass spigot are widely used at outdoor swimming pool fence, balcony/deck frameless glass railing.

Holding glasses very stable(no drilled on glass) and no block of view.

As for glass fence door, we do have glass door hinge and latch available, please see the hardware picture as below.



