

# AU & NZ standard building 25 x 21mm Slotted Stainless Steel tube handrail

## 1.25 x 21mm Slotted Stainless Steel tube handrail description ,

Where would you normally use a slotted stainless steel tube ?  
For handrail as part of a stainless steel glass balustrade.

What is it made out of ?  
316L Stainless Steel in a Mirror or Brushed Finish.

What are the important dimensions ?  
25mm wide x 20mm tall with a 1.2mm wall thickness. The slot is 14x14mm.

Note: Our modle, is 20mm tall, the other dimensions are same as the 25 x 21mm type.

What fittings for the handrail ?

180 degree connector, 90 degree connector, wall to rail connector bracket, end cap

### **20\*25mm slot handrail**

**5.8 m per length**



180 degree joiner



90 degree joiner



Vertical adjustable joiner



Horizontal I adjustable joiner



Wall to handrail joiner



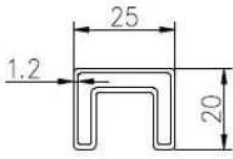
End cap



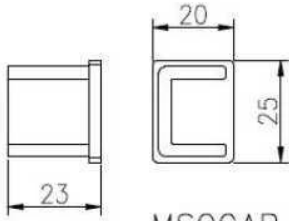
## 2.25 x 21mm Slotted Stainless Steel tube handrail & fittings

project photos ,

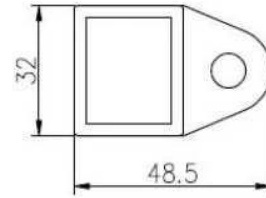
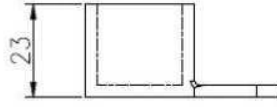
Slot tube handrail + end cap + wall bracket connector drawings



25\*20 tube



MSQCAP



MSQCW



90 degree Corner connector



180 degree middle connector



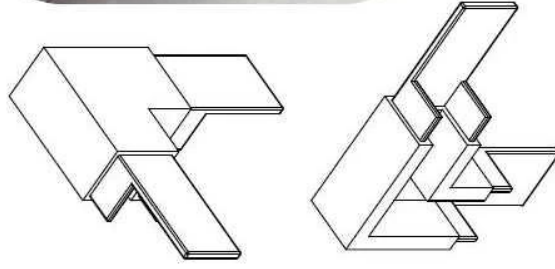
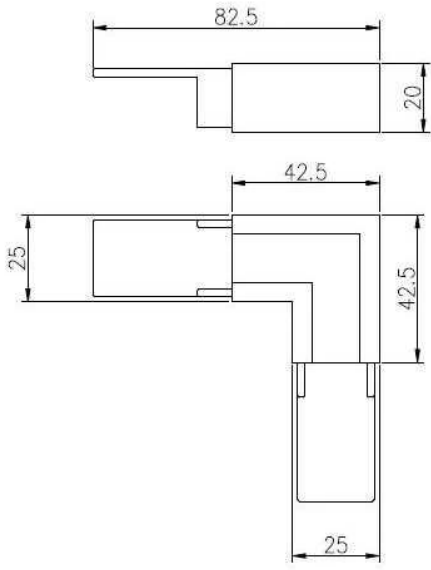
End Cap



Wall Bracket



90 degree connector drawings



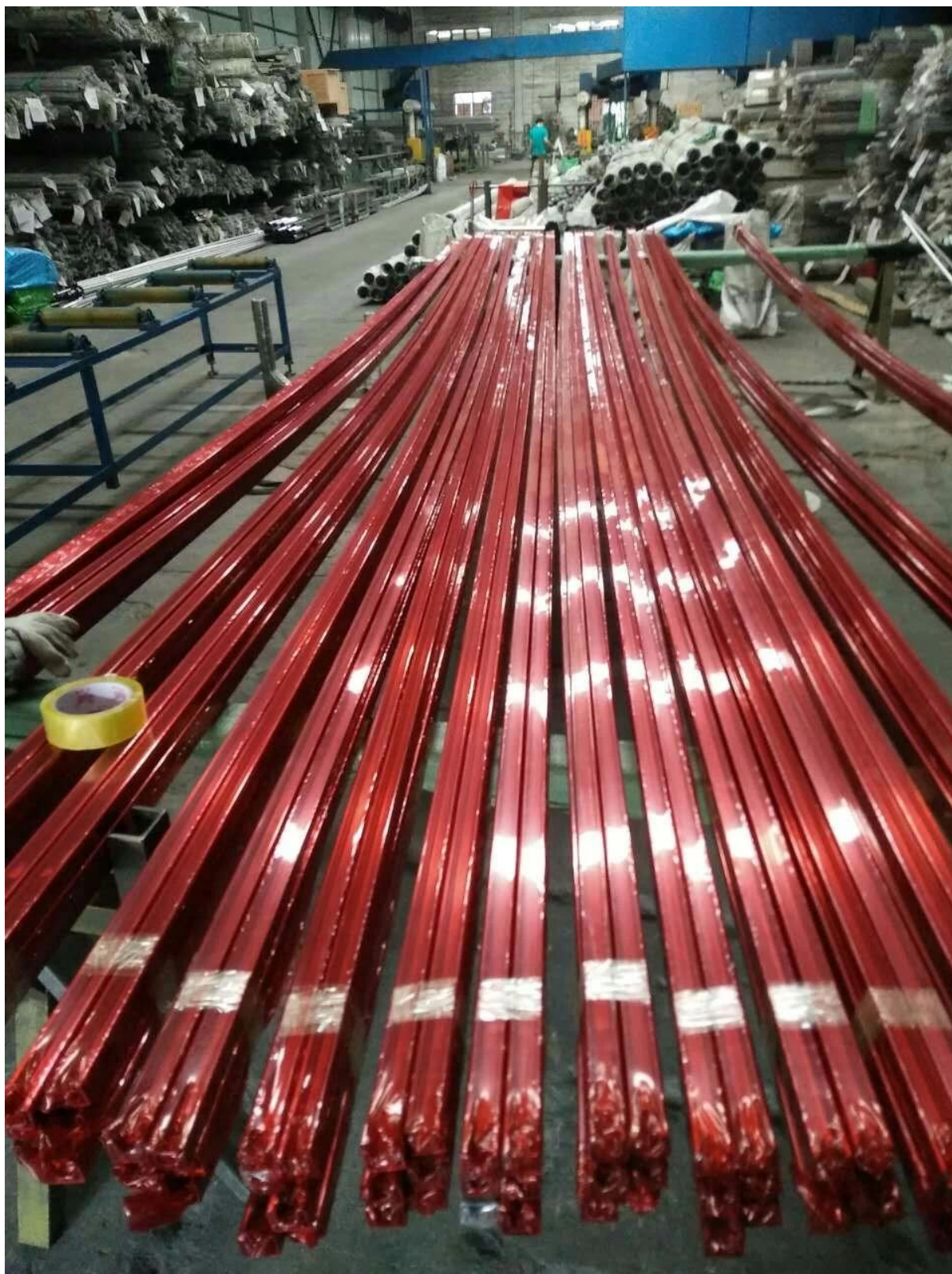
MSQC90







3. 25 x 21mm Slotted Stainless Steel tube handrail safety package □









Thanks for your visit, Any interested, please contact with me freely :

Email: [sales02@launch-china.cn](mailto:sales02@launch-china.cn) . Skype: [launch-02](https://www.skype.com/name/launch-02) .